

Reed College ILL



ILLiad TN: 23356

Borrower: GDC

Lending String: *ORC,XLM,BBH,WLU,ZQM

Patron: Amith, Jonathan

Journal Title: Contributions to anthropology;
linguistics I (Algonquian).

Volume: 214 **Issue:**
Month/Year: 1967**Pages:** 13-47

Article Author: Conference on Algonquian
Linguistics (1964 ; Ottawa)

Article Title: Siebert, F. T.; The original home of
the Proto-Algonquian people

Imprint: Ottawa [National Museum of Canada]
1967.

ILL Number: 48877983



Call #: PM601 .C6

Location: Stacks AVAILABLE

ARIEL
ODYSSEY ENABLED

Charge
Maxcost: \$25IFM

Shipping Address:
300 N. Washington St.
Interlibrary Loan
Gettysburg College Library
Gettysburg, PA 17325-1493

Fax:
Ariel:
Odyssey: 206.107.42.97

dy cited.

THE ORIGINAL HOME OF THE PROTO-ALGONQUIAN PEOPLE

BY FRANK T. SIEBERT, JR.

The conviction exists that the study of American Indian languages has contributed little information to advance our knowledge of prehistory beyond linguistic classification into stocks. This impression is not without justification, since the archaeologist and ethnohistorian desire more elaborate information and look to linguistics as a science for substantial contributions that go further than mere classification. Glottochronology and the lexicostatistical analysis of individual language stocks represent a notable effort in this direction, but the underlying assumptions of this type of study are subject to some serious objections. A uniform retention rate of basic vocabulary in terms of time throughout language groups of dissimilar structure may be false, and there are interfering biological, demographical, and cultural variables.

does not reflect his present views on

The technique of using natural history terms that can be reconstructed in a proto-language in an attempt to locate the original home or 'Urheimat' of a stock is not new. It has been applied to Indo-European with limited success, but it has not been tried on any scale with regard to American languages. The present study is directed at determining the home of the original Algonquian people before their general dispersion approximately three thousand years ago. To the archaeologists and other students of prehistory this is of major interest. The Algonquian stock is the largest, comprising about thirty-four living and extinct languages, and geographically the most widely distributed in North America, extending from Labrador to California and from Hudson Bay to Georgia, except for some interrupting enclaves of other stocks.

Course; Arapaho from Salzmann,

ewhere in this volume), Appendix

es this word as 'tube, gun, whistle,'

ary, p. 83.

The method of using natural history terms in this type of study involves a number of difficulties which may lead to error. The original distributions of individual species before the disturbing forces of civilization altered them must be determined. Forests have been destroyed, dams built, and streams polluted. The numbers and ranges of some species have been reduced by persistent hunting and fishing. Many kinds of fish have been introduced deliberately or by accident into lakes and streams where they were not native. Slow climatic changes have made alterations in the ranges of some species, such as the more northern and eastern extensions of the moose in the Labrador Peninsula and a corresponding advance northward in Ontario,¹ even since the arrival of the Europeans. A large number of sources have been consulted in preparing the accompanying maps which attempt to portray the approximate original ranges of the various species with which I shall deal. In some instances my own observations have aided. It is to be hoped, therefore, that these maps are reasonably accurate.

For convenience, the linguistic terms for the fauna and flora will be treated separately in the following groups: birds, mammals, fish, and trees. Only the species having linguistic terms that can be reconstructed as Proto-Algonquian and that have cognates in both the geographically determined eastern and

central Algonquian languages will be considered. In the past, Algonquianists, with the exception of James H. Trumbull in the nineteenth century, have been quite remiss about making accurate species identifications for linguistic terms dealing with natural history. Semantic changes are not unusual, especially following the migration of a speech community, for in such cases an old linguistic term is often applied to a similar but different species not previously known to the speakers of the language.

For obvious reasons, ornithological terms are of the least value to this inquiry. Most birds migrate seasonally, often being driven by storms or the quest for food to localities in which they are only incidental. Furthermore, most species of birds given here have an extensive geographical range. On the other hand, trees are fixed, and their range is governed by climate, soil, and moisture. Although there has been some warming and amelioration of the climate in the Northern Hemisphere in this century, there is reason to believe that the distributions of arboreal species have remained essentially constant during the past millennium. Fish are also limited to their environment of the streams and lakes in which they are native. Therefore, the terms for fish and trees have greater merit in this study.

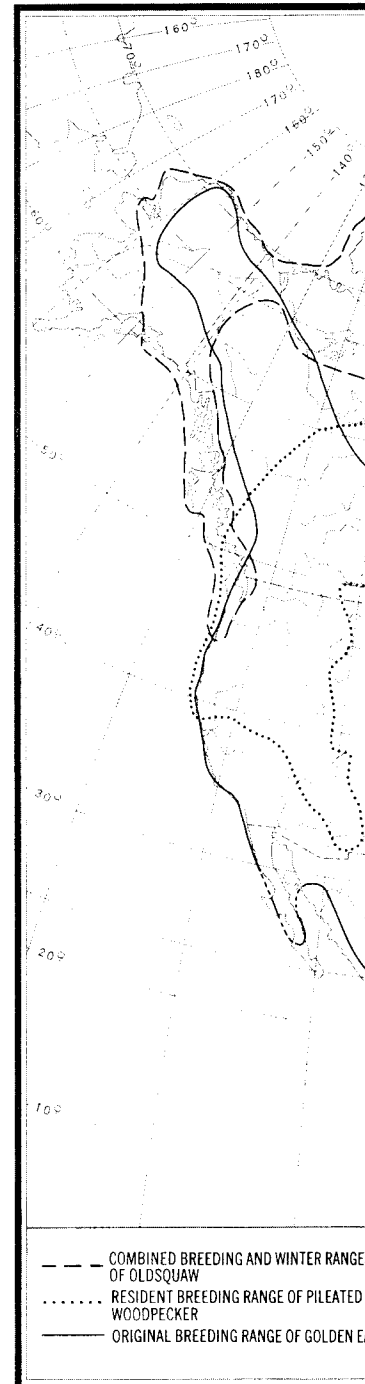
Lexical citations² in Fox,³ the Munsee dialect of Delaware,⁴ the Lake St. John dialect of Montagnais,⁵ and Penobscot⁶ are from my own field notes. Menomini forms are from Bloomfield,⁷ and Ojibwa forms are from Bloomfield⁸ and Baraga.⁹ Cree terms are from Bloomfield,¹⁰ Lacombe,¹¹ and Watkins.¹² The Shawnee and Miami forms are from Voegelin,¹³ and Massachusetts forms are from the John Eliot Indian Bible, Cambridge, 1663, with suitable passage citation. Abenaki forms are from Day¹⁴ and a few notes I collected many years ago. My Proto-Algonquian reconstructions employ the principles established by Bloomfield.¹⁵ When meaning differences between various languages occur, the apparent original significance is given and the sign # follows to indicate that some semantic changes have taken place.

An additional word is required concerning the accompanying maps. No attempt has been made to illustrate the ranges of widespread species, such as the Kingfisher and the Nighthawk. With regard to all species, uncommon occurrences outside the main distribution are not usually recorded.

EVIDENCE OF BIRD NAMES

1. PA **keliwa* 'Golden Eagle' (*Aquila chrysaetos canadensis* Linnaeus), based on M *kene·w*, C *kiyiw*, O *kiniw*, P *kàlo*. On the other hand, Fox and Miami agree in having a discrepant set, with F *ketiwa*, MI *kintiwa* (also MI *kintiwe·nsa* 'golden eaglet,' with dimin. noun final *-e·ns-a*), which posit **kentiwa*, which is somehow related to **keliwa*. Perhaps these were an original PA doublet. This species was always uncommon in the east, being confined chiefly to isolated mountainous districts. The original distribution as nearly as it can be determined is given in Map 1. Different terms exist in most languages for the Bald Eagle.

2. PA **me·me·wa* 'Pileated Woodpecker' or 'logcock' (*Dryocopus pileatus* Linnaeus). F *me·me·wa*, M *mε·mε·w*, MSj *me·me·w*, O *me·me·*, Dm *mé·me·w*, P *mème* (pl. *mèmak*). This crow-sized shy bird of the deep woods continues to retreat before civilization. Its distribution is given on Map 1.



In the past, Algonquianists, nineteenth century, have been modifications for linguistic terms are not unusual, especially, for in such cases an old different species not previously

of the least value to this being driven by storms or the only incidental. Furthermore, give geographical range. On is governed by climate, soil, and amelioration of the, there is reason to believe remained essentially constant to their environment of the before, the terms for fish and

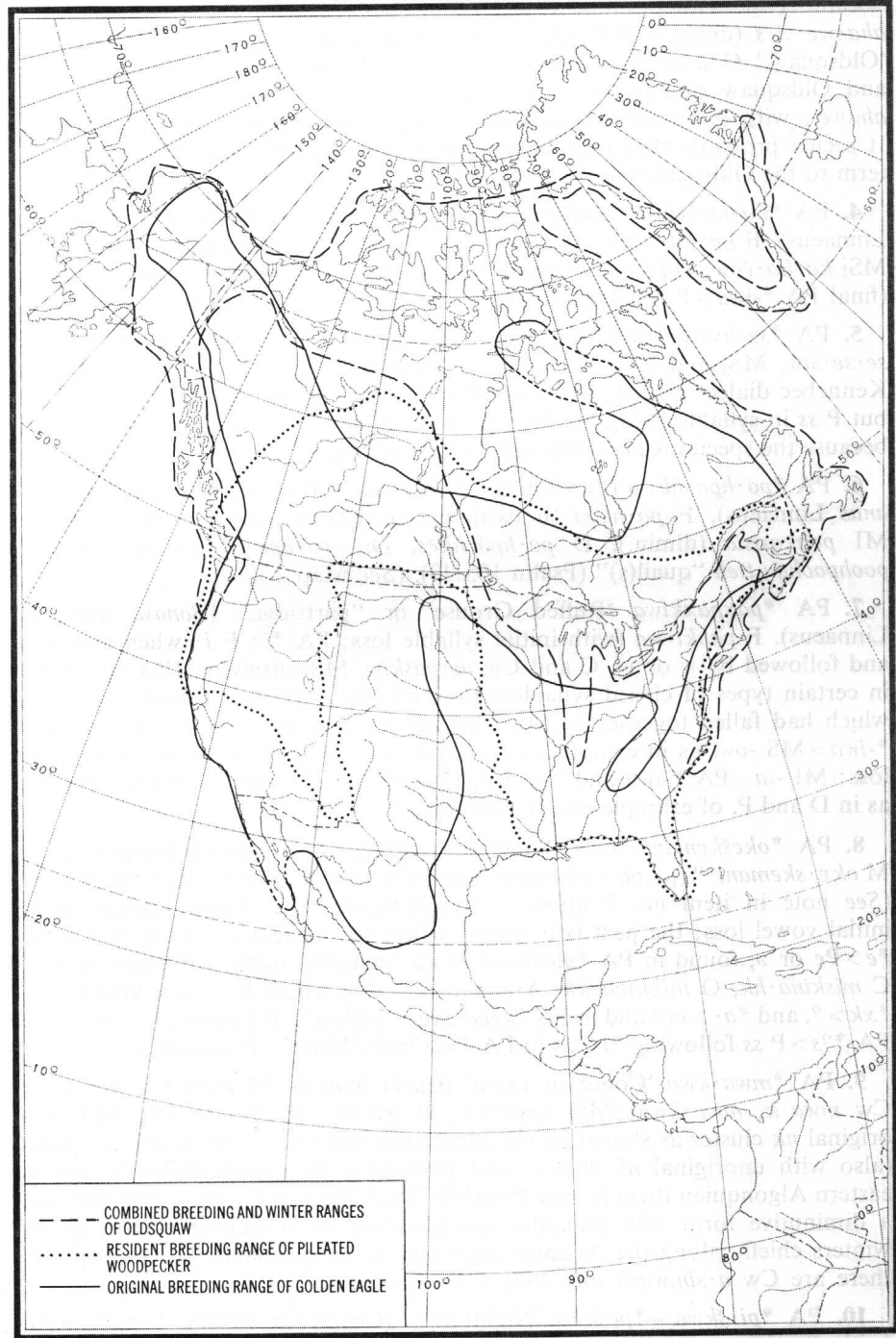
of Delaware,⁴ the Lake St. from my own field notes. forms are from Bloomfield⁸ Lacombe,¹¹ and Watkins.¹² ¹³ and Massachusetts forms 1663, with suitable passage few notes I collected many ens employ the principles differences between various ce is given and the sign # ve taken place.

the accompanying maps. No widespread species, such as to all species, uncommon usually recorded.

IES
ëtos canadensis Linnaeus), on the other hand, Fox and *etiwa*, MI *kintiwa* (also MI *ns-a*), which posit **kentiwa*, these were an original PA east, being confined chiefly tribution as nearly as it can exist in most languages

ogcock' (*Dryocopus pileatus* w, O me·me·, Dm mé·me· w, of the deep woods continues n on Map 1.

MAP No 1



3. PA *aʔa·we·wa ‘Oldsquaw’ (*Clangula hyemalis* Linnaeus). M aʔa·wε·w “brant” (with either semantic change or faulty species identification¹⁶), Cw aha·we·si·s (dimin.), MSj aha·we·ši·š ‘Oldsquaw’ (dimin.), MSs aha·we·w ‘Oldsquaw,’ O aʔa·we· “pigeon-tail duck” (Baraga, p. 3. Only the Pintail and Oldsquaw qualify for this description.), P aha·wehso ‘Oldsquaw’ (root aha·we-, with quasi-diminutive -əhs- ‘living creature,’ and animate final -o). It seems probable that most languages except perhaps Menomini refer this term to the Oldsquaw (see Map 1).

4. PA *ka·ka·kiwa ‘Common Raven’ or ‘Northern Raven’ (*Corvus corax* Linnaeus). F ka·ka·kiwa; M ka·ka·kew; C and Cw ka·ka·kiwa, ka·ka·kiw; MSj ka·ka·čow; O ka·ka·ki (final *-wa after *i is always lost in O); P kákəkə (final PA *-iwa > P -o). (See Map 2.)

5. PA *se·hse·hsiwa (?), ‘Greater Yellowlegs’ (*Totanus melonaleucus*). Cw se·se·siw, MSj and MSs še·še·šow, A sasasso, P *sésesso (based on Rasles’ Kennebec dialect séséss8, unglossed bird name; PA *hs > P s in word medial, but P ss in syllable final). Modern Penobscots do not know the term, perhaps because the species is now very rare in central Maine.

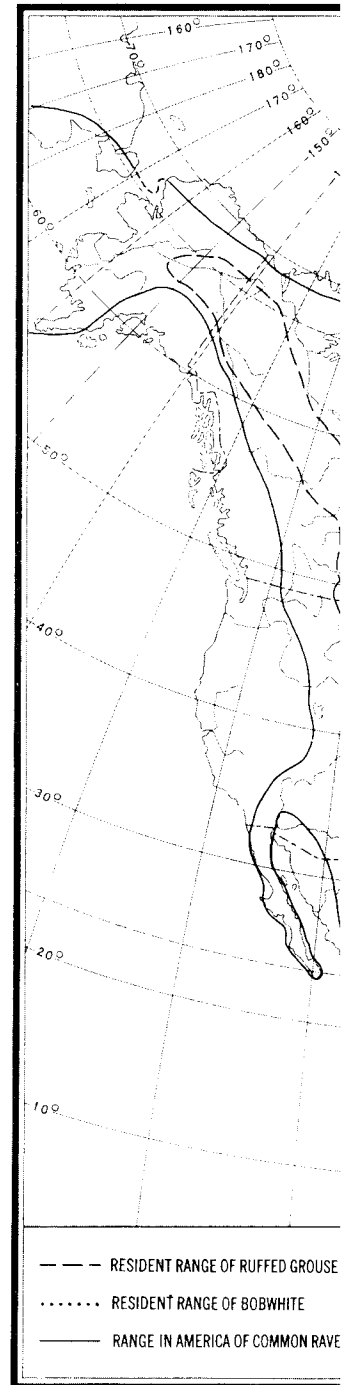
6. PA *po·hpo·hkwa (?), ‘Bobwhite’ or “quail” (*Colinus virginianus virginianus* Linnaeus). F po·hkwi·ha (with initial syllable loss, and dimin. -i·h-), MI pohkosisia (dimin.), D po·hpó·hkəs, Dm po·hpó·hkwi·s (dimin.), N poohpoohqu-tteh “quail(s)” (Psalm 105:40). (See Map 2.)

7. PA *paxpaxkiwa ‘Ruffed Grouse’ or “partridge” (*Bonasa umbellus* Linnaeus). F pahki·wa (with initial syllable loss; PA *i > F i· when accented and followed by w or y), C and Cw paspaskiw, MSj pispisčow (PA *a > MS i in certain types of closed syllables; PA *k > MS č before original *i and *e, which had fallen together to MS i before the consonant shift occurred; PA *-iwa > MS -ow, as in examples no. 4 and 5), MI pahkia (with initial syllable loss; MI -ia < PA *-iwa and *-e·wa), Dm pahpáhko (final PA *-iwa > Dm -o, as in D and P, of example no. 4). (See Map 2.)

8. PA *okeškemani·ʔsiwa ‘Kingfisher’ (*Megaceryle alcyon*). Supported by M okε·skemani·ʔ (pl. okε·skemani·ʔsak), Cw okiskimanišiw, MSj očisčiminšow (See note in item no. 7 above), O okiškimani·ssi, P kaskamánəssə (with initial vowel loss; the next two vowels reflect the ancient variation of PA *a *e > Pe or ə, found in PA *mexkena·hkwa ‘snapping turtle’ > P ámihkənahk”, C miskina·hk, O mikkina·kk, Arapaho beʔénoo, where PA *m > Arapaho b, *xk > ʔ, and *a· > oo; and in PA *keno·šye·- ‘willow’ > P kanose-, M kenu·si·-; PA *ʔs > P ss following *i·, as in PA *wi·ʔsak- ‘bitter’ > P wəssak-).

9. PA *mwa·kwa ‘Common Loon’ (*Gavia immer*). M muak; C ma·kwa; Cw mwa·k, mwa·kwa; MSj mwa·kw; O ma·nk (pl. ma·nkwak; with unoriginal nk cluster as shown by the Menomini and Cree forms); MI ma·nkwa (also with unoriginal nk cluster, and perhaps a loan from Ojibwa); but in eastern Algonquian there is only P mək”is ‘Red-throated Loon’ (*Gavia stellata*), a diminutive form with semantic specialization for a smaller species which winters chiefly along the Atlantic coast and is scarce inland. For this species there are Cw a·simwa·k and MSj a·šimwa·kw.

10. PA *pi·škwa ~ *peškwa ‘Nighthawk’ (*Chordeiles minor*). F peškwe·ha (with dimin. -e·h-), M pe·skiʔ “mosquito hawk” (dimin. -iʔ, -iʔs-), C pi·škwa,



alis Linnaeus). M *aʔa·wε·w*
 species identification¹⁶), Cw
 w' (dimin.), MSs *aha·we·w*
 raga, p. 3. Only the Pintail
ahawehso 'Oldsquaw' (root
 ure,' and animate final -o).
 perhaps Menomini refer this

'Northern Raven' (*Corvus corax*
 Cw *ka·ka·kiwa, ka·ka·kiw;*
 s always lost in O); P *kákako*

(*Totanus melonaleucus*). Cw
 *sésesso (based on Rasles'
 PA *hs>P s in word medial,
 not know the term, perhaps
 ine.

(*Colinus virginianus virgini-*
 able loss, and dimin. -i·h-),
 po·hpó·hkwi·s (dimin.), N
 Map 2.)

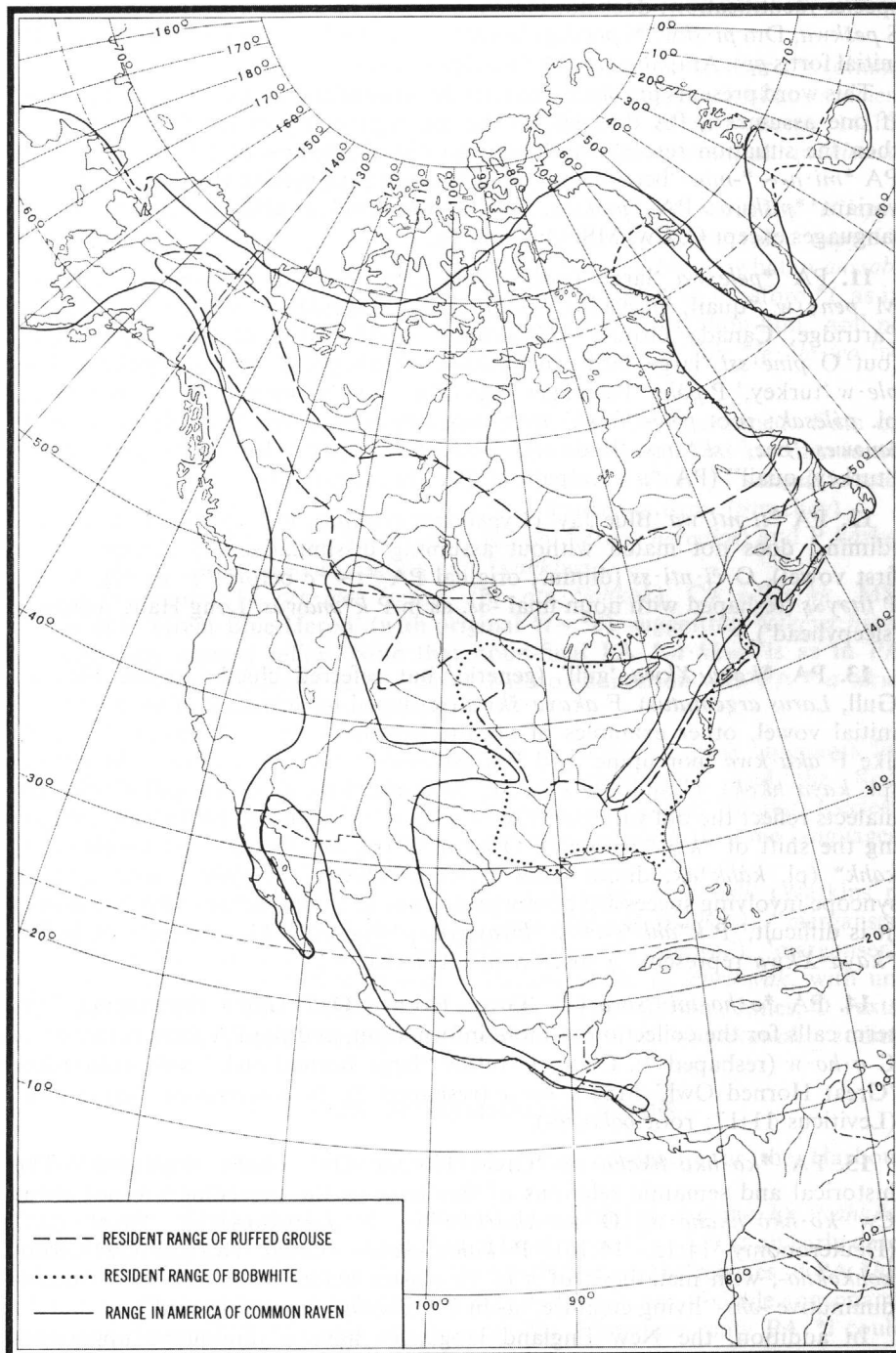
'partridge' (*Bonasa umbellus*
 PA *i>F i· when accented
 MSj *pispisčow* (PA *a>MS i
 č before original *i and *e,
 consonant shift occurred; PA
 pahkia (with initial syllable
 ko (final PA *-iwa>Dm -o,

eryle alcyon). Supported by
kimanisiw, MSj *očiscimínšow*
 ssi, P *kaskamánəssō* (with
 ancient variation of PA *a
 'wing turtle'>P *ámihkənahk*™,
 where PA *m>Arapaho b,
 w'>P *kanose-*, M *kenu·si·-*;
 'bitter'>P *wəssak-*).

'Loon' (*Gavia stellata*),
 for a smaller species which
 'Loon'>P *wəssak-*).

(*deiles minor*). F *peškwe·ha*
 dimin. -iʔ, -iʔs-), C *pi·skwa,*

MAP No 2



Cw *pi·sk*, MSj *pi·škw*, O *pe·škwe* ‘a kind of owl’ (Baraga p. 350, with faulty species identification; does not match, and may be a reshaped loan from Fox), S *peškwa*, Dm *pi·škw*, N *peeskq* (Deuteronomy 14:15), P *ppask* (reshaped with initial fortis *pp*), Arapaho *čís* (PA **p* > Arapaho *č*).

This word presents problems, perhaps because of reshaping in some languages. If one assumes a PA doublet, as the incompatibility of the forms suggests, then the situation resolves itself into an old alternation of PA **i* ~ **i* (as in PA **mi·n* ~ **-min* ‘berry’) and, since **i* is not permitted in PA initial syllables, variant **piškwa* > PA **peškwa*. This short vowel doublet is reflected in all languages except C, Cw, MS, Dm, and N.

11. PA **pele·wa* ‘large fowl, edible game bird.’ ≠ F *pene·wa* ‘turkey,’ M *penε·w* ‘quail, partridge,’ C *piye·w* ‘partridge,’ MSj *pile·w* ‘Spruce Partridge, Canada Grouse’ (*Canachites canadensis*),¹⁷ O *pine* ‘partridge’ (but O *pine·ssi* ‘large bird’ and *misisse* ‘turkey’), S *peleewa* ‘turkey,’ Dm *ple·w* ‘turkey,’ P *pàles* ‘Passenger Pigeon’ (*Ectopistes migratorius*, now extinct; pl. *pàlesak*; root *pàle* ‘fowl,’ with quasi-diminutive *-es* ‘little flyer,’ as in P *àmawes* ‘bee,’ *sk^wàtes* ‘Redstart,’ *mk^wiptes* ‘autumn leaf’), Arapaho *čénee* ‘turkey, quail’ (PA **p* > Arapaho *č*, PA **l* > Arapaho *n*).

12. PA **ti·nti·wa* ‘Blue Jay’ (*Cyanocitta cristata*). F *ti·ti·wa*, Cw *te·hti·siw* (dimin.; does not match without assuming dissimilative (?) change of the first vowel), O *či·nti·ss* (dimin.; original PA **t* ~ **č* before **i* or **i*), S *tiiti*, P *títayās* (reshaped with noun final *-ās*, as in P *k^wánawās* ‘Long Hair,’ *kàwəyās* ‘sleepyhead’).

13. PA **kaya·Xkwa* ‘gull’ (generic, but referred chiefly to the Herring Gull, *Larus argentatus*). F *akaya·škw* (reshaped by accretion of an unoriginal initial vowel, other examples of vocalic prosthesis being found in F and P, like F *aka·kwa* ‘porcupine’ and P *ámihkənahk^w* ‘snapping turtle’), M *kaya·h* (pl. *kaya·hkok*), C and Cw *kiya·sk*, MSj and MSs *čiya·škw* (all C and MS dialects reflect the old variation PA **a* ~ **e* as **e* > *i*, in MS historically preceding the shift of **k* > *č* before *i*), O *kaya·šk* (pl. *kaya·škok*), MI *kiyahkwa*, P *kahk^w* (pl. *kàhk^wak*, dimin. *kàhk^wis*; < pre-Abenaki **kàyahk^w*, with syllabic syncope involving successive homorganic vowels, as in P *sàkat* < PA **salakatwi* ‘it is difficult,’ P *k^wàhk^wi* < PA **kwayaxkwi* ‘straight’). The cluster **Xk* in PA **kaya·Xkwa* represents a discrepant cluster in **-k*.

14. PA **o·ho·mi·?siwa* (?), ‘Great Horned Owl’ (*Bubo virginianus*). This term calls for the collection of more information, and the PA form is tentative. C *o·ho·w* (reshaped ?), Cw *o·ho·misiw* ‘large horned owl,’ MSj *o·ho·mšow* ‘Great Horned Owl,’ MSs *o·ho·w* (reshaped ?), N *oohoomoen* ‘great owl’ (Leviticus 11:17; root *oohoom*-).

15. PA **ko·hko·hkaho·wa* ‘Great Horned Owl’ (*Bubo virginianus*). The historical and semantic relations of this term to the preceding are not clear. Cw *ko·hko·hkaho·w*, O *ko·kko·kka^o*, N *koohkookhaus* ‘great owl’ (Deuteronomy 14:15, 14:16), P *kohkókhahso* ‘Great Horned Owl’ (root *kohkokha-*, with metathesis of *h* in *hk* cluster before *a*, as also in N; quasi-diminutive *-əhs-* ‘living creature,’ as in P *anéhtahso* ‘humming-bird’).

In addition, the New England languages have a diminutive apparently used for the ‘Long-eared Owl’ (*Asio otus wilsonianus*), N *koohkookhes* ‘owl’

(Leviticus 11:16), P *kóhko* ‘little flyer,’ in item no 11). *kóhko·s* ‘Great Horned Owl’

16. PA **awe·?le·wa* ‘hawk’ (dimin. *awéhle·šo·š* ‘bird’) with pl. *-og*), P *áwehle* ‘hawk’ with quasi-diminutive *-es*, a PA **l* > P *hl*, M *?n*, C *hy* ‘net’ > P *-hlapi-* ‘net, web’ (a C *ahyapiy*, O *assap*, N *hash*), PA **nene^ola·wa* ‘I kill him’ PA **ne^oši* ‘kill thou him’ > ‘kill thou me’). On the other breathes’ > P *nəhse*.

17. PA **sa·?sake·wa* (?). This term are too scanty to only to point out a correspondence (Isaiah 38:14; PA **k* > N *t*).

Unrelated are Dm *káxko* suggesting an earlier eastern form. There are also M *ote·č* *očiča·hkw* ‘Great Blue Heron’ without any eastern reflex. **mexkena·hkwa* ‘snapping wood; hardwood or deciduous’.

18. PA **wesehkwa* ~ **asu* the American Merganser, breasted Merganser, *M. serrator*. PA either had a doublet or Data are insufficient to draw conclusions. M *ose·h* ‘sawbill duck’ 64, 119, 392; these variants ‘saw-bill duck, fish duck’; O *ansik* ‘saw-bill, kind of original *ns* cluster), and O *č* II:60–62); P *wasihkawe* (reshaped).

EVIDENCE

19. PA **a·skikwa* ‘seal’ Seal, *Phoca vitulina concolor*. Cw *a·hkik*, MSj *a·hčok* (pl. *áhkik^wak*). Although PA P shows that the original vowel was **l*, **xk*, **sk*, and **ht*, but the clusters PA **θk*, ‘be correct (See Map 3).

" (Baraga p. 350, with faulty
a reshaped loan from Fox),
15), P *ppask*^w (reshaped with

reshaping in some languages.
ibility of the forms suggests,
nation of PA *i ~ *i (as in
mitted in PA initial syllables,
l doublet is reflected in all

rd.' ≠ F *pene·wa* 'turkey,'
idge," MSj *pile·w* 'Spruce
sis),¹⁷ O *pine·* "partridge"
''), S *peleewa* 'turkey,' Dm
tes migratorius, now extinct;
ive -es 'little flyer,' as in P
umn leaf"), Arapaho *énee*
ahon).

a). F *ti·ti·wa*, Cw *te·hti·siw*
imilative (?) change of the
*č before *i· or *i), S *tiiti*,
inawas 'Long Hair,' *kawayas*

red chiefly to the Herring
y accretion of an unoriginal
is being found in F and P,
snapping turtle'), M *kaya·h*
Ss *čiya·škw* (all C and MS
i, in MS historically preced-
aya·škok), MI *kiyahkwa*, P
ki **kayahk*^w, with syllabic
s in P *sakat* < PA **salakatwi*
ht'). The cluster *Xk in PA
-k.

wl' (*Bubo virginianus*). This
and the PA form is tentative.
orned owl," MSj *o·ho·mšow*
N *oohoomoen* "great owl"

wl' (*Bubo virginianus*). The
the preceding are not clear.
koohkookhaus "great owl"
'Great Horned Owl' (root
fore a, as also in N; quasi-
'humming-bird').

ve a diminutive apparently
nus), N *koohkookhes* "owl"

(Leviticus 11:16), P *kóhkokhes* 'Long-eared Owl' (with quasi-diminutive -es
'little flyer,' in item no 11). A reshaped and contracted form is found in Dm
kókho·s 'Great Horned Owl.'

16. PA **awe·ʔle·wa* 'hawk of any species.' MI *awe·hse·nsa* 'bird'¹⁸ (dimin.
-e·ns- as in example no. 1; root *awe·hse·-*), Dm *awéhle·w* 'hawk of any species'
(dimin. *awéhle·šo·š* 'bird'), N *owóhshaog* "hawk(s)" (Deuteronomy 14:15,
with pl. -og), P *áwehle* 'hawk of any species' (or dimin. *áwehles*, pl. *awéhlesak*,
with quasi-diminutive -es, as in items no. 11 and 15).

PA *ʔl > P hl, M ʔn, C hy, O ss, MI hs, N hs, Powhatan ss, as in PA **aʔlapyá*
'net' > P *-hlapi·* 'net, web' (as in P *amoslápihke* 'spider'), M *aʔnap* (pl. *aʔnapyak*),
C *ahyapiy*, O *assap*, N *hashabp* (Ecclesiastes 9:12, Job 8:14), Powhatan *aussab*;
PA **neneʔla·wa* 'I kill him' > P *nánihlα* (with immutable l in P before *i, as in
PA **neʔši* 'kill thou him' > F *neši*, M *neʔsin*, but P *nle* 'kill thou him,' and *nli*
'kill thou me'). On the other hand, PA **hl* > P hs, as in PA **le·hle·wa* 'he
breathes' > P *nèhse*.

17. PA **sa·ʔsake·wa* (?) 'heron, crane,' species not determined. Data on
this term are too scanty to ascertain a definite archetype, and are mentioned
only to point out a correspondence. M *sa·ʔsakew* 'heron,' N *sassadt* 'crane'
(Isaiah 38:14; PA **k* > N t before *i and *e·), Powhatan *ussac* (Strachey).

Unrelated are Dm *káxko* 'Great Blue Heron' (*Ardea herodias*) and P *kàsko*,
suggesting an earlier eastern Algonquian **kaθkiwa*.

There are also M *ote·čiah* 'crane' (pl. *ote·čiahkok*), Cw *očiča·hk*, MSj
očiča·hkwa 'Great Blue Heron' (with original *t ~ *č), suggesting **otečya·hkwa*
without any eastern reflex. Note that noun-final PA **a·hkwa* is as in PA
**mexkena·hkwa* 'snapping turtle,' which has no connection with PA **a·xkw·*
'wood; hardwood or deciduous tree.'

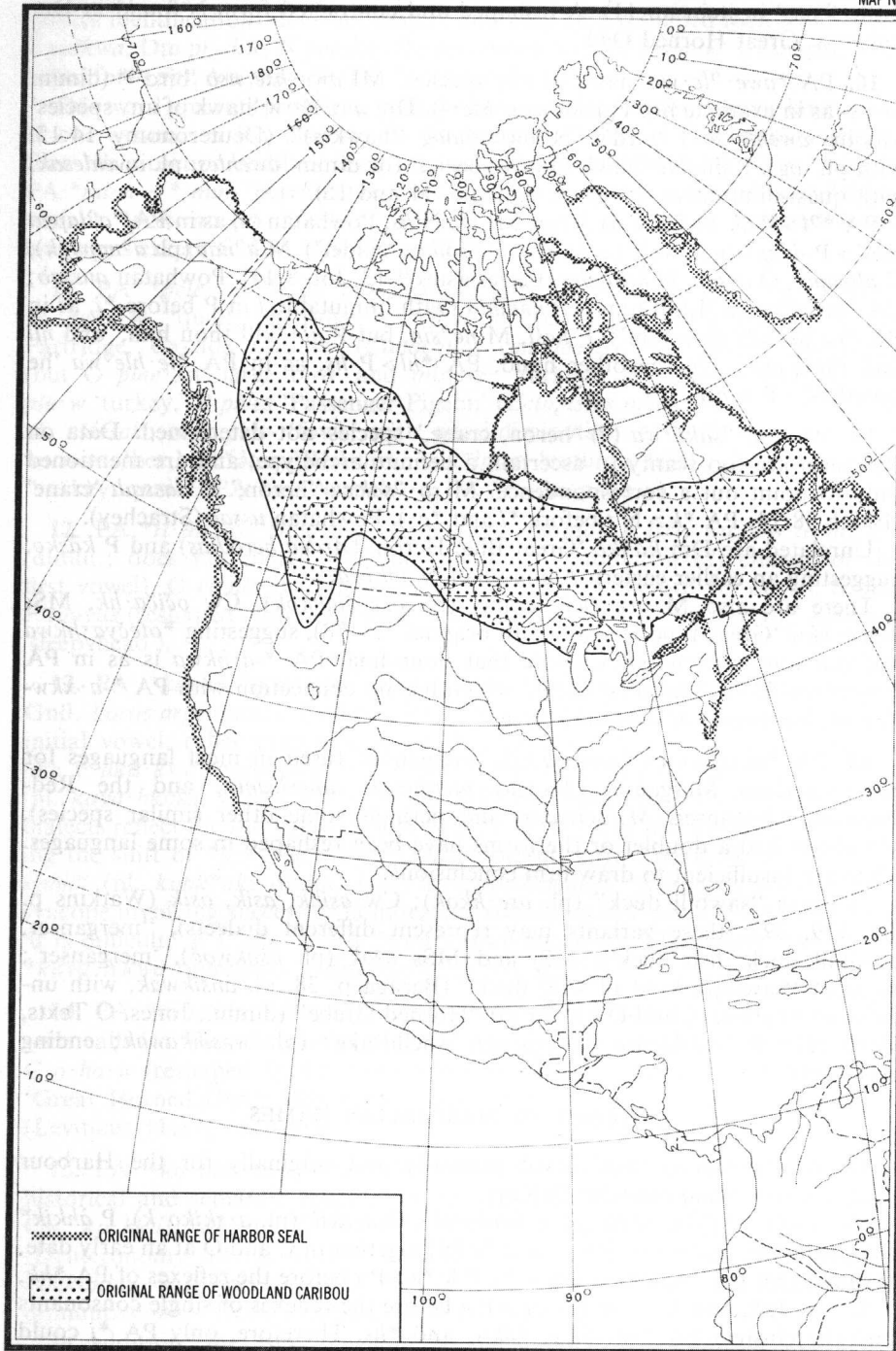
18. PA **wesehkwa* ~ **asekwa* (?), 'merganser' (used in most languages for
the American Merganser, *Mergus merganser americanus*, and the Red-
breasted Merganser, *M. serrator*, and perhaps some other similar species).
PA either had a doublet or the forms have been reshaped in some languages.
Data are insufficient to draw firm conclusions.

M *ose·h* "sawbill duck" (pl. *ose·hkok*); Cw *asihk*, *asik*, *osik* (Watkins p.
64, 119, 392; these variants may represent different dialects), "merganser,
saw-bill duck, fish duck"; MSj and MSs *ošok* (pl. *ošokwoč*), 'merganser';
O *ansik* "saw-bill, kind of wild duck" (Baraga p. 38, pl. *ansikwak*, with un-
original ns cluster), and O *osihka·ssi* "Horned Grebe" (dimin., Jones, O Texts,
II:60-62); P *wasihkawew* 'merganser, shelldrake' (pl. *wasihkawak*; ending
reshaped).

EVIDENCE OF MAMMALIAN NAMES

19. PA **a·skikwa* 'seal' (used primarily and originally for the Harbour
Seal, *Phoca vitulina concolor* DeKay).

Cw *a·hkik*, MSj *a·hčok* (pl. *a·hčokwoč*), O *a·skik* (pl. *a·skiko·k*), P *àhkik*^w
(pl. *àhkikwak*). Although PA *i and *e fell together in C and O at an early date,
P shows that the original vowel is *i. PA **e* > P i before the reflexes of PA **hk*,
**ʔl*, **xk*, **sk*, and **ht*, but PA **e* > P ə before the reflexes of single consonants
and the clusters PA **θk*, **kw*, **θkw*, and **hs*. Therefore, only PA *i could
be correct (See Map 3).



Note noun-final PA **-ikw*
**wa·pikwa* ~ **a·pikwa* 'rat,
wa·pikono·ha 'mouse,' Cw a

20. PA **e·hsepana* 'raccoon',
 O *e·ssipan*, Dm *e·spán*, P *és*
 raccoon has extended its range

21. PA **pešiwá* 'lynx, bobcat',
canadensis and *L. rufus*. F *pešiw*
 (pl. *pišo·č*), O *pišiw*, S *pešiw*

22. PA **anikwa* 'squirrel'
 19). F *anikwa*, C and Cw *anikwa*
 Dm *ani·kwəs* (dimin.), P *anikwa*
 The D and P forms have been
 and there is semantic specialization

23. PA **pele·nikwa* 'flycatcher',
 M *penε·nik*, D *ple·ni·kw*, D
pəlénik^wak). Apparently this
 and final **-anikw-a* 'squirrel',
 examples no. 11, 19, 22).

24. PA **mo·swa* 'moose'
mo·hsok), C and Cw *mo·swa*
 (pl. *mo·nsok*; with unoriginal
mo·sak), P *mos* (pl. *mòsok*).
 Map 5).

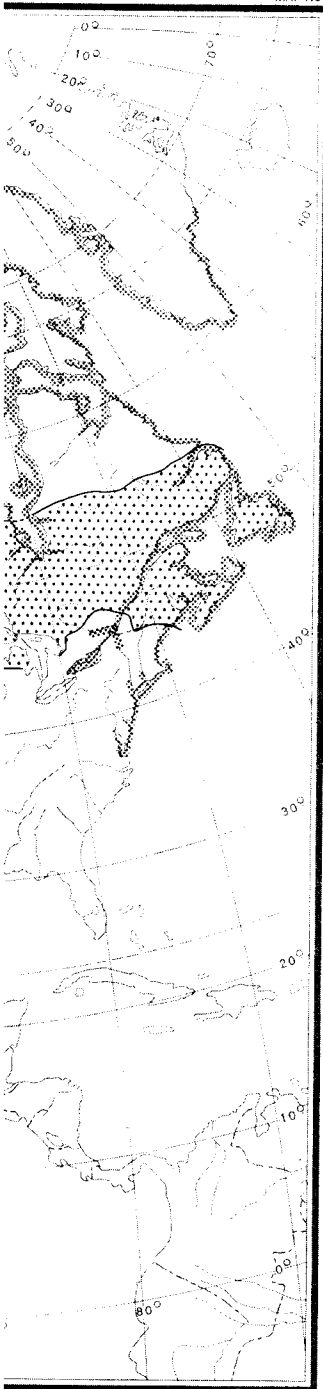
25. PA **ka·kwa* 'porcupine'
 tailed animal'). F *aka·kwa*
 vowel, as in example no. 13
 O *ka·k* (pl. *ka·kok*), S *kaak*
 5).

26. PA **šeka·kwa* 'skunk'
 F *šeka·kwa*; M *seka·k*; C *sika*
 (pl. *šika·kok*); S *šekaakwa*; I
 unoriginal prosthetic *n*-).

27. PA **wa·kwa*, with
**-a·kw-* 'bushy-tailed animal'
 form, and some have a
 (dimin. *-e·h-*, as in example
wa·kohsak), O *wa·košš* (
wonkquss-iss-og 'little foxes',
 P *k^wək^wsəss* (reshaped with
 and a different superadded
 PA **-ehš-* > P *-ohs-*, reduced
 cluster).

28. PA **maθkwa* 'bear'
maškw, O *makkwa*, S *mkwa*
 Samuel 17:34, II Kings 2:24

MAP No 3



Note noun-final PA **-ikw-a* 'small gnawing animal, rodent,' as in PA **wa·pikwa* ~ **a·pikwa* 'rat, mouse' (supported by the diminutives F *wa·pikono·ha* 'mouse,' Cw *a·pikosi·s*, P *αpik^wsehso*, and so on).

20. PA **e·hsepana* 'raccoon' (*Procyon lotor*). F *e·sepana*, M *ε·hsepan*, O *e·ssipan*, Dm *e·spán*, P *ésəpanəss* (dimin.; pl. *ésəpansak*) (See Map 4). The raccoon has extended its range northward in recent centuries.

21. PA **pešiwa* 'lynx, bobcat' (applies in some languages to both *Lynx canadensis* and *L. rufus*). F *pešiwa*, M *pese·w*, C and Cw *pisiw*, MSj *pišow* (pl. *pišo·č*), O *pišiw*, S *pešiwa*, P *pəso* (pl. *pəsəwak*).

22. PA **anikwa* 'squirrel' (generic), (PA **-ikw-* 'rodent,' as in example no. 19). F *anikwa*, C and Cw *anikwača·s* (with quasi-dimin.), S *hanikwa*, D *xáni·kw*, Dm *ani·kwəs* (dimin.), P *mánik^wsəss* 'chipmunk' (dimin.; pl. *mánik^wsak*). The D and P forms have been reshaped by initial accretion of a consonant, and there is semantic specialization in P.

23. PA **pele·nikwa* 'flying squirrel' (*Glaucomys volans* and *G. sabrinus*). M *penε·nik*, D *ple·ni·kw*, Dm *ple·n* (pl. *ple·nak*), A *planikw*, P *pálenik^w* (pl. *pələnik^wak*). Apparently this is an ancient compound of PA **pele-* 'fowl' and final **-anikw-a* 'squirrel,' in turn a derivative of PA **-ikw-* 'rodent' (See examples no. 11, 19, 22).

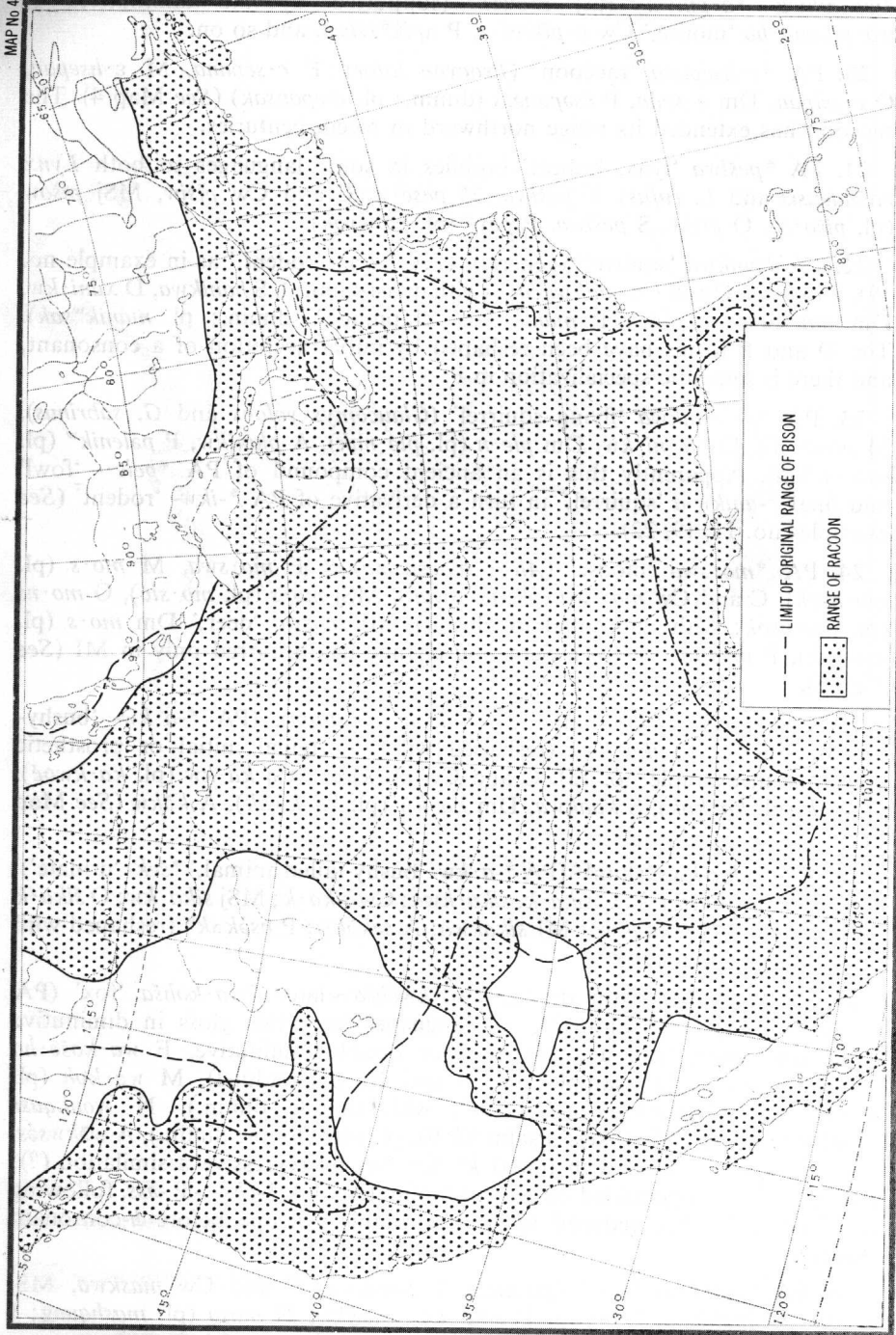
24. PA **mo·swa* 'moose' (*Alces americana*).# F *mo·swa*, M *mo·s* (pl. *mo·hsok*), C and Cw *mo·swa* (pl. *mo·swak*), MSj *mo·s* (pl. *mo·sič*), O *mo·ns* (pl. *mo·nsok*; with unoriginal *ns* cluster), MI *moswa* 'deer,' Dm *mo·s* (pl. *mo·sak*), P *mos* (pl. *mòsok*). Semantic change has occurred only in MI (See Map 5).

25. PA **ka·kwa* 'porcupine' (*Erethizon dorsatum*), (PA **-a·kw-* 'bushy-tailed animal'). F *aka·kwa* (reshaped with unoriginal initial or prosthetic vowel, as in example no. 13), C and Cw *ka·kwa*, MSj *ka·kw* (pl. *ka·kwoč*), O *ka·k* (pl. *ka·kok*), S *kaakwa*, Dm *ka·kw* (pl. *ká·kwak*), A *kəkw* (See Map 5).

26. PA **šeka·kwa* 'skunk' (PA **-a·kw-* 'bushy-tailed animal,' **šek-* 'urinate'). F *šeka·kwa*; M *seka·k*; C *sika·k*, *sika·kwa*; Cw *sika·k*; MSj *šika·kw*; O *šika·k* (pl. *šika·kok*); S *šekaakwa*; MI *sikakwa*; A *səkəkw*; P *nsəkək^w* (reshaped with unoriginal prosthetic *n-*).

27. PA **wa·kwa*, with dimin. **wa·kwehša* ~ later **wa·kohša* 'fox' (PA **-a·kw-* 'bushy-tailed animal'). All languages have this gloss in diminutive form, and some have a superadded or double diminutive. F *wa·koše·ha* (dimin. *-e·h-*, as in examples no. 6 and 10, superadded), M *wa·koh* (pl. *wa·kohsak*), O *wa·košš* (*wa·košši?*, with double dimin.), N *wonkquss* (*wonkquss-iss-og* 'little foxes,' Psalm 63:10; pl. with double dimin.), A *wəkwəsš*, P *k^wək^wsəss* (reshaped with initial *k^w* for **w*, by regressive assimilation (?); and a different superadded or second diminutive. PA **-ehš->P -əss*, following PA **-ehš->P -ohs-*, reduced to *-s-* by syllabic syncope before *h*-consonant cluster).

28. PA **maθkwa* 'bear' (generic). F *mahkwa*, C and Cw *maskwa*, MSj *maškw*, O *makkwa*, S *mkwa*, D and Dm *maxkw*, N *masq* (pl. *mashquog*; I Samuel 17:34, II Kings 2:24), Arapaho *wóx* (PA **m>w*, PA **a>o*).



There is also the substitute for arily 'bear,' because of taboo 'bear' (pl. *awε·hsehsak*) and as in example no. 27 above; P **w*, as in PA **nemehšo·mehsa·kehkwā* 'my kettle, pot' > P *nā*

29. PA **akwaθkwa* 'woodchuck' 'adhere; dirty,' **-aθkw-a* 'bear' dissimilative loss of *w*, as also in "conies"; Proverbs 30:26) (Se

30. PA **pešehkiwa* 'buffalo' (pl. *pišikkīwak*), A *pəsihkó*, F sequences **-eCehk-* and **-elw-*

This is the PA term for the Shoemaker), which, when color was darker and had a less pronounced. The first English-speaking person, Argoll, who in 1612 found the "land" (Purchas). Wood bison in New York, and made seasonal migrations in mountain valleys of central Pennsylvania and as far south as southeastern New York, and West Virginia parts of their range, they formed the plains bison. Hybrids of the two is known. Like the bison because of their poor eyesight. The eastern subspecies became extinct in 1770, in northern and central Ohio and Kentucky between the species of wood bison (*Bison*). Great Slave Lake region of northern Alberta eastward to that the Swampy Cree term p

31. PA **atehkwa* 'caribou' *caribou caribou* Gmelin, or who group all varieties in one *atihk*, MSj *atohk* (pl. *atohkwā* Texts, vol. I, p. 406), P *atohkwā* tree,' *Acer pennsylvanicum*, the before PA **hš* and **hkw* with sem 28), and languages with sem *atohk* 'deer,' Arapaho *hóte?* 'deer'

N *ahuhq* 'deer' (pl. *ahuhq*) Dm *ahtó* 'deer' seem to be related to PA **e>o* before PA **hkw*, Dm at least before this con

There is also the substitute form, PA **awe·hsehša* ‘little who is it?’, secondarily ‘bear,’ because of taboo or word avoidance, supported by M *awε·hseh* ‘bear’ (pl. *awε·hsehšak*) and P *áwehsohs* (pl. *awéhsohsak*; PA dimin. **-ehš-*, as in example no. 27 above; PA **e>P o* before PA **hš* and **hkw* with loss of **w*, as in PA **nemehšo·mehsa* ‘my grandfather’ > P *námóhsomæss*; PA **netax·kehkwa* ‘my kettle, pot’ > P *nátahkohk*).

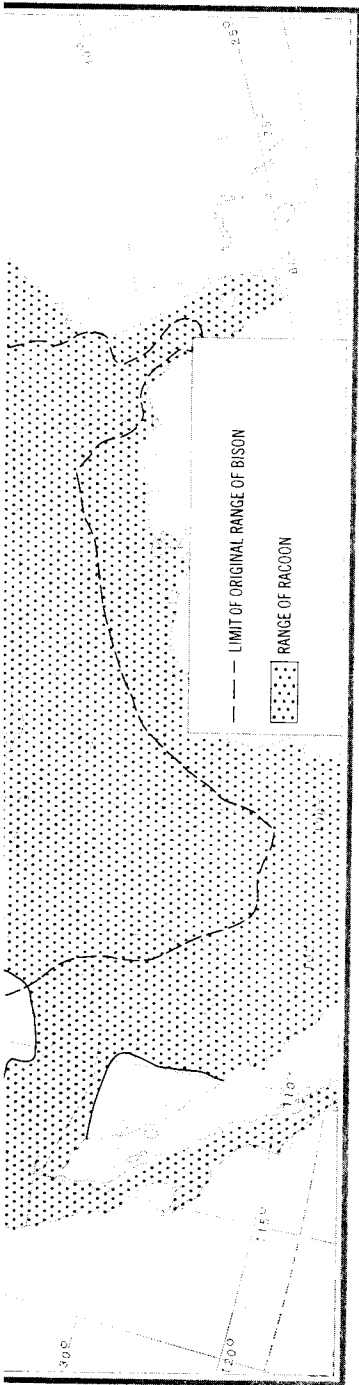
29. PA **akwaθkwa* ‘woodchuck, groundhog’ (*Marmota monax*), (PA **akw-* ‘adhere; dirty,’ **-aθkw-a* ‘bear’). M *akuah* (pl. *akuahkok*), A *akaskw* (with dissimilative loss of *w*, as also in the N form to follow), N *ogkosq* (pl. *ogkoshquog* ‘conies’; Proverbs 30:26) (See Map 5).

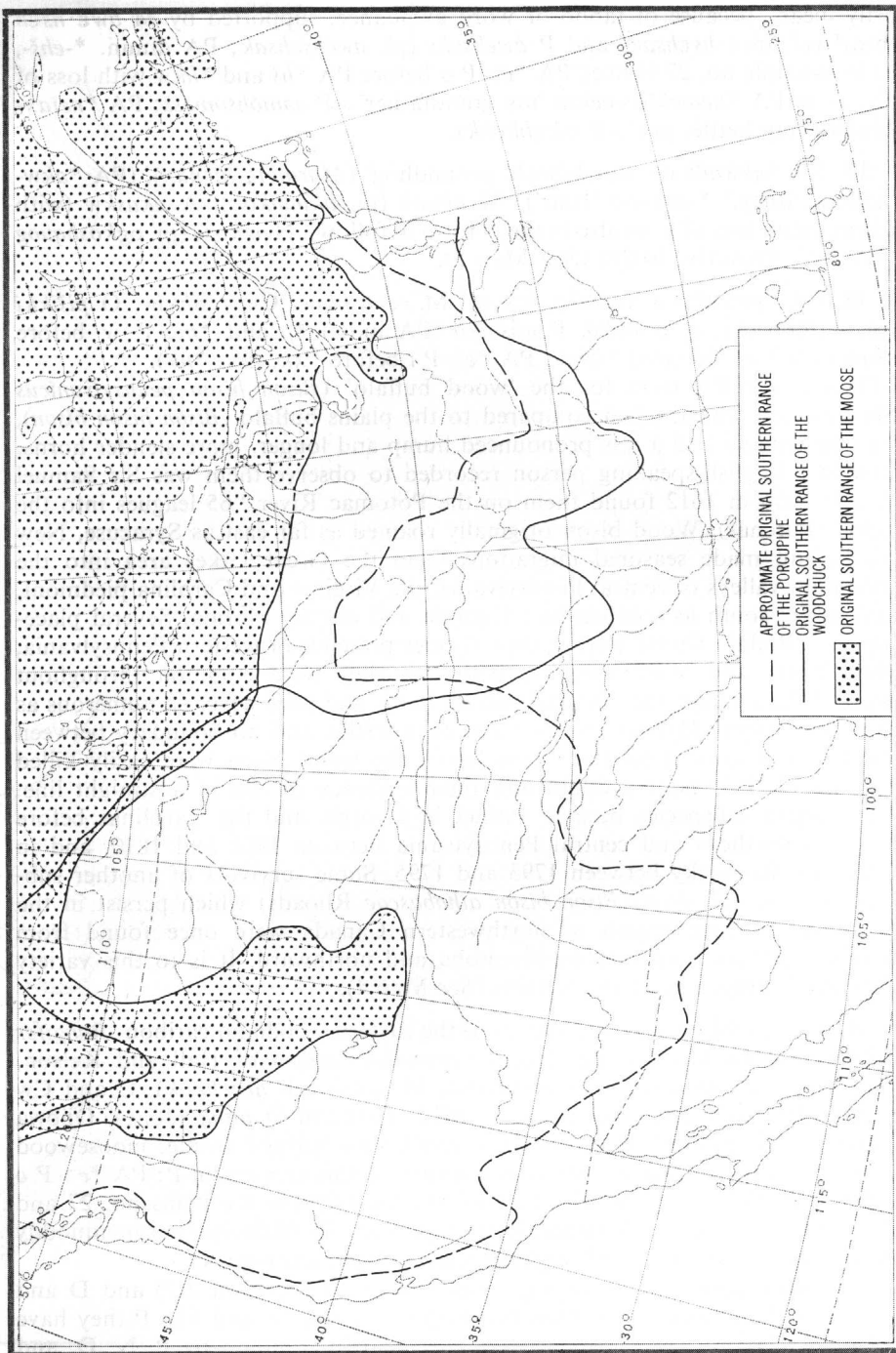
30. PA **pešehkiwa* ‘buffalo, bison.’ M *peš·hkiw*, Cw *pišihkiw*, O *pišikki* (pl. *pišikkiwak*), A *pəšihkó*, P *wəšihko* (PA initial **p* and **m>P w* before sequences **-eCehk-* and **-elw-*; PA **e>P i* before **xk*, **sk*, **hk*).

This is the PA term for the ‘wood buffalo’ (*Bison bison pennsylvanicus* Shoemaker), which, when compared to the plains buffalo (*Bison bison bison*), was darker and had a less pronounced hump and longer, more slender horns. The first English-speaking person recorded to observe them was Sir Samuel Argoll, who in 1612 found them on the Potomac River “65 leagues into the land” (Purchas). Wood bison originally roamed as far east as Syracuse, New York, and made seasonal migrations from the Great Lakes area into the mountain valleys of central Pennsylvania, the Virginia and Carolina piedmont, and as far south as southeastern Georgia and central Florida. Several place-names (“Buffalo Creek”) attest their former presence in western Pennsylvania, New York, and West Virginia. Although they were common throughout parts of their range, they formed smaller herds and were never so numerous as the plains bison. Hybrids of the races were fertile, and no boundary between the two is known. Like the plains bison, the wood bison were easily killed because of their poor eyesight and their tendency to run in a straight line. The eastern subspecies became extinct in Georgia and the Carolinas before 1770, in northern and central Pennsylvania between 1801 and 1810, and in Ohio and Kentucky between 1793 and 1795. Some survivors of another subspecies of wood bison (*Bison bison athabasca* Rhoads) which persist in the Great Slave Lake region of northwestern Canada were once found from northern Alberta eastward to Manitoba and northward. It is to this variety that the Swampy Cree term pertains (See Map 4).

31. PA **atehkwa* ‘caribou’ (refers to the eastern woodland caribou, *Rangifer caribou caribou* Gmelin, or *Rangifer tarandus caribou* of Hall and Kelson, who group all varieties in one species). M *atε·h* (pl. *atε·hkok*), C and Cw *atihk*, MSj *atohk* (pl. *atohkwoč*), O *atikk*, northern O *atihk* (Jones, Ojibwa Texts, vol. I, p. 406), P *atohk-* (in P *atohkimosi* ‘striped maple, moosewood tree,’ *Acer pennsylvanicum*, the only example of this element in P; PA **e>P o* before PA **hš* and **hkw* with loss of **w*, for example see items no. 27 and 28), and languages with semantic change, such as Malecite-Passamaquoddy *atohk* ‘deer,’ Arapaho *hóte?* ‘bighorn sheep’ (*Ovis canadensis*).

N *ahtuhq* ‘deer’ (pl. *ahtuhquog* ‘roes,’ Song of Solomon 2:7) and D and Dm *ahtó* ‘deer’ seem to be reshaped with *ht* for PA **t*, and like P they have PA **e>o* before PA **hkw*, a vowel shift held in common by P, N, D, and Dm at least before this consonant cluster. N, D, and Dm show semantic





change by transferring the migrated south of the range

32. PA **aya·pe·wa* 'buck'; M *aya·pe·w*; C and Cw *aya·hayaapeeki*; N *aiump, eiyon*; P *áyape* (pl. *áyapak*).

33. PA **mahkwehsehsa* ~ (PA dimin. **-ehs-*). Since this is undetermined. F *mahkose*, in F, with a double diminutive, the very common living diminutive (pl. *mák^wsəssak*; dimin. *-əss*) the third litter' (last one borrowed diminutive (pl. *mak^wsəssisak*) itself may be of diminutive 'bear.'¹⁹

34. PA **ameθkwa* 'beaver'; O *amikk*; S *hame[?]kwa*; Dm **eθkwe·wa* 'woman' > Dm *ó*.

35. PA **wa[?]šaškwa* 'muskrat'; *waššašk*, *oššašk* (pl. *oššaška*) initial syllable loss, and PA **no·hšihse* *osasquus* (dimin., Strachey).

C and Cw *wačask* 'muskrat' by diminutive symbolism.

36. PA **šenkwehsa* 'weasel'; perhaps by analogy, to M *s* MSj *šihkoši·š* (dimin.); O *šinkosaki* (See the next item).

37. PA **ša·nkwe·hšiwā* 'red'; *sa·hkwe·siw* (pl. *sa·hkwe·siw*) reshaped or different dimin. (pl. *sák^wehsəwak*).

Apparently because of this and the close resemblance of the changes have occurred in M have transferred the original

EVII

38. PA **ka·wa·ntakwa* 'evergreen or needle tree,' as with PA **-a·xkw-* 'wood; ha spruce tree' (pl. *ka·wa·ntakwa*) but M *ka·wa·htek* "spruce"

change by transferring the term to the deer when their speech communities migrated south of the range of the caribou (See Map 3).

32. PA **aya·pe·wa* 'buck; male of moose, deer, elk, caribou.' F *aya·pe·wa*; M *aya·pε·w*; C and Cw *aya·pe·w*; MSj *aya·pe·w*; O *aya·pe·*; S *hayaape* (pl. *hayaapeeki*); N *aiump*, *eiympha* (Proverbs 5:19, 6:5; Song of Solomon 8:14); P *áyape* (pl. *áyapak*).

33. PA **mahkwehsehsa* ~ **maxkwehsehsa* 'fawn,' itself a diminutive form (PA dimin. **-ehs-*). Since there is no C cognate the first cluster (**hk* or **xk*) is undetermined. F *mahkosese·ha* 'little fawn,' an archaic or obsolescent word in F, with a double diminutive (F *-es-* < PA **-ehs-*, to which is added *-e·h-*, the very common living dimin., as in examples no. 6, 10, 27), P *mák^wsəss* 'fawn' (pl. *mák^wsəssak*; dimin. *-əss* < PA **-ehs-*), P *mák^wsəssis* 'little fawn; fawn of the third litter' (last one born in a litter of three, and stunted in size), a double diminutive (pl. *mák^wsəssisak*). The stem (PA **mahkwehs-* ~ **maxkwehs-*), which itself may be of diminutive origin, has no relationship with PA **maθkw-a* 'bear.'¹⁹

34. PA **ameθkwa* 'beaver.' F *amehkwa*, C and Cw *amisk*, MSj *amiškw*, O *amikk*; S *hame[?]kwa*; Dm *amóxkw* (PA **e* > Dm *o* before **θkw*, as in PA **eθkwe·wa* 'woman' > Dm *óxkwe·w*).

35. PA **wa[?]šaškwa* 'muskrat.' F *ašaškwa*; M *o[?]sas* (pl. *o[?]saskok*); O *waššašk*, *oššašk* (pl. *oššaškok*); S *hoθaškwa*; Dm *xwáškwəšəš* (dimin.; with initial syllable loss, and PA **[?]š* and **hš* > Dm *xw* before original short vowels only, as in PA **no·hšihsema* 'my grandchild' > Dm *nó·xwi·s*); Powhatan *osasquus* (dimin., Strachey).

C and Cw *wačask* 'muskrat,' and MSj *očiškw* agree, having *č* for expected *s*, by diminutive symbolism.

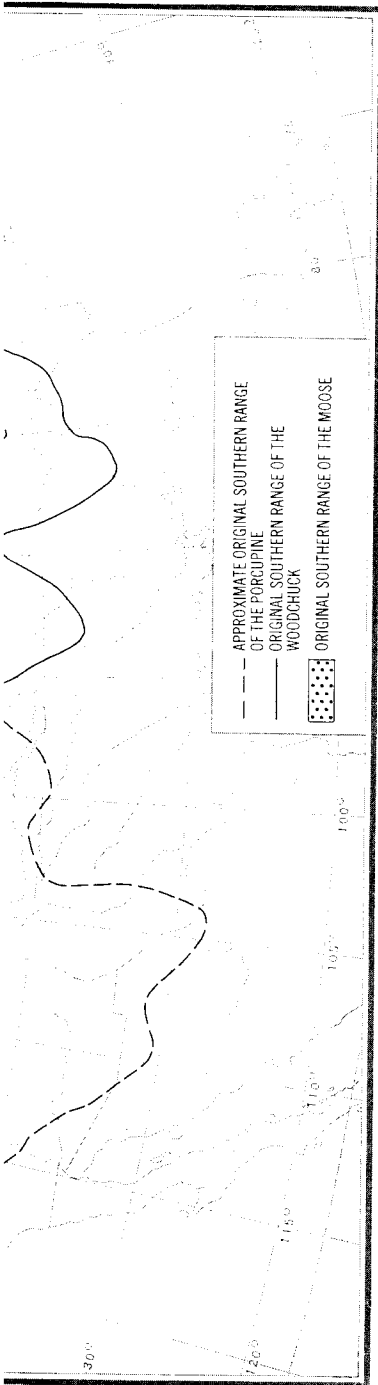
36. PA **šenkwehsa* 'weasel'.# F *šekosa*; M *seko·h* (pl. *seko·hsak*; reshaped, perhaps by analogy, to M *seka·k* 'skunk'); C and Cw *sihkos* (pl. *sihkosak*); MSj *šihkoši·š* (dimin.); O *šinkwass*, *šinkoss*; but MI *šinkosa* 'mink' (pl. *šinkosaki*) (See the next item).

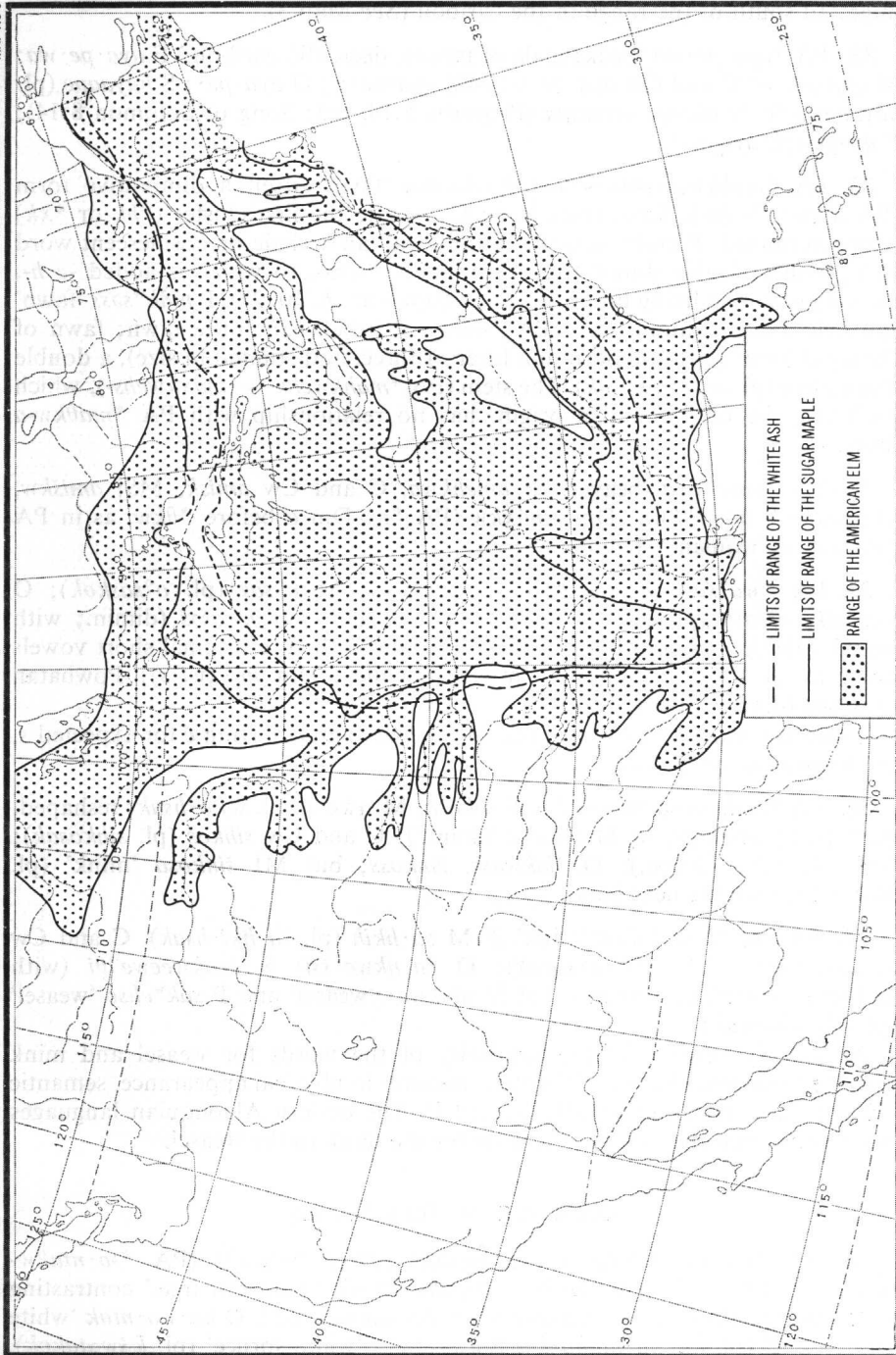
37. PA **ša·nkwe·hšiwə* 'mink'.# M *sa·hkih* (pl. *sa·hki·hsak*), C and Cw *sa·hkwe·siw* (pl. *sa·hkwe·siwak*); O *ša·nkwe·ššī*; S *šaakweewe[?]θi* (with reshaped or different dimin.), but D *sánkwe·* 'weasel' and P *sák^wehsəwak*).

Apparently because of the similarity of the words for weasel and mink and the close resemblance of the two creatures in physical appearance, semantic changes have occurred in MI, D, and P. The eastern Algonquian languages have transferred the original PA term for the mink to the weasel.

EVIDENCE OF TREE NAMES

38. PA **ka·wa·ntakwa* 'white spruce' (*Picea glauca*); (PA **-a·ntakw-* 'evergreen or needle tree,' as in F *papaka·takwa* 'evergreen tree,' contrasting with PA **-a·xkw-* 'wood; hardwood or deciduous tree'). O *ka·wa·ntak* 'white spruce tree' (pl. *ka·wa·ntako·k*), P *káwətak^w* 'white spruce' (pl. *káwətakok*), but M *ka·wa·htek* "spruce" which does not match due to reshaping with the





M noun-final *-a·htek* which 'stick, stem' > C *-a·htik*, O *wətamakánahtək* 'pipestem

39. PA **menahekwa* 'tar Cw *minahik* "spruce" (pl. (pl. *minihikwoč*), P *mənəho*

PA **e* > P *ə* before a sin and **kw* (only when treated loss of **w* (See examples n

Penobscot has preserved spruce' is already provided semantic change (See Map

40. PA **a·kema·xkwa* 'root **a·kem-*, from PA **a* P *əkəm*; and PA **-a·xkw-* no. 38). Cw *a·kima·sk* 'blac O *a·kima·kk* 'white ash,' P **sk*, **θk*, and **nk*, rather th

Ojibwa and Penobscot Montagnais transferred the of the range of the white as

41. PA **wi·ʔsaka·xkwa* **wi·ʔsak-* 'bitter,' **-a·xkw-* *hkwa*, M *we·ʔsaka·htek* ('tree' < PA **-a·htekw-* 'tree' accurately determined for *wi·ssaka·kk* 'frêne gras' or both *Populus tremuloides* and **-i·ʔs-* > P *-əss-*, see exampl

42. PA **šenta* 'conifer, M *šehta·k* 'bough of needle **šehta·h*, similar to M *me* supported by F *anehka*, C 'evergreen' (pl. *sihtak* "ever *canadensis*) (pl. *šántak*), P *sətayak*; ending reshaped by

The reconstruction of PA appears to be an early borro since Riggs records Dakot Munsee Delaware is a speci the most common conifer in

43. PA **ani·pya* 'elm' (r AN. F *ani·pi* (pl. *ani·pye·* (pl. *ani·pi·k* AN), S *haniip* (See map 6).

44. PA **wato·xpyi* 'alder, *Alnus rugosa*, former

M noun-final *-a·htek* which has the generalized meaning 'tree' (PA **-a·htekw-* 'stick, stem' > C *-a·htik*, O *-a·ttik* 'stick, tree,' P *-ahtək*^w 'stick, stem,' as in P *wətaməkánahtək*^w 'pipestem') (See Map 7).

39. PA **menahekwa* 'tamarack, American larch' (*Larix laricina*).# C and Cw *minahik* "spruce" (pl. *minahikwak*), MSj *minihikw* 'white spruce tree' (pl. *minihikwoč*), P *mənəhok* 'tamarack' (pl. *mənəhokak*).

PA **e* > P *ə* before a single consonant, and PA **e* > P *o* before **hš*, **hkw*, and **kw* (only when treated as **hkw* following **h* in the sequence **-hekw-*) with loss of **w* (See examples no. 27, 28, 31); otherwise PA **e* > P *ə* before **kw*.

Penobscot has preserved the original meaning of the PA term since 'white spruce' is already provided for (See example no. 38), and C, Cw, and MS show semantic change (See Map 7).

40. PA **a·kema·xkwa* 'white ash' (*Fraxinus americana*).# (a compound of root **a·kem-*, from PA **a·kema* 'snowshoe' > F *a·kema*, M *a·kem*, O *a·kim*, P *əkəm*; and PA **-a·xkw-* 'wood; hardwood or deciduous tree' (See example no. 38). Cw *a·kima·sk* 'black ash' (*Fraxinus nigra*), MSj *a·čima·škw* 'black ash,' O *a·kima·kk* 'white ash,' P *əkəmahk*^w 'white ash' (PA **a·* > P *a* preceding **xk*, **sk*, **θk*, and **nk*, rather than the regular correspondence to P *α*).

Ojibwa and Penobscot preserve the original meaning, and the Cree-Montagnais transferred the name to a similar species when they migrated north of the range of the white ash (See Map 6).

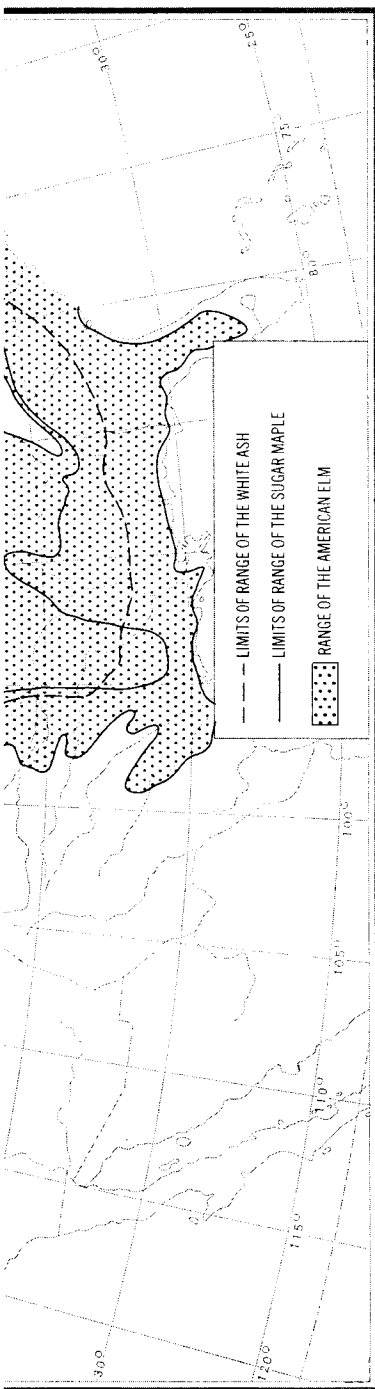
41. PA **wi·ʔsaka·xkwa* "kind of tree, PA species not determined" (PA **wi·ʔsak-* 'bitter,' **-a·xkw-* 'wood; hardwood or deciduous tree'). F *wi·saka·hkwa*, M *we·ʔsaka·htek* (reshaped with M generalized noun-final *-a·htek* 'tree' < PA **-a·htekw-* 'tree; stick, stem.' See item no. 38) (the species is not accurately determined for either F or M, but it may be the black ash), O *wi·ssaka·kk* 'frêne gras or black ash' (*Fraxinus nigra*), P *wássakahk*^w 'aspens,' both *Populus tremuloides* and *Populus grandidentata* (pl. *wássakahk*^wak; for PA **-i·ʔs-* > P *-əss-*, see example no. 8).

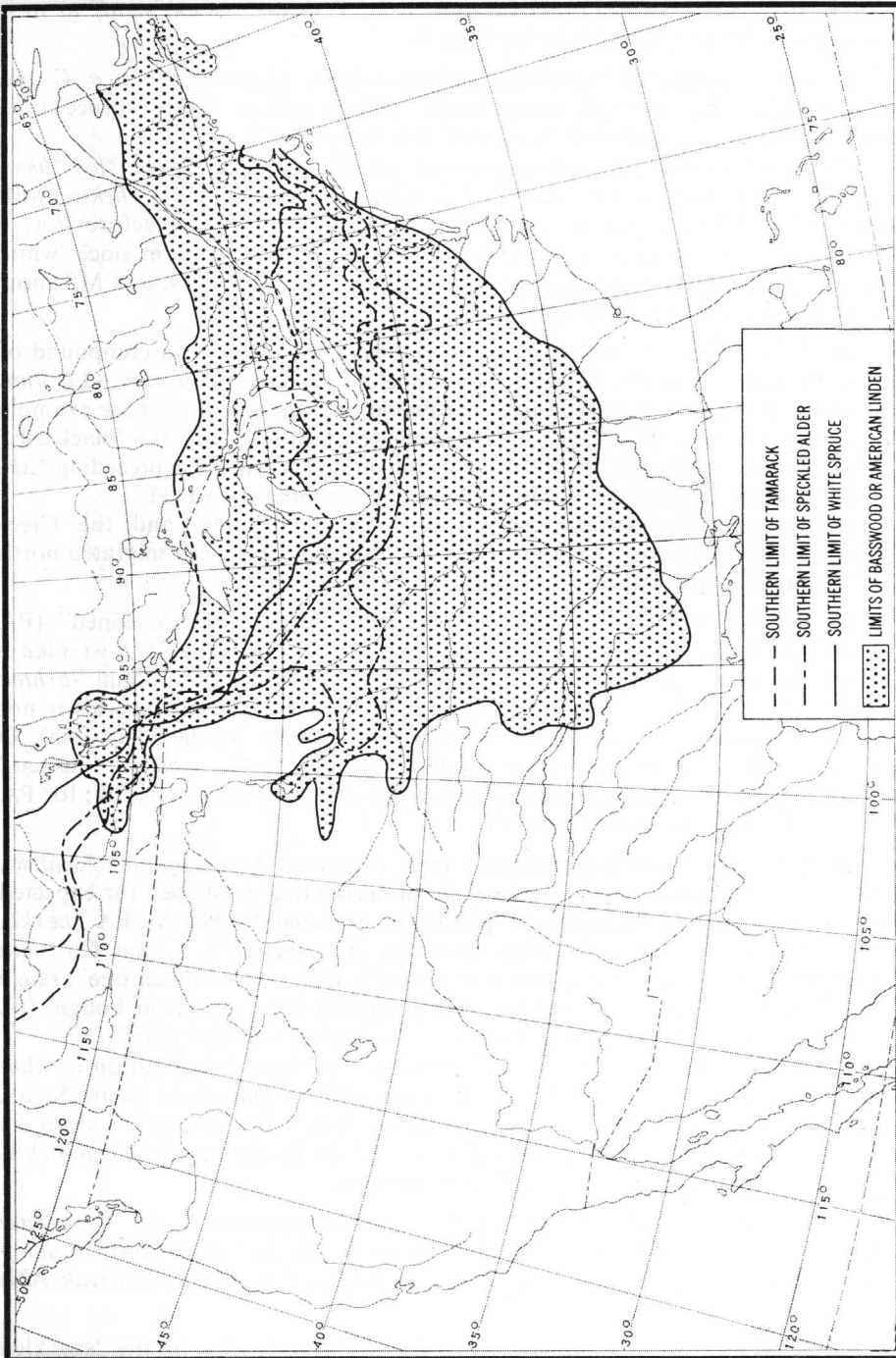
42. PA **šenta* 'conifer, evergreen tree; evergreen bough,'# pl. **šentaki*. M *sehta·k* 'bough of needle tree, needle of needle tree' (reshaped for expected **sehta·h*, similar to M *mehka·k* 'goose' for expected **nehka·h* < PA **nexka*, supported by F *anehka*, C *niska*, O *nikka*, Arapaho *né*[?]), C and Cw *sihta* 'evergreen' (pl. *sihtak* "evergreen brushwood"), Dm *šənt* 'hemlock tree' (*Tsuga canadensis*) (pl. *šəntak*), P *səti* 'conifer, evergreen tree; evergreen bough' (pl. *sətəyak*; ending reshaped by analogy to P *ənipi* 'elm,' *wətohipi* 'alder').

The reconstruction of PA **šenta* 'evergreen tree' finds confirmation in what appears to be an early borrowing from Algonquian in Dakota or Santee Sioux, since Riggs records Dakota *šitá* 'tamarack tree.' The semantic change in Munsee Delaware is a specialization accounted for by the fact that hemlock is the most common conifer in the Munsee country.

43. PA **ani·pya* 'elm' (refers chiefly to *Ulmus americana*), pl. **ani·pyaki* AN. F *ani·pi* (pl. *ani·pye·ni* INAN), M *ane·p* (pl. *ane·pyak* AN), O *ani·p* (pl. *ani·pi·k* AN), S *haniipi* (pl. *haniipiye* INAN), P *ənipi* (pl. *ənipəyak* AN) (See map 6).

44. PA **wato·xpyi* 'alder' (refers originally and chiefly to the 'speckled alder,' *Alnus rugosa*, formerly *A. incana*), pl. **wato·xpyali* INAN. M *wato·p*





- - - SOUTHERN LIMIT OF TAMARACK
 - · - SOUTHERN LIMIT OF SPECKLED ALDER
 — SOUTHERN LIMIT OF WHITE SPRUCE
 ···· LIMITS OF BASSWOOD OR AMERICAN LINDEN

(pl. *wato·pyak* AN), C and (pl. *ato·špi·č*), O *wato·pp* (INAN) (See Map 7).

45. PA **wi·kopiminšya* pl. **wi·kopiminšyaki* AN. *we·kopemeh* (pl. *we·kopemeh*) S *wiikopimiiši*, MI *wikopimiiši*

The term is a derivative 'bark' (a compound of PA **w·eminšy-a* 'tree; originally a F *-emiši*, M *-emehsy-* (sing. *-imənši*, N *-imis*, and P *-amis*) has been phonetically unsteady as the result of the ancient fluctuation of 'berry' and the noun-final **-a* 'duck' and the noun-final **-a*. The forms do not all match the expected reshaped element with *-imi·šš* for expected **-nš* cluster served the original **nš* cluster in the eastern languages by the trawling sets, so that Dm has *-osi* (See Map 7).

46. PA **aʔsena·minšya* 's (PA **aʔsenyi* 'rock, stone,' *asena·miši* (pl. *asena·mišye*) (pl. *ahsəna·mánšəyak* AN), M noun-final *-aw* 'tree exuding' (See Map 6).

47. PA **waʔša·we·minšya* **eminšy-a* 'tree'; see example

M *sa·we·meh* 'beech' (pl. expected M *ʔs*, O *šš* < PA **neʔšwa·šika*), O *ašša·we·n* 'beech tree' (pl. *waša·we·ma*) and does not match (See Map 6).

48. PA **keno·šye·ʔsiwa* 'cent (root PA **keno·šye-* **name·ʔsa* 'fish' > M *name·*

M *kenu·si·ʔs-* in *kenu·si* quasi-diminutive; reshaped of M *-aweh*, *-awe·hsy-* 'tree bark'), P *kanósehso* 'willow 'living creature,' a quasi-dim

PA **e ~ *a* > P *a ~ a*, as in *nahs* 'three' < PA **neʔθwi*. P ing **i* (as in examples no. 8

(pl. *wato·pyak* AN), C and Cw *ato·spiy* (pl. *ato·spiya* INAN), MSj *ato·špiy* (pl. *ato·špi·č*), O *wato·pp* (pl. *wato·ppi·n* INAN), P *wàtohp* (pl. *wàtohpəyal* INAN) (See Map 7).

45. PA **wi·kopiminšya* 'basswood, American linden' (*Tilia americana*), pl. **wi·kopiminšyaki* AN. F *wi·kopimiši* (pl. *wi·kopimišye·ni* INAN), M *we·kopemeh* (pl. *we·kopemehsyak* AN), O *wi·kopi·mi·šš* (pl. *-i·n* INAN), S *wiikopimiiši*, MI *wikopiminši*, P *wikəpimisi* (pl. *wikəpimisəyak* AN).

The term is a derivative of PA **wi·kopyi* 'fibrous, building, or basswood bark' (a compound of PA **wi·k-* 'shelter, house, dwell,' **-ekop-* 'bark') and PA **-eminšy-a* 'tree; originally a fruit, berry, or nut bearing tree,' with the reflexes F *-emiši*, M *-emehsy-* (singular *-emeh*), O *-imi·šš*, S *-imiiši*, MI *-iminši*, Dm *-imənši*, N *-imis*, and P *-əmisi*. From the historical point of view this noun-final has been phonetically unstable, a feature which goes back to PA times and is the result of the ancient fluctuation of **i· ~ *i*, which is evident in PA **mi·n-a* 'berry' and the noun-final **-min-a* 'berry of a certain type,' and PA **ši·ʔši·p-a* 'duck' and the noun-final **-eʔšip-a* 'duck of a certain species.' Consequently the forms do not all match in the various languages. Ojibwa has apparently reshaped the element with loss of *n* and compensatory vocalic lengthening, having *-imi·šš* for expected **-iminš*, whereas Miami and Delaware have preserved the original **nš* cluster. The instability of the vocalic length is reflected in the eastern languages by the splintering of the element into a series of contrasting sets, so that Dm has *-imənši*, *-imonši*, and P has *-əmisi*, *-əmosi*, *-əməsi*, and *-osi* (See Map 7).

46. PA **aʔsena·minšya* 'sugar maple' or 'rock maple tree' (*Acer saccharum*), (PA **aʔsenyi* 'rock, stone,' F *aseni*, pl. *asenyə·ni*; PA **-eminšy-a* 'tree'). F *asena·miši* (pl. *asena·mišye·ni* INAN), O *assina·mi·šš*, Dm *ahsəná·mənši* (pl. *ahsəna·mánšəyak* AN), MI *se·naminši*, A *sənəmosi*, P *ssənəw* (reshaped with noun-final *-əw* 'tree exuding sticky sap,' as in P *pkʷəhəw* 'balsam fir tree') (See Map 6).

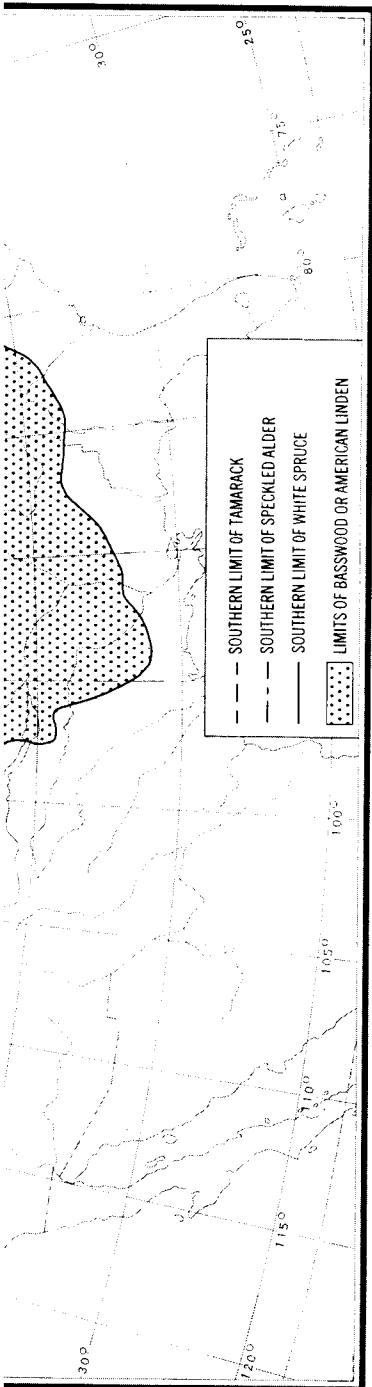
47. PA **waʔša·we·minšya* 'American beech' (*Fagus grandifolia*), (PA **-eminšy-a* 'tree'; see examples no. 45 and 46).

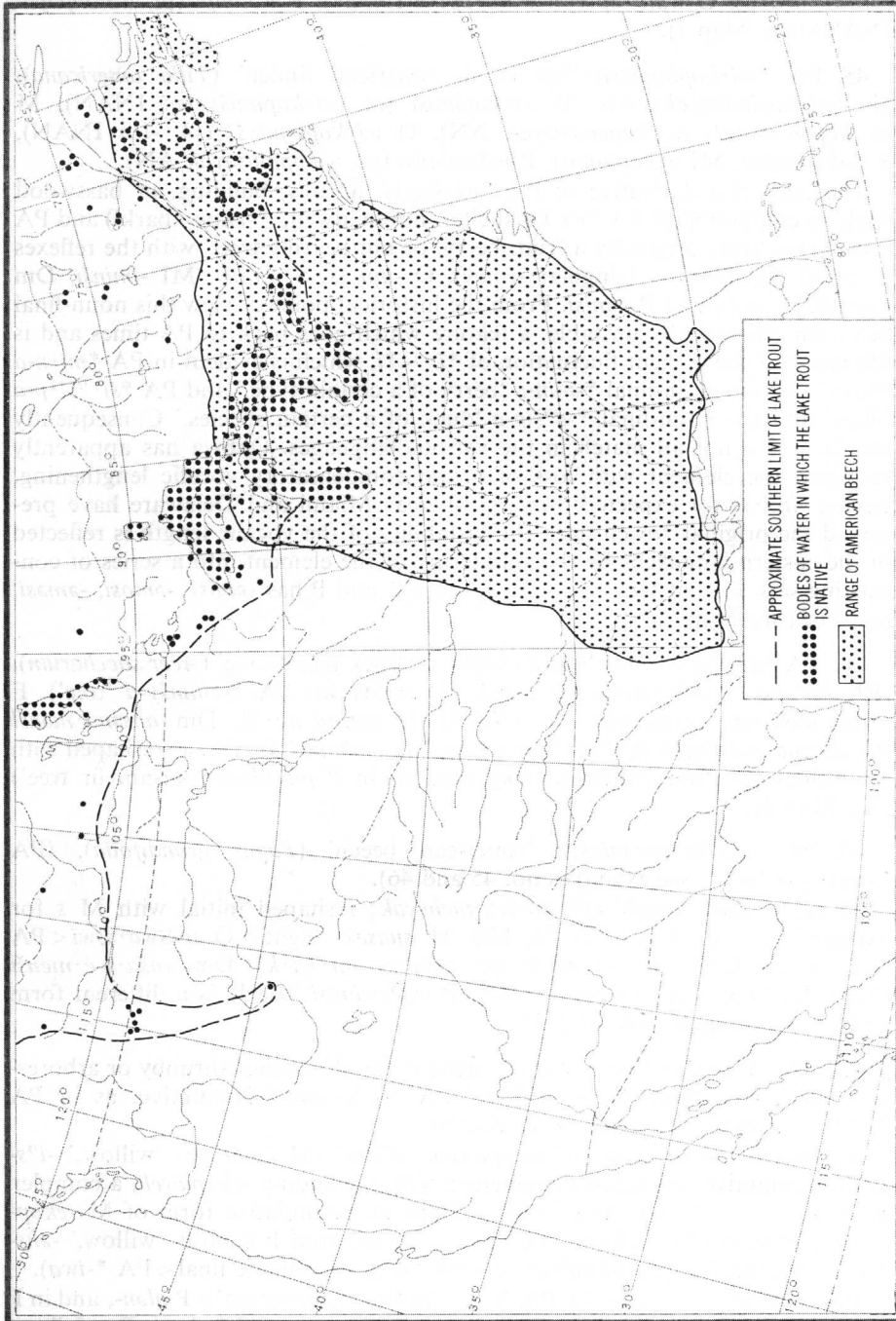
M *sa·we·meh* 'beech' (pl. *sa·we·mehsyak*; reshaped initial with M *s* for expected M *ʔs*, O *šš* < PA *ʔš*, like M *suasek* 'eight,' O *niššwa·sswi* < PA **neʔšwa·šika*), O *ašša·we·mi·šš* (pl. *ašša·we·mi·šši·k*), Dm *waša·we·menši* 'beech tree' (pl. *waša·we·mánšəyak*). P *wačəwimisi* 'beech' is a different form and does not match (See Map 8).

48. PA **keno·šye·ʔsiwa* 'willow,' generic for all species, shrubby or arborescent (root PA **keno·šye-* 'willow,' PA **-eʔs-* quasi-diminutive, as in PA **name·ʔsa* 'fish' > M *name·ʔs*, P *nəmehs*).

M *kenu·si·ʔs-* in *kenu·si·ʔsekapaweh* 'willow' (M *kenu·si-* 'willow,' *-iʔs-* quasi-diminutive; reshaped or reformed with the ending *-ekapaweh*, a complex of M *-aweh*, *-awe·hsy-* 'tree,' and perhaps an assimilative form of M *-ekop-* 'bark'), P *kanósehso* 'willow' (pl. *kanósehsəwak*; root P *kanose-* 'willow,' *-əhs-* 'living creature,' a quasi-diminutive < PA **-eʔs*, *-o* animate final < PA **-iwa*).

PA **e ~ *a* > P *ə ~ a*, as in PA **elen-* 'ordinary, common' > P *ələn-*, and in P *nahs* 'three' < PA **neʔθwi*. PA **ʔs* > P *hs* following **e·* and **e* but > P *ss* following **i·* (as in examples no. 8 and 41). Compare Dm *kano·še·sa·hkʷ* 'willow.'





49. PA **mi·twiya* 'quaking aspen,' F *mi·twiya* 'quaking aspen,' PA **wi > C o* after a nonsyllabic *w*. MSj *mi·toš* 'quaking aspen,' loss of postconsonantic *w*), very probably refers to *P. tr.*

None of the above languages. Shawnee has *miitwa?ki* "red tree," both of which show species identification. The apparent semantic change due to the shift to regions south of the range of the Ohio and Cumberland rivers, it extends southward to occur in Illinois, Indiana, Ohio, Pennsylvania, and the Appalachian Mountains south to southwest of the Great Plains, eastern Utah, Colorado, and the semiarid region, and the semantic change in the conclusions to be set forth.

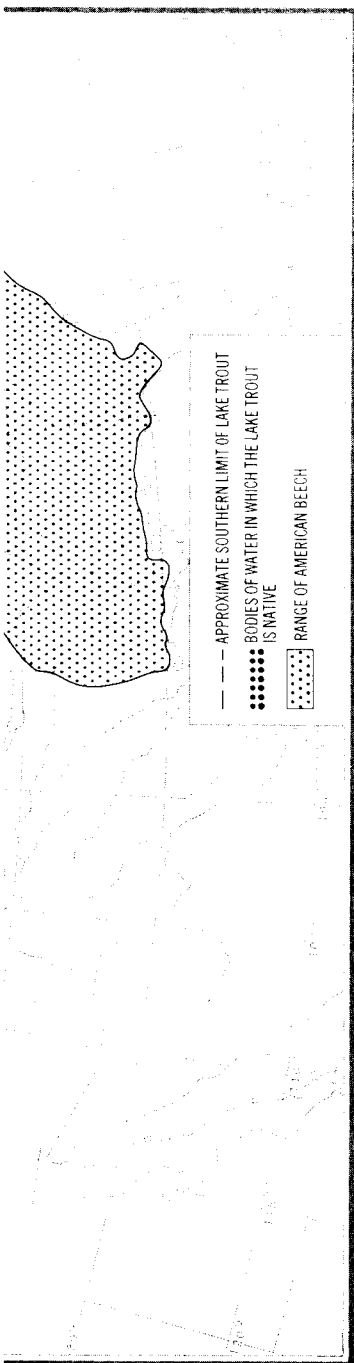
EVI

50. PA **a?šikanwa* 'black mouth bass, smallmouth black bass,' *mieu* L'Academy; although in many languages (Fox, and so on) a southern species, the 'large term, *achigan*, is an obvious

F *ašikanwa* 'black bass,' *ásikanak* AN; contrasting with from PA **ašikanwi* 'sock'.

This species is not native in this fish in Lake Champlain. The same term are found in 'common sunfish' or 'pumpkinseed,' *malásikan* 'striped bass' or 'rock bass' on the Atlantic coast from the St. Lawrence. The smallmouth bass is not native in the headwaters of the Ottawa River northward to Lake Champlain, slightly north of Lake Nipissing (see Woods in northern Minnesota, Map 9).

51. PA **name·kwa* 'lake trout,' **name·kohsa* 'lake trout,' also *namaycush* (*Cristivomer namaycush*). The scientific term and at least in the Algonquian. In Maine the fish is this species alone, and all lar



49. PA **mi·twiya* 'quaking aspen, American poplar' (*Populus tremuloides*). F *mi·twiya* 'quaking aspen,' C and some Cw dialects *mi·tos* "poplar" (dimin.; PA **wi*>C *o* after a nonsyllabic; term probably refers to *P. tremuloides*), MSj *mi·toš* 'quaking aspen,' Malecite *mit* 'quaking aspen' (pl. *mitiyək*, with loss of postconsonantic *w*), N *meetwe* "poplar" (Genesis 30:37, Hosea 4:13; very probably refers to *P. tremuloides*).

None of the above languages show evident semantic change. However, Shawnee has *miitwaʔki* "red root willow" and *miitwaʔkiiθa* "water willow tree," both of which show reshaped or reformed endings and need more accurate species identification. The apparent change of meaning to "willow" in Shawnee is semantic change due to the early migration of the speakers of this language to regions south of the range of the quaking aspen, probably to the valleys of the Ohio and Cumberland rivers. The quaking aspen is a northern species, but it extends southward to occupy eastern and central Iowa, the northern halves of Illinois, Indiana, Ohio, Pennsylvania, and New Jersey, and the Appalachian Mountains south to southwestern Virginia as its southern limit. Although it is absent on the Great Plains, it extends southward in the Rocky Mountains to eastern Utah, Colorado, and northern New Mexico. The range of this species and the semantic change in Shawnee add some supporting evidence to the conclusions to be set forth.

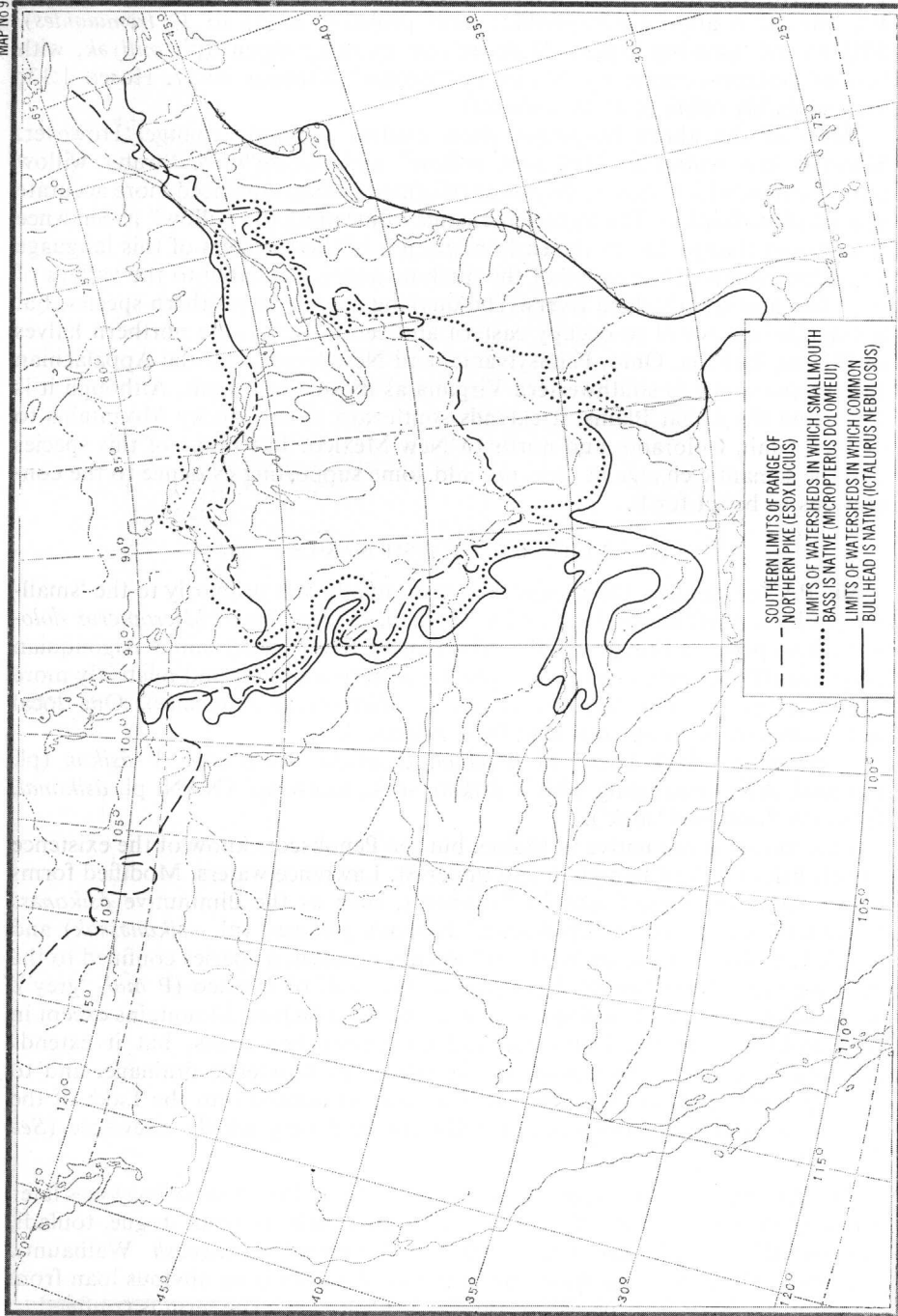
EVIDENCE OF FISH NAMES

50. PA **aʔšikanwa* 'black bass' (refers originally and primarily to the 'small-mouth bass, smallmouth black bass, achigan, or tiger bass,' *Micropterus dolomieu* Lacepède; although in the Mississippi River basin some Algonquian languages (Fox, and so on) also apply the term to a similar and relatively more southern species, the 'largemouth bass,' *Micropterus salmoides*). One local term, *achigan*, is an obvious loan from Algonquian.

F *ašikanwa* 'black bass,' M *aʔsekan*, O *aššikan*, S *aʔšika*, P *ásikan* (pl. *ásikanak* AN; contrasting with P *ásikan* 'sock, footwrap' INAN, pl. *ásikanal*, from PA **ašikanwi* 'sock').

This species is not native in Maine, but the Penobscots know of the existence of this fish in Lake Champlain and upper St. Lawrence waters. Modified forms of the same term are found in Penobscot, such as the diminutive *ásikanəss* 'common sunfish' or 'pumpkinseed,' *Lepomis gibbosus* (pl. *asikánəssak*) and *mólásikan* 'striped bass' or 'rockfish,' *Roccus saxatilis*, a species confined to the Atlantic coast from the St. Lawrence to the Gulf of Mexico (P *mól-* 'grey'). The smallmouth bass is not native east of the Appalachian Mountains except in the headwaters of the Ocmulgee and Chattahoochee rivers, but it extends northward to Lake Champlain, to the upper St. Lawrence drainage, and to slightly north of Lake Nipissing. It has been introduced into the Lake of the Woods in northern Minnesota and Ontario and very widely elsewhere (See Map 9).

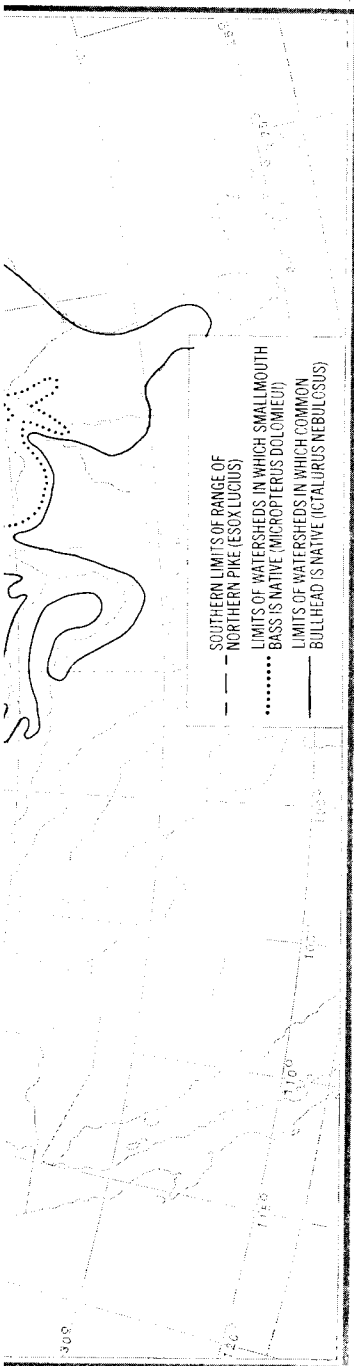
51. PA **name·kwa* 'lake trout,' and dimin. PA **name·kwehsa* ~ later **name·kohsa* 'lake trout,' also called 'lake charr, salmon trout, togue, touladi, namaycush' (*Cristivomer namaycush* or *Salvelinus namaycush* Walbaum). The scientific term and at least one of the local names is an obvious loan from Algonquian. In Maine the fish is usually called 'togue.' The term is confined to this species alone, and all languages agree.



This ancient species, one of the most common in North America, extending from the Arctic Circle. Its range lies south of the glacial limit. It is not found in the Pacific Northwest River basin or Vancouver cold lakes with rocky bottoms. Its distribution which calls for a more northern range in the Great Lakes; they are present but less common in Lake Erie and Lake Ontario, and reach their best development in Lake Superior. In Lake Superior the *namaycush siscowet* Agassiz form is common in the eastern portion of the lake. In Lake Minto in Ungava. Further north in the Mackenzie and Yukon rivers.

Therefore, we are largely dependent on the available where localities of occurrence. Available distributional data on the original presence of the lake trout follows: (1) Idaho: Henry Lake (Glacier County), Glen Lake in the same area; (3) Minnesota: Minnewanka Lake (near Barab Lake, Glacier Lake); (5) Michigan: (chiefly in the northern, deep water lakes) Mullet Lake (Lake County), Pokegama Lake (Itasca County); (7) southern Ontario: Rainy Lake, Opeongo Lake (in Algonquin Park) and a few other lakes in the northern part of the province; (10) Champlain; (11) southern Ontario: Tschitogama Lake, Chibougamau Lake (Addison County), Lake Minto, Bellwater Pond in Barton, Enfield, Stone Lake (Essex County); (12) Enfield, Mascoma Lake, Squaw Lake, Winisquam Lake (Belknap County), Wilton Pond (Franklin County), Sebec Lake, Haymock Lake, Stream Pond in Enfield (Penobscot County), Hill Pond, Tunk Lake (Hancock County), St. John River headwaters at the mouth of the river in southwestern New Brunswick.

The lake trout was introduced into Pennsylvania, about 1887, by the Pennsylvania Fish Commission.



This ancient species, one of the largest of freshwater fish, is confined to boreal North America, extending from the northern borders of the United States to the Arctic Circle. Its range lies almost entirely within the limits of the Pleistocene glaciation. It is not found in Newfoundland and is not native in the Columbia River basin or Vancouver Island. Since this fine fish occurs only in deep, cold lakes with rocky bottoms and in a few cold streams, it has an irregular distribution which calls for detailed investigation. Lake trout are found in all the Great Lakes; they are prevalent in lakes Huron, Michigan, and Superior but less common in Lake Erie where they are confined to the deeper eastern portion, and reach their best development in lakes Huron, Michigan, and Superior. In Lake Superior there is a special variety, the Siscowet (*Cristivomer namaycush siscowet* Agassiz), which is paler. The lake trout is more common in the eastern portion of Canada and is found as far north as Payne Lake and Lake Minto in Ungava. Further west it is less common, occurring sparsely in the Mackenzie and Yukon rivers.

Therefore, we are largely concerned with the southern portion of the range where localities of occurrence are scattered except for the five Great Lakes. Available distributional data are incomplete, but the facts ascertained as to the original presence of the lake trout in the southern part of its range are as follows: (1) Idaho: Henry Lake (Fremont County), (2) Montana: St. Mary Lake (Glacier County), Glenn Lake (Lincoln County), and a few other smaller lakes in the same area; (3) Alberta: Waterton Lake (in extreme southwest), Minnewanka Lake (near Banff), Lesser Slave Lake; (4) Saskatchewan: Swan Lake, Glacier Lake; (5) Manitoba: Lake Athapapuskow, Lake Winnipeg (chiefly in the northern, deeper part), West Hawk Lake; (6) Minnesota: Greenwood Lake (Lake County), Seagull Lake (Cook County), Trout Lake and Pokegama Lake (Itasca County), and a few other small lakes in the same area; (7) southern Ontario: Rainy River, Lake Nipigon, Lake Nipissing, Lake Simcoe, Opeongo Lake (in Algonquin Park); (8) Wisconsin: Trout Lake (Vilas County), and a few other lakes in the northern part, (9) Michigan: Lake Gogebic (Gogebic County), Manistique Lake (Mackinac County), and a few other lakes in the northern peninsula only; (10) New York: Cayuga Lake, Lake George, Lake Champlain; (11) southern Quebec: Lac des Neiges (in Laurentide Park), Tchitogama Lake, Chibougiche Lake, Lake Chibougamou, Obatogamau Lake, Betsiamites River, Restigouche River (Gaspé); (12) Vermont: Lake Dunmore (Addison County), Lake Memphremagog, Lake Willoughby, Caspian Pond, Bellwater Pond in Barton, Echo Pond, Glover Pond (Orleans County), Maidstone Lake (Essex County); (13) New Hampshire: Newfound Lake, East Pond in Enfield, Mascoma Lake, Squam Lake (Grafton County), Lake Winnepesaukee, Winisquam Lake (Belknap County); (14) Maine: Thompson Pond (Androscoggin County), Wilton Pond (Franklin County), Moosehead Lake, Schoodic Lake, Sebec Lake, Haymock Lake (Piscataquis County), Mattamiscontis Lake, Cold Stream Pond in Enfield (Penobscot County), Phillips Lake, Branch Pond, Beech Hill Pond, Tunk Lake (Hancock County), St. John and Allagash rivers, Eagle Lake (Aroostook County); (15) New Brunswick: headwaters of St. Croix River, St. John River headwaters above Grand Falls, Oromocto Lake, and other lakes in southwestern New Brunswick.

The lake trout was introduced into Eaglesmere Lake, Sullivan County, Pennsylvania, about 1887, but it is not native in any lake in that state. It is

absent in the central and southern districts of New England and is not found to any extent in the White Mountain region, Androscoggin waters, or Rangeley Lake area. It is not found in the interior of the lower peninsula of Michigan. In Wisconsin the lake trout is confined to Lake Michigan and a few small lakes in the northern part; it is wanting in Green Lake and lakes Wingra, Geneva, Mendota, and Pepin and absent in Lake Winnebago, which, despite its large size, is quite shallow. It is not found in Lake of the Woods, and occurs in only a few small lakes in the north-central portion of Minnesota (See Map 8).

M *name·koh* (dimin.; pl. *name·kohsak*), C and Cw *name·kos* (dimin.), MSj *name·kwoš* (dimin.), O *name·koss* (dimin.), A *namák*, P *námek^w* (pl. *námek^wak*; dimin. *námek^wəss*). A and P are the only languages that have preserved the term in its original non-diminutive form.

The word is of great antiquity and is a formative of the deverbal medial and noun-final PA **-ame·kw-* 'fish of a particular kind or species' plus the animate final ending **-a* and the prefix of universal existence PA **ne-* (as in PA **nepyi* 'water,' **na·pe·w-* 'male, man'). The term is paired with PA **name·wa* 'lake sturgeon' (*Acipenser fulvescens*), with the supporting forms F *name·wa*, M *name·w*, O *name·*, C and Cw *name·w*, but MSj *name·w* which in this dialect is applied to both the 'lake sturgeon' and 'Atlantic sturgeon' (*Acipenser oxyrhynchus* Mitchell), and there are no reflexes in the eastern Algonquian languages since the lake sturgeon is found only as far east as the upper St. Lawrence waters; it is formed from the contrasting noun-final PA **-ame·w-* 'fish,' the animate final **-a*, and the prefix **ne-*. From the same primary elements comes the diminutive PA **name·ʔsa* 'fish,' with quasi-diminutive PA **-eʔs-*, posited by F *name·sa*, M *name·ʔs*, C and Cw *name·s* ('fish' in Cw about James Bay, but 'small lake sturgeon' elsewhere), P *námehs*, Dm and D *namé·s*.

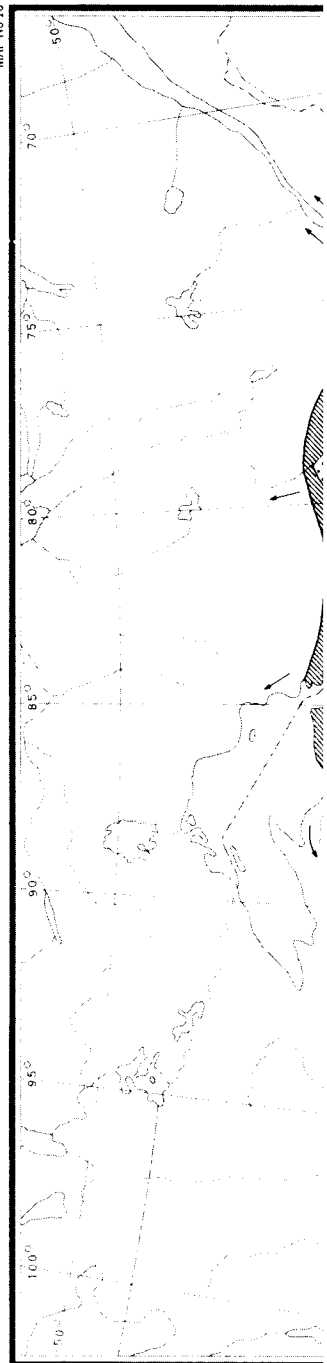
52. PA **kenwešye·wa* ~ later **kenošye·wa* 'northern pike' (*Esox lucius* Linnaeus).# This species is not native east of the Appalachian Mountains or south of the Ohio River.

F *keno·še·wa*, M *kenu·si·w*, C and Cw *kinose·w* ('pike' in Cw dialects south and west of James Bay, but generic 'fish' in C and all other Cw dialects), MSj and MSs *ěnoše·w*, O *kino·še·*, MI *kinoša* (pl. *kinošaki*), but P *k^wánose* 'chain pickerel' (*Esox niger* Le Sueur) (pl. *k^wánosak*; with metathesis of **w*, since the only clusters with second member *w* permitted in P are unit phoneme *k^w* and *-hw-*, only the former occurring in word initial). Otherwise PA **-we->*o* between nonsyllabics in late PA times after the separation of the eastern Algonquian languages, as shown in PA **eškwete·wi* ~ **eškote·wi* 'fire,' F *aškote·wi*, C *iskote·w*, O *iškote·*, but P *sk^wâte*.

Concerning late PA **kenošye·wa*, only C, Cw, and MS preserve the original short **o* < **-we-* between consonants, whereas F, M, and O show a secondary lengthening of the vowel to *o·* which occurs elsewhere in the second syllables of words in these languages. The contracted stem **kenošye·w-* was in phonemic contrast with PA **keno·šye·-* 'willow' (see example no. 48), and when lengthening occurred in the M form, the M term for 'willow' was reshaped or reformed with a new noun-final *-ekap·aweh*.

Semantic changes have taken place with some departures from the original meaning 'northern pike.' The Penobscot transferred the term to a very similar species when they migrated beyond its habitat, and most Cree dialects have generalized the meaning to 'fish' (See Map 9).

MAP No 10



...w England and is not found
 ...oscoggin waters, or Rangeley
 ...lower peninsula of Michigan.
 ...Michigan and a few small lakes
 ...e and lakes Wingra, Geneva,
 ...b, which, despite its large size,
 ...ods, and occurs in only a few
 ...sota (See Map 8).

...and Cw *name·kos* (dimin.),
 ...A *namák^w*, P *námek^w* (pl.
 ...only languages that have pre-

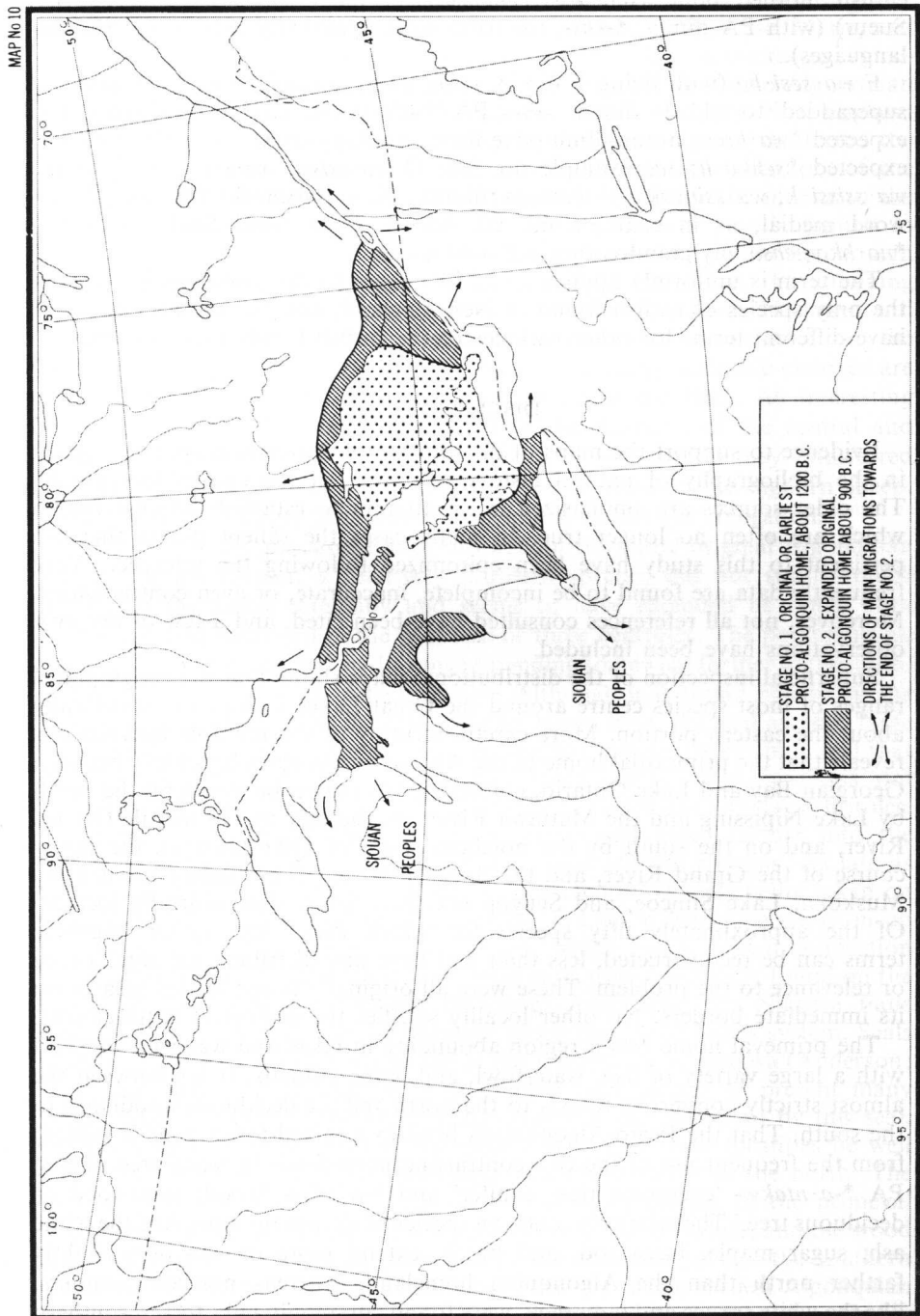
...e of the deverbial medial and
 ...l or species' plus the animate
 ...nce PA **ne-* (as in PA **nepyi*
 ...red with PA **name·wa* 'lake
 ...rting forms F *name·wa*, M
 ...*name·w* which in this dialect
 ...tic sturgeon' (*Acipenser oxy-*
 ...the eastern Algonquian lan-
 ...ast as the upper St. Lawrence
 ...inal PA **-ame·w-* 'fish,' the
 ...ame primary elements comes
 ...iminutive PA **-e?s-*, posited
 ...sh' in Cw about James Bay,
 ...n and D *namé·s*.

...northern pike' (*Esox lucius*
 ...Appalachian Mountains or

...w ('pike' in Cw dialects south
 ...d all other Cw dialects), MSj
 ...*nošaki*), but P *k^wánose* 'chain
 ...h metathesis of **w*, since the
 ...P are unit phoneme *k^w* and
 ...). Otherwise PA **-we->*o*
 ...e separation of the eastern
 ...*ete·wi~*eškote·wi* 'fire,' F

...and MS preserve the original
 ...M, and O show a secondary
 ...where in the second syllables
 ...*kenošye·w-* was in phonemic
 ...ample no. 48), and when
 ...n for 'willow' was reshaped

...departures from the original
 ...ed the term to a very similar
 ...and most Cree dialects have



53. PA **wa·hsywa* and dimin. PA **wa·hsehsywa* 'brown bullhead, eastern catfish, horned pout' (*Ictalurus nebulosus*, or older *Ameiurus nebulosus* Le Sueur) (with PA dimin. *-*ehs*-, the form more commonly used in the various languages).

F *wa·sesi·ha* (with living F dimin. -*i·h*-, as in examples no. 6, 10, and 27, superadded to old F dimin. -*es*-<PA *-*ehs*-); M *wa·sew* (reshaped, for expected **wa·hsew*, a non-diminutive form, similarly to M *seko·h* 'weasel' for expected **sehko·h*; see example no. 36); O *wa·ssissi*, *wa·ssi* ~ (dimin.; pl. *wa·ssissi·k*, *wa·ssinyak*); P *wásasso* (dimin.; pl. *wásassəwak*; PA **hs*>P *s* in word medial, as in example no. 20, but >P *ss* in word final, as in PA **no·hkomehsa* 'my grandmother' >P *nòhkəməss*).

The term is uniformly applied in all languages to the same species. This is the only species of catfish found in New England, and the central languages have different terms for other varieties of the catfish family (See map 9).

DISCUSSION

Evidence to support the maps of distribution of the various species is given in the bibliography of natural history references at the end of this article. The older sources are emphasized in an attempt to establish original ranges which are often no longer true. In many cases the salient points that are pertinent to this study have been epitomized following the reference. Very frequently data are found to be incomplete, inaccurate, or even contradictory. Moreover, not all references consulted have been cited, and a few of my own observations have been included.

Superficial inspection of the distributional maps shows that the geographical ranges of most species centre around the Great Lakes region, and specifically about the eastern portion. More careful scrutiny of the multiple intersections reveals that the primordial home of the Algonquian peoples lay chiefly between Georgian Bay and Lake Ontario, embracing the region bordered on the north by Lake Nipissing and the Mattawa River, on the east by the middle Ottawa River, and on the south by the northern shore of Lake Ontario, the upper course of the Grand River, and the Saugeen River. The districts about Lake Muskoka, Lake Simcoe, and Scugog and Rice lakes were centrally located. Of the approximately fifty species for which Proto-Algonquian linguistic terms can be reconstructed, less than half have any distributional significance or relevance to the problem. These were all originally found in this area or on its immediate borders. No other locality satisfies the ecological requirements.

The primeval home was a region abounding in lakes and was well supplied with a large variety of fish, waterfowl, and game animals. It lay between the almost strictly coniferous forests to the north and the deciduous woodlands to the south. That the Proto-Algonquians lived in a mixed-forest zone is evident from the frequent use of the two contrasting noun-finals in many tree names, PA *-*a·ntakw*- 'evergreen tree, conifer' and *-*a·xkw*- 'wood; hardwood or deciduous tree.' The relatively southern species of deciduous trees, like the white ash, sugar maple, basswood, and beech, extend more or less only slightly farther north than the Algonquian homeland, whereas northern conifers, like the white spruce and tamarack, were found commonly only to the southern borders of the original home or slightly beyond.

The original home lay at extended into the upper Ottawa and Lake Nipissing, and was the northern part of the lowland what farther southward an residence. When the ancestral Algonquians migrated southward term for that animal to the Miami in their southward migration deer. In the east of North America deciduous forests and was the 'Urheimat' in extreme southern regions of western New York and northern Ohio and Indiana. Algonquian languages of the north to be expected regarding the example is provided in the southern Plains migrated from the Proto-Algonquian term. Both beasts have large, prominent

The raccoon and porcupine home, but the former, a resident farther to the north originally northward and westward in an essentially northern animal, had

The harbour seal is of species shores of both oceans and the rivers for long distances above is common on the eastern side ascends the St. Lawrence water. However, in aboriginal times interior along the upper St. Lawrence the nineteenth century there Lake Champlain (Kirk; Miller) Onondaga Lake near Syracuse with Lake Ontario (Miller). The shores of Lake Ontario (Downing) served as a barrier to further also ascended the Ottawa River (Downing), where the Chauvin inland lakes throughout the but the distributions of marine outside any possible original harbour seal, therefore, was Algonquian home; the range bison show that the northern peninsula of Michigan could residence. The western half of the woodland caribou and

va 'brown bullhead, eastern
lder *Ameiurus nebulosus* Le
ommonly used in the various

examples no. 6, 10, and 27,
M *wa·sew* (reshaped, for
rly to M *seko·h* 'weasel' for
ssissi, *wa·ssi* ~ (dimin.; pl.
vásassəwak; PA **hs* > P *s* in
s in word final, as in PA

to the same species. This is
l, and the central languages
ish family (See map 9).

f the various species is given
s at the end of this article.
to establish original ranges
the salient points that are
llowing the reference. Very
urate, or even contradictory.
cited, and a few of my own

shows that the geographical
akes region, and specifically
of the multiple intersections
n peoples lay chiefly between
egion bordered on the north
e east by the middle Ottawa
of Lake Ontario, the upper
er. The districts about Lake
akes were centrally located.
Proto-Algonquian linguistic
ny distributional significance
ally found in this area or on
the ecological requirements.
akes and was well supplied
animals. It lay between the
l the deciduous woodlands to
mixed-forest zone is evident
n-finals in many tree names,
·*xkw*- 'wood; hardwood or
deciduous trees, like the white
more or less only slightly
whereas northern conifers,
ommonly only to the southern

The original home lay at the southern limit of the woodland caribou, which extended into the upper Ottawa valley just to the south of the Mattawa River and Lake Nipissing, and westward to Manitoulin Island, Sault Ste. Marie, and the northern part of the lower peninsula of Michigan. The moose ranged somewhat farther southward and occupied all the area of the Proto-Algonquian residence. When the ancestors of the Delawares and southern New England Algonquians migrated south of the range of the caribou they transferred the term for that animal to the deer, and correspondingly the ancestors of the Miami in their southward movement applied the term for the moose to the deer. In the east of North America the wood bison was largely limited to deciduous forests and was found on the southern borders of the Algonquian 'Urheimat' in extreme southern Ontario, more plentifully in the adjoining regions of western New York, and on the flatlands of southern Michigan and northern Ohio and Indiana. Insufficient information is available on the Algonquian languages of the western Plains, but many semantic changes are to be expected regarding the terminology of fauna and flora. An interesting example is provided in the fact that when the Arapaho of the central and southern Plains migrated far from the range of the caribou they transferred the Proto-Algonquian term for the woodland caribou to the bighorn sheep. Both beasts have large, prominent horns and a similar fur coloration.

The raccoon and porcupine lived throughout the entire original Algonquian home, but the former, a relatively southern species, did not subsist much farther to the north originally and seems to have extended its range both northward and westward in the past two or three centuries. The porcupine, an essentially northern animal, had a range extending somewhat farther to the south.

The harbour seal is of special interest. Although it is found chiefly on the shores of both oceans and the Hudson and James bays, the seal ascends large rivers for long distances above tidewater. The harbour seal is the only seal that is common on the eastern coast of the United States. At present this seal ascends the St. Lawrence waterway only as far as Tadoussac and Trois Pistoles. However, in aboriginal times its ascent penetrated much farther into the interior along the upper St. Lawrence River and affluent streams. As late as the nineteenth century there are three or four records of seals being taken on Lake Champlain (Kirk; Miller; Thompson) and on at least one occasion on Onondaga Lake near Syracuse, New York, which has a stream connection with Lake Ontario (Miller). In former times seals were commonly found on the shores of Lake Ontario (DeKay; Downing; Anderson), but Niagara Falls served as a barrier to further penetration along the Great Lakes system. Seals also ascended the Ottawa River as far as the present city of Ottawa (Anderson; Downing), where the Chaudière Falls limited their range. At present many inland lakes throughout the Hudson Bay drainage are inhabited by this seal, but the distributions of many other species show that these localities lie well outside any possible original Algonquian homeland so far in the north. The harbour seal, therefore, was found on the southern margin of the primeval Algonquian home; the ranges of the harbour seal, the bobwhite, and the wood bison show that the northern peninsula or the northern part of the southern peninsula of Michigan could not have been the site of the earliest Algonquian residence. The western half of New York State is eliminated by the absence of the woodland caribou and of the white spruce.

Of the four species of fishes definitely known to the Proto-Algonquians, all are freshwater varieties. The northern pike is widespread in its distribution and therefore provides the least information. It is not found as a native fish in the Atlantic watershed south of the St. Lawrence drainage and is absent south of the Ohio River. When the ancestors of the Abenaki-Penobscot migrated to the east they transferred the term for this fish to a very similar species, the chain pickerel. The lake trout, a favourite fish of the early Algonquians, is not found south of the Great Lakes, Cayuga Lake, Lake George, and Lake Winnepesaukee. It is found in only a few inland lakes of northern Wisconsin, the upper peninsula of Michigan, and northern Minnesota, and it reaches its maximum development in the waters of Lake Huron. The brown bullhead prefers warm water that is muddy or shallow, and consequently it is most abundant in the lakes and ponds of southern Ontario. Its northern range extends to a line south of Sault Ste. Marie, Lake Nipissing, the Mattawa River, and the Ottawa River south of Mattawa. The smallmouth black bass has a very similar range to the brown bullhead, except that it extends northward to slightly beyond Lake Nipissing and does not occur east of the Appalachian Mountains except for the headwaters of some streams in upper Georgia and western North Carolina. The distributions of these fishes provide additional reasons for pinpointing the earliest Algonquian residence to southern Ontario rather than to a more western portion of the Great Lakes region.

For the sake of discussion, alternative areas must be examined as possible locations of the primordial Algonquian home. No part of the Atlantic coast east of the Appalachians merits consideration except possibly northern New England and New Brunswick. However, these regions are not satisfactory because of the absence of the smallmouth bass, the northern pike, the wood bison, and the bobwhite. The only other area requiring serious consideration besides southern Ontario is northern New York State, comprising a region bounded on the north by the St. Lawrence River and the lower Ottawa River, on the east by the Green and Berkshire mountains, on the south by the Mohawk River, and on the west by Lake Ontario and lakes Oneida and Onondaga, and including Lake George and Lake Champlain. All species that have reconstructible linguistic terms are found in either the northern or southern districts of this area except the wood bison and the woodland caribou. That the wood bison was found on its western borders suffices for this requirement. However, there are several weighty objections against this conjecture. First, the nearest caribou were a few strays from Maine in extreme northeastern Vermont; essentially caribou ranged considerably outside the area under consideration. Second, the Oldsquaw was rare in this area and appeared as an uncommon migrant only on the eastern shores of Lake Ontario. Finally, the region does not form a cohesive geographical, topographical, or ecological unit; the northern and southern portions are quite distinct with intervening high mountainous areas connected only by the Lake Champlain and St. Lawrence waterways.

SUMMARY

In order to allow for possible undetermined changes in the distribution of fauna and flora in the prehistoric period, and partly in order to account for alternative interpretations of the linguistic facts themselves, the earliest original

home is diagrammatically an expanded area of occupation the entire Algonquian home; these the tentative dates of as suppositions to serve as estimates for the times of of the history of the Algonquians at present. The directions of Number 2 are indicated on the map who by preference pursued the west while those who preferred the east migrated to the south, south of the Montagnais, and Naskapi.

There is no proof that the uniform mode of speech or antiquity. An expanded area of PA words for some months may be of slightly later date fluctuating forms for such species lends support to this concept.

About fifty natural history language. These are reconstructed and systematic patterning survive in the various descriptions. The western or Plains languages data are available. Doubtless escaped attention, and others or because they are unrecognized.

Fortunately many terms most languages without change transparent semantic change of Algonquian speakers beyond can be accurately inferred agreement. In this manner a trees, and fish known to projection from the linguistic of these, however, have given to be relevant to this study terms denote species that have distributions to contribute under consideration. The of earliest European contact recorded on maps to determine prehistoric times because of

to the Proto-Algonquians, widespread in its distribution, not found as a native fish in the drainage and is absent from the Abenaki-Penobscot region. This fish is very similar to the smallmouth black bass, a favourite fish of the early Algonquians, found in Cayuga Lake, Lake Ontario, and only a few inland lakes of the north, and northern Minnesota, and the waters of Lake Huron. The fish is more common in the shallower waters of the southern Ontario. Its northern limit is the Nipissing, the Mattawa, and the Mattawa. The smallmouth black bass, except that it extends northward, does not occur east of the western limit of some streams in upper Ontario. The distribution of these fishes provides evidence of Algonquian residence to southern Ontario and the Great Lakes region.

It must be examined as possible evidence of the Algonquian migration from the Atlantic coast eastward to the northern New England region. This is not satisfactory because of the absence of the wood bison, and the consideration besides southern Ontario of a region bounded on the west by the Mattawa River, on the east by the Mohawk River, and on the north by the Onondaga, and including the western Algonquian reconstructible linguistic districts of this area except the wood bison was found in the western limit. However, there are several examples where the nearest caribou were a few miles from the western limit; essentially caribou migration. Second, the Oldsquaw River is a migrant only on the eastern limit. The western and southern portions are connected only by the

variations in the distribution of the fish in order to account for themselves, the earliest original

home is diagrammatically represented as Stage Number 1 (See Map 10) and an expanded area of occupancy of slightly later date, which certainly includes the entire Algonquian homeland, is characterized as Stage Number 2. To these the tentative dates of 1200 B.C. and 900 B.C., respectively, are assigned as suppositions to serve as a basis for further discussion. The hypothetical estimates for the times of these two periods are based only on impressions of the history of the Algonquian languages as a whole, so far as it is known at present. The directions of the main streams of migration subsequent to Stage Number 2 are indicated on the map. At this period those speakers of Algonquian who by preference pursued the caribou went northward or to the northwest, while those who preferred to earn part of their livelihood by hunting bison migrated to the south, southwest, and southeast. The ancestors of the Cree, Montagnais, and Naskapi were certainly among the former.

There is no proof that the Proto-Algonquian language was ever an absolutely uniform mode of speech or that all terms labelled as PA are necessarily of equal antiquity. An expanded early home may more readily account for the existence of PA words for some more marginal species, and therefore these archetypes may be of slightly later date. The apparent reality of linguistic doublets and fluctuating forms for such species as the Golden Eagle, Nighthawk, and others, lends support to this concept.

CONCLUSION

About fifty natural history terms are determined in the Proto-Algonquian language. These are reconstructed, using principles of uniform sound change and systematic patterning of phonetic correspondence, from the forms that survive in the various descendent eastern and central Algonquian languages. The western or Plains languages are disregarded largely because inadequate data are available. Doubtlessly there are some natural history names that have escaped attention, and others are omitted because of insufficient information or because they are unrecorded in both the eastern and central languages.

Fortunately many terms refer to a particular species and are found in all or most languages without change in meaning. In other examples only minor and transparent semantic changes have occurred because of the migration of a body of Algonquian speakers beyond the range of the species. The original designation can be accurately inferred from the group of the other languages in perfect agreement. In this manner a considerable number of species of birds, mammals, trees, and fish known to the Proto-Algonquian people are determined by projection from the linguistic archetypes that can be reconstructed. Numbers of these, however, have generic significance or have ranges that are too extensive to be relevant to this study. On the other hand, about twenty reconstructible terms denote species that have sufficiently characteristic and limited geographical distributions to contribute valuable information germane to the problem under consideration. The original ranges of these species during the period of earliest European contact are investigated so far as is feasible and are recorded on maps to determine foci of intersection. Alterations of range in prehistoric times because of climatic or other conditions remain an uncontrolled

factor conducive to error, but these alterations are believed to be trivial when they are compared to the enormous changes that have taken place since the advent of Europeans.

The earliest residence of the speakers of Proto-Algonquian is ascertained by the multiple intersections of the distributional lines of significant species. The original home of the Algonquian peoples lay in the region between Lake Huron and Georgian Bay and the middle course of the Ottawa River, bounded on the north by Lake Nipissing and the Mattawa River and on the south by the northern shore of Lake Ontario, the headwaters of the Grand River, and the Saugeen River.

NOTES

- 1 Harper, Francis. "Changes in Climate, Faunal Distribution, and Life Zones in the Ungava Peninsula," *Polar Notes*, Dartmouth College Library, Hanover, N.H., no. III, Nov. 1961. Also, Peterson, Randolph L. "North American Moose," p. 46, fig. 8, Toronto, 1955.
- 2 Abbreviations used are as follows: PA for Proto-Algonquian, F for Fox, C for Plains Cree, Cw for Swampy or Woodland Cree, M for Menomoni, MSj for Lake St. John dialect of Montagnais, MSs for Montagnais of Seven Islands, O for Ojibwa, S for Shawnee, MI for Miami, D for Unami dialect of Delaware, Dm for Munsee dialect of Delaware, N for Natick or more properly Massachusetts, P for the Penobscot dialect of Abenaki, A for St. Francis dialect of Abenaki; * indicates reconstructed form, ≠ marks glosses with semantic change, ~ varies or alternates with, pl. for plural, dimin. for diminutive, < is derived from historically.
- 3 Fox forms cited were collected by myself from Horace Whitebreast and Daniel Youngbear of Tama, Iowa, in September 1962. The published texts of Jones and Michelson show a paucity of natural history terms.
- 4 Munsee terms were collected from Nicodemus Peters in June 1938, at Smoothtown, Six Nations or Grand River Reserve, Ontario.
- 5 Collected in July 1934 (from Andrew Gunner), and in August 1963 and September 1964 from Gabriel Kurtness and Marie Raphael.
- 6 From many informants at intervals from August 1932; chiefly Andrew Dana, Newell Gabriel, Louis Lolar, Sylvia and Francis Stanislaus, Emma Nicoliar Ranco.
- 7 Bloomfield, Leonard. The Menomoni language, New Haven (Yale Univ. Press), 1962. Also, Menomoni texts, (Pub. of The Am. Ethnol. Soc., vol. 12), New York, 1928.
- 8 Bloomfield, L. Eastern Ojibwa (Univ. of Michigan Press), Ann Arbor, 1958.
- 9 Baraga, Frederic. Dictionary of the Ojibwa language, Cincinnati (first ed.), 1853.
- 10 Bloomfield, L. Sacred stories of the Sweet Grass Cree, Bull. 60, Nat. Mus. Canada, Ottawa, 1930.
- 11 Lacombe, A. Dictionnaire et grammaire de la langue des Cris, Montreal, 1874.
- 12 Watkins, E. A. A dictionary of the Cree language (2nd ed. by R. Faries), Toronto, 1938.
- 13 Voegelin, C. F. Shawnee stems and the Jacob P. Dunn Miami dictionary (Indiana Hist. Soc., vol. 1, parts 8-10), Indianapolis, 1939-40.
Additional Shawnee forms are taken from some typed notes supplied me by Voegelin.
A few liberties have been taken with the Miami forms in order to standardize the orthography, such as changing Dunn's *ā* to *e*, *d* to *t*, and *z* to *s*.
- 14 Day, Gordon M. A St. Francis Abenaki vocabulary, Int. J. of America. Ling., 30: 371-392, 1964.
- 15 Bloomfield, Leonard. Algonquian. In H. Hoijer, Linguistic Structures of Native America, Viking Fund Pub. in Anthropol., no. 6, New York, 1946; p. 85-129.
In PA reconstructions, ? replaces Bloomfield's *q* for the glottal stop phoneme; and PA **sk* is used to replace Bloomfield's **çk*, since no **sk* is otherwise provided for, and Ojibwa and Natick have *sk* as a reflex of PA **sk*; and **Xk* is used to represent a discrepant consonant cluster ending in *-*k*, which is not to be confused with the regular correspondence **xk*.
A few Arapaho terms are from Salzmänn, Zdeněk. Arapaho V: noun, Int. J. of America. Ling., 31: 39-49, 1965; as well as a few Arapaho notes which I collected in July 1935 from Oscar Grasshopper at Ethete, Wyoming.
- 16 The latter seems possible since M has *ape·hsahkyah* "brant" also.
- 17 In the Montagnais of Lake Mistassini and of Seven Islands (Moisie), *iline·w* is 'Spruce Partridge.'
- 18 Reconstructed from Dunn's *wäsänza* (p. 429) and Volney's *ahouëhsensa* 'bird.'
- 19 Correcting Bloomfield, *Language*, vol. 1, p. 155 (Dec. 1925).

I. General

- HARMON, DANIEL W. A journal of the
Andover (Flagg and G...
[*Elm* and *basswood* c...
land caribou about L...
Lake (p. 168), and A...
Saskatchewan and P...
- HARPER, FRANCIS. Change...
Peninsula. Polar Notes
1961.
- URQUHART, FREDERICK A.
Mus., Toronto (1957).
[Excellent articles or
including one by L...
p. 26-42.]

II. Birds

- BENT, ARTHUR C. Life hi...
Mus., Bull. 167, Wash...
[Nesting range of G...
Alaska (Ft. Yukon...
Island); in the *easi*...
Conway (N.H.), We...
Va.), western North...
land, and Chilhowe...
Nueva Leon, Sonora...
Ranier and Cascac...
Montana, Arizona,
Santa Barbara.]
- BENT, ARTHUR C. Life h...
Bull. 174, Washington...
[*Northern Pileated*...
Lake, south to south...
- BROUN, MAURICE. Hawk...
[*Golden Eagle* at H...
migration during au...
Eagles at this localit...
- CHECK-LIST OF NORTH AM...
Ornithologists' Union,
[*Oldsquaw* (p. 87), N...
Parry Islands, Ellesm...
to northwestern Brit...
west shore of Hudsc...
in North America...
Labrador south on...
Great Lakes (but o...
coast to southern W...
Golden Eagle (p. 11)...
Ontario, and Quebe...
Nova Scotia (Colcl...
Mass., and the mou...
Tennessee, and so...
including western T...
and western South a...

NATURAL HISTORY REFERENCES

I. General

HARMON, DANIEL W. A journal of voyages and travels in the interior of North America. Andover (Flagg and Gould), 1820.

[*Elm* and *basswood* on upper and lower Red River (p. 140-141); *moose* and *wood-land caribou* about Lake Nipigon (p. 159), Sturgeon Lake (p. 160), Isle a la Crosse Lake (p. 168), and Athabasca River (p. 170); *wood buffalo* along and between the Saskatchewan and Peace rivers (p. 416).]

HARPER, FRANCIS. Changes in climate, faunal distribution, and life zones in the Ungava Peninsula. Polar Notes, Occas. Pub. of the Stefansson Coll., Hanover (N.H.), no. 3, 1961.

URQUHART, FREDERICK A. Changes in the fauna of Ontario. Contrib. of the Roy. Ont. Mus., Toronto (1957).

[Excellent articles on the changes of the ranges of birds and mammals in Ontario, including one by L. L. Snyder on the "Changes of the Avifauna of Ontario," p. 26-42.]

II. Birds

BENT, ARTHUR C. Life histories of North American birds of prey. Pt. I, U.S. Nat. Mus., Bull. 167, Washington, 1937.

[Nesting range of *Golden Eagle* given (p. 293-315); extending in the *north* from Alaska (Ft. Yukon and Pt. Barrow) across to Quebec (Ft. Chimo and Anticosti Island); in the *east* to Nova Scotia, Maine (Sandy River Mountain), North Conway (N.H.), West Point (N.Y.), Appalachian Mountains (N.J., Pa., W. Va., Va.), western North Carolina (Weaverville), eastern Tennessee (Le Conte, Cumberland, and Chilhowee Mountains); in the *south* to northern Mexico (Chihuahua, Nueva Leon, Sonora, and Lower California); and in the *west* to Washington (Mt. Ranier and Cascade Mountains), Oregon (Ft. Klamath); most frequent in Montana, Arizona, and wilder portions of southern California (San Diego and Santa Barbara).]

BENT, ARTHUR C. Life histories of North American Woodpeckers. U.S. Nat. Mus., Bull. 174, Washington 1939.

[*Northern Pileated Woodpecker* (p. 171-189) breeds in *north* from Great Slave Lake, *south* to southern Pa. and W. Va., and southern Illinois and Missouri.]

BROWN, MAURICE. Hawk Mountain sanctuary. Nature Magazine 27:367-368, 1936.

[*Golden Eagle* at Hawk Mountain sanctuary, near Dreherstown, Pa., chiefly in migration during autumn. During the year 1935, counted 66 individual Golden Eagles at this locality.]

CHECK-LIST OF NORTH AMERICAN BIRDS. Prepared by a Committee of the American Ornithologists' Union, 5th ed., Baltimore, 1957.

[*Oldsquaw* (p. 87), North American breeding range from both coasts of Greenland, Parry Islands, Ellesmere Island, and the Arctic coasts of Alaska and Canada, south to northwestern British Columbia (White Pass), northern Manitoba (Churchill on west shore of Hudson Bay), and southern Labrador (Strait of Belle Isle); winters in North America on the Atlantic from southern Greenland and southern Labrador south on the Atlantic coast to South Carolina, centrally chiefly on the Great Lakes (but occasionally to Kentucky and Tennessee), and on the Pacific coast to southern Washington (occasionally to southern California).

Golden Eagle (p. 112) breeding range extends on the *north* from Alaska, northern Ontario, and Quebec (Ft. Chimo, Anticosti Island, and Gaspé); on the *east* to Nova Scotia (Colchester Island), northern Maine and N.H., Vt. and western Mass., and the mountains of Pa., W. Va., Va., western North Carolina, eastern Tennessee, and southern Ontario; *west* to California and northern Mexico, including western Texas, western Oklahoma, western Kansas, western Nebraska, and western South and North Dakota.

- Ruffed Grouse* (p. 128) resident in *north* from central Alaska, southern MacKenzie (south of Great Slave Lake), northern Ontario (south and west of James Bay), to southern Labrador (south of Hamilton Inlet); *east* to Nova Scotia and New Jersey; *south* in the Appalachians (northeastern Virginia, western North and South Carolina, northern Georgia, northeastern Alabama) to Tennessee and central Arkansas; and *west* to eastern Kansas, eastern Nebraska, central Iowa, and southern Minnesota, to western South Dakota, Wyoming, and Alberta.
- Bobwhite* (p. 140) resident in the *north* from eastern South Dakota, southern Minnesota, southern Wisconsin, southern Michigan, southern Ontario (Toronto, Port Hope), central New York, southern Vt. and N.H., to southwestern Maine (Fryeburg); *south* to northern Florida (Palatka, Gainesville), and the Gulf Coast of Louisiana; *west* to eastern Texas, Arkansas, northeastern Kansas, and eastern Nebraska.
- Northern Pileated Woodpecker* (p. 315) breeds in the *north* from extreme northeastern British Columbia, southern MacKenzie (south of Great Slave Lake), southern Manitoba, northern Ontario, central Quebec, and Anticosti Island; *east* to New Brunswick, Nova Scotia, western and central Massachusetts, western Connecticut, central New Jersey, and south-central Pennsylvania (not in southeastern portion); *south* to northeastern Ohio, northern Indiana and Illinois, and northern Missouri; and *west* to northeastern Kansas, Iowa, Minnesota, and western Alberta.
- Southern Pileated Woodpecker* resident from southeastern Kansas, central Missouri, southern Indiana, Kentucky, W. Va., Maryland, and southeastern Pennsylvania, south to Georgia, northern Florida, and the Gulf Coast; *west* to eastern Oklahoma.
- Northern Raven* or *Common Raven* (p. 377) ranges in North America on the *north* from Greenland, northern Canada, and subarctic Alaska; *south* to North Dakota and in Rocky Mountains to Mexico and Nicaragua, to Minnesota, Wisconsin, northern Michigan, central Ontario, southern Quebec, and Maine (including coast), and south in the Appalachian Mountains to northwestern Georgia.]
- CHAPMAN, FRANK M. Handbook of birds of eastern North America. 6th ed., New York, 1904.
- DEKAY, JAMES E. Zoology of New York, or the New York fauna. Pt. II, Birds; Albany (Carroll and Cook), 1844.
[*Golden Eagle* (p. 4), highlands of Hudson River, Lake Erie; *Pileated Woodpecker* (p. 184-185), "almost unknown in Atlantic district" of N.Y.; *Northern Raven* (p. 134), rare except in northern New York State; *Bobwhite* (p. 202-203), most of New York State and Mass.]
- GODFREY, W. E., and A. L. WILK. Birds of the Lake St. John region, Quebec. Nat. Mus. Canada, Bull. 110, Ottawa, 1948.
- GRINNELL, JOSEPH. The designation of birds' ranges. Auk 44:322-325, 1927.
- GYLES, JOHN. Memoirs of odd adventures, strange deliverances, etc., in the Captivity of John Gyles, Esq. Boston (S. Kneeland and T. Green), 1736.
[For the year 1689 describes (p. 23) the *Golden Eagle* nesting on Mt. Katahdin and in the upper Penobscot Valley, Maine.]
- HARPER, FRANCIS. Birds of the Ungava Peninsula. Univ. of Kansas Mus. Nat. Hist., Misc. Pub. no. 17, Lawrence (Kansas), 1958.
- KNIGHT, ORA W. The birds of Maine. Bangor, 1908.
- PETERSON, ROGER T. A field guide to the birds. 2nd revised ed., Cambridge (Houghton Mifflin), 1959.
- SNYDER, L. L. On the distribution of the Golden Eagle in eastern Canada. Canadian Field-Naturalist 66: 39-41, 1949.
[Gives data on the Golden Eagle nesting on the upper Hamilton River and at the head of Lake Michikamau (Mishikamou) in Labrador, on the Koksoak River near Ft. Chimo and at the juncture of the Larch and Kaniapiskau rivers in extreme northern Quebec, on Coats Island in northern Hudson Bay, and at Repulse Bay in extreme northeastern Keewatin.]

SPOFFORD, WALTER R. Nest
Canadian Field Naturalist
[Gives data on the Go
coast of the Ungava P

TAVERNER, P. A. Birds of e

III. Mammals

- ANDERSON, RUDOLPH M. C
Bull. 102, Ottawa, 1946
[*Harbour seal* (*Phoca*
River at the mouth of
a few records in Lake
Gmelin) recorded (p.
Quebec, and Ontario;
(*Bison bison bison* Lin
vanicus Shoemaker), v
found in northern Alb
- BARTRAM, WILLIAM. Travel
West Florida. Philadelph
[In the year 1773 visit
saline deposit on the
Georgia (p. 35, 39); bu
day to be seen in this p
(p. 322) "heaps of whi
- BURT, WILLIAM H., and RIC
Cambridge (Houghton M
- CAMERON, AUSTIN W. Mam
Natural History of Cana
[Gives present range
Pistoles.]
- DEKAY, JAMES E. Zoology
Albany (White and Viss
[*Harbour seal* (p. 53-55
County, N.Y.; also In
Ontario; also New Yc
- DOUTT, J. KENNETH. A rev
29: 61-126, 1942.
[*Harbour seal* in Seal]
- DOWNING, STUART C. A pi
Mus. of Zool., Misc.]
[*Woodland caribou* (p.
Nipissing"; *harbour s*
Lake Ontario and the
- FILSON, JOHN. The discove
(James Adams), 1784.
[Account of the wood
- HALL, E. RAYMOND, and K
York (Ronald Press), 19
[Maps of distribution
caribou (all species an
caribou, p. 1019), and
- HARPER, FRANCIS. Land ar
Kansas, Mus. Nat. Hist
- JONES, REV. DAVID. A jour
side of the River Ohio,
[Account of the wood
the Ohio River near t

- central Alaska, southern MacKenzie (south and west of James Bay), (t); east to Nova Scotia and New Virginia, western North and ern Alabama) to Tennessee and eastern Nebraska, central Iowa, ota, Wyoming, and Alberta.
- eastern South Dakota, southern igan, southern Ontario (Toronto, and N.H., to southwestern Maine , Gainesville), and the Gulf Coast northeastern Kansas, and eastern
- in the north from extreme northie (south of Great Slave Lake), l Quebec, and Anticosti Island; nd central Massachusetts, western ntral Pennsylvania (not in south- northern Indiana and Illinois, and Kansas, Iowa, Minnesota, and
- n southeastern Kansas, central /a., Maryland, and southeastern ida, and the Gulf Coast; west to
- ges in North America on the north ic Alaska; south to North Dakota aragua, to Minnesota, Wisconsin, i Quebec, and Maine (including s to northwestern Georgia.]
- rn North America. 6th ed., New York fauna. Pt. II, Birds; Albany ; Lake Erie; *Pileated Woodpecker* istrict" of N.Y.; *Northern Raven* tate; *Bobwhite* (p. 202-203), most
- ke St. John region, Quebec. Nat. . Auk 44:322-325, 1927.
- eliverances, etc., in the Captivity Green), 1736.
- Eagle* nesting on Mt. Katahdin and Univ. of Kansas Mus. Nat. Hist., revised ed., Cambridge (Houghton
- agle in eastern Canada. Canadian e upper Hamilton River and at the Labrador, on the Koksoak River and Kaniapiskau rivers in extreme Hudson Bay, and at Repulse Bay
- SPOFFORD, WALTER R. Nesting of the Golden Eagle at Sugluk Inlet, Ungava, Quebec. Canadian Field Naturalist 73: 177, 1959.
[Gives data on the Golden Eagle nesting at Sugluk Inlet on the extreme northern coast of the Ungava Peninsula.]
- TAVERNER, P. A. Birds of eastern Canada. Can. Geol. Surv. Mem. 104, Ottawa, 1919.
- ### III. Mammals
- ANDERSON, RUDOLPH M. Catalogue of Canadian recent mammals. Nat. Mus. Canada, Bull. 102, Ottawa, 1946.
[*Harbour seal* (*Phoca vitulina concolor* DeKay) recorded (p. 78) in the Ottawa River at the mouth of the Gatineau River near Ottawa in the year 1865, and also a few records in Lake Ontario; *eastern woodland caribou* (*Rangifer caribou caribou* Gmelin) recorded (p. 180) in Nova Scotia, New Brunswick, southern Labrador, Quebec, and Ontario; line of merger not known (p. 182) between *plains bison* (*Bison bison bison* Linnaeus) and extinct *eastern wood bison* (*Bison bison pennsylvanicus* Shoemaker), while surviving *wood bison* (*Bison bison athabascaae* Rhoads) found in northern Alberta to the north side of Great Slave Lake.]
- BARTRAM, WILLIAM. Travels through North and South Carolina, Georgia, East and West Florida. Philadelphia, 1791.
[In the year 1773 visited the Great Buffalo Lick, an area of three or four acres of saline deposit on the great ridge near present Philomath, Oglethorpe County, Georgia (p. 35, 39); but (p. 46) "The buffalo once so very numerous, is not at this day to be seen in this part of the country," although throughout Georgia he found (p. 322) "heaps of white, gnawed bones of the ancient buffalo."]
- BURT, WILLIAM H., and RICHARD P. GROSSENHEIDER. A field guide to the mammals. Cambridge (Houghton Mifflin), 1952.
- CAMERON, AUSTIN W. Mammals of southeastern Quebec. In The Provancher Society of Natural History of Canada (p. 20-86). Quebec, 1951.
[Gives present range of *harbour seal* (p. 54-55) up the St. Lawrence at Trois Pistoles.]
- DEKAY, JAMES E. Zoology of New York, or the New York fauna. Pt. I, Mammalia; Albany (White and Visscher), 1842.
[*Harbour seal* (p. 53-55) found in the year 1823 in eastern Lake Ontario off Jefferson County, N.Y.; also Indian traders say seals formerly found on the shores of Lake Ontario; also New York Harbour and Passaic River in New Jersey.]
- DOUTT, J. KENNETH. A review of the genus *Phoca*. Annals of the Carnegie Museum, 29: 61-126, 1942.
[*Harbour seal* in Seal Lake, Clearwater Lake, and others east of Hudson Bay.]
- DOWNING, STUART C. A provisional check-list of the mammals of Ontario. Roy. Ont. Mus. of Zool., Misc. Pub. no. 2, Toronto, 1948.
[*Woodland caribou* (p. 11) "formerly ranged our north woods as far south as Lake Nipissing"; *harbour seals* (p. 11) "occasionally ascend the St. Lawrence River to Lake Ontario and the Ottawa River as far as Ottawa."]
- FILSON, JOHN. The discovery, settlement and present state of Kentucke. Wilmington (James Adams), 1784.
[Account of the *wood bison* in Kentucky (p. 50-51).]
- HALL, E. RAYMOND, and KEITH R. KELSON. The mammals of North America. New York (Ronald Press), 1959.
[Maps of distribution of *porcupine* (p. 782), *raccoon* (p. 885), *moose* (p. 1015), *caribou* (all species and subspecies, including reindeer lumped as *Rangifer tarandus caribou*, p. 1019), and *bison* (p. 1025).]
- HARPER, FRANCIS. Land and fresh-water mammals of the Ungava Peninsula. Univ. of Kansas, Mus. Nat. Hist., Misc. Pub. no. 27, Lawrence (Kansas), 1961.
- JONES, REV. DAVID. A journal of two visits made to some nations of Indians on the west side of the River Ohio, in the years 1772 and 1773. Burlington (N.J.), 1774.
[Account of the *wood bison* (p. 17) in the year 1772 on the West Virginia side of the Ohio River near the Little Kanawha.]

- KIRK, GEORGE L. The mammals of Vermont. Joint Bull. 2, Vermont Botanical and Bird Clubs, 1916.
 [Harbour seal at Otter Creek, Lake Champlain drainage, in the year 1846 (p. 28-34).]
- LAWSON, JOHN. A new voyage to Carolina, London, 1709.
 [Tutelos of the westward mountains about Roanoke, Virginia, have plenty of buffaloes (p. 48); in the year 1700 saw no buffalo in the eastern half of North or South Carolina, or along the Catawba River, and the buffalo "seldom appears amongst the English inhabitants," yet "some killed on the hilly part of Cape Fear River" (p. 115), apparently in what is now Alamance County, North Carolina, east of Greensboro.]
- LOGAN, J. H. A history of the upper country of South Carolina, from the earliest periods to the close of the War of Independence. (vol. I, all published), Columbia (Courtenay and Co.), 1859.
 [Large herds of buffaloes in cane brakes and on prairie ridges around present Abbeville and Edgefield (p. 6, 15-16); bison still plentiful till about the year 1760 in upper south Carolina, but very scarce at the beginning of the Revolution. The range of bison in South Carolina lay chiefly west of the Broad River and the Fall Line from Augusta, Georgia, to Columbia, South Carolina, the buffalo being most common in Edgefield and Abbeville Counties.]
- MILLER, GERRIT S., JR. Preliminary list of the mammals of New York. New York State Mus. Bull. no. 29, vol. 6, Albany, 1899.
 [Harbour seal in Onondaga Lake near Syracuse, N.Y., in the year 1882, ascending from Lake Ontario; and an unauthenticated record on Lake Champlain off Crown Point, N.Y., about the year 1894 (p. 355-356).]
- MILLS, ROBERT. Statistics of South Carolina, including a view of its natural, civil, and military history, general and particular. Charleston (Hurlbutt and Lloyd), 1826.
 [Wood bison so numerous about Laurens, S.C., in the year 1750 when the first settlement was made that it was not uncommon for three or four men with dogs to kill from ten to twenty buffaloes in a day. They have entirely disappeared (p. 608).]
- OSGOOD, FREDERICK L., JR. The mammals of Vermont. J. of Mammalogy 19: 435-441, 1938.
- PALMER, RALPH S. The mammal guide. New York (Doubleday), 1954.
- PALMER, RALPH S. Late records of caribou in Maine. J. of Mammalogy 19: 37-43, 1938.
 [Woodland caribou (*Rangifer caribou caribou*) till the year 1908 ranged from northern Maine south to the Moosehead Lake region and Hancock County on the coast (Ellsworth).]
- PALMER, RALPH S. (pers. comm.).
 ["The *Raccoon* probably has extended its range in the last 200 years. . . . It is reasonable to expect that, some time in the past, the *Harbor Seal* was distributed from salt up into fresh water until stopped by some physical barrier, as Niagara Falls."]
- PETERSON, RANDOLPH L. North American moose. Toronto (Univ. of Toronto Press), 1955.
 [Excellent detailed study of original and present range of the *moose*.]
- PURCHAS, SAMUEL. Purchas His Pilgrimes. London, 1625.
 [Gives the earliest English account (vol. 4, p. 1765) of the *wood bison* observed by Sir Samuel Argoll in the year 1612 on the Potomac River, at or near present Harper's Ferry (wrongly ascribed by some writers to Washington, D.C.).]
- RHOADS, SAMUEL N. The mammals of Pennsylvania and New Jersey. Philadelphia, 1903.
 [Wood bison in Pennsylvania (p. 47-51).]
- ROE, FRANK G. The North American buffalo. Toronto (Univ. of Toronto Press), 1951.

- SETON, ERNEST THOMPSON. (Holt and Co.), 1929.
 [Distributions and maps of *caribou* (vol. 3, pt. 1, p. 1, pt. 2, map p. 647, and p. 648).]
- SHOEMAKER, HENRY W. Extinct mammals of Vermont. (Univ. of Vermont Press), 1915.
 [Much fact and some of the range of *moose* (p. 11-35), *wood bison* (p. 36-40), and *caribou* (p. 41-45).]
- SHOEMAKER, HENRY W. A Field Guide to the Mammals of Vermont. (Univ. of Vermont Press), 1938.
 [Wood bison ranged eastward on the west branch of the Connecticut River to Haven.]
- SPALDING, THOMAS. National Geographic Magazine 1: 1-10, 1890.
 [Spalding was told by a hunter that buffaloes within ten miles of the coast of Georgia near McIntosh was a resident of Georgia, but he left Georgia for Charleston, S.C.]
- STORK, WILLIAM. An account of the mammals of Vermont. (Univ. of Vermont Press), 1853.
 [Wood bison ranged in Vermont (p. 140-141).]
- THOMPSON, ZADOCK. Historical and Geographical Notes on Vermont. (Univ. of Vermont Press), 1853.
 [Harbour seal south of the coast of Vermont (p. 140-141).]
- TOULMIN, HARRY. A description of the mammals of Vermont. (Univ. of Vermont Press), 1853.
 [Gives passages on the distribution of the species there.]

IV. Trees

- COLLINGWOOD, G. H., and W. H. HARRIS. The Trees of Vermont. (Vermont State Museum), Washington, 1902.
 [Gives maps of "natural distribution" of *elm* (p. 231), *white ash* (p. 311). These vary in distribution.]
- GRIMM, WILLIAM C. The trees of Vermont. (Vermont State Museum), Montpelier, 1902.
 [Gives the correct distribution of *elm* in boggy areas across the state, from the west (Sharon), C. County in the east (Newport).]
- GRIMM, WILLIAM C. The shrubs and vines of Vermont. (Vermont State Museum), Montpelier, 1902.
 [Gives (p. 105-106) the distribution of *A. incana* formerly *A. incana* from England, northern Pennsylvania, and West Virginia, re.]
- HOUGH, ROMEYN B. Handbook of the Trees of Vermont. (Univ. of Vermont Press), 1907.
 [More or less accurate distribution of *elm* (p. 183), *white ash* (p. 391).]
- MATHEWS, FERDINAND S. Field Guide to the Trees of Vermont. (Univ. of Vermont Press), 1915.
 [Distributional maps of *speckled alder* (p. 423) and *basswood* (p. 436). See also p. 436.]

Bull. 2, Vermont Botanical and
ainage, in the year 1846 (p. 28-34).]
1709.

anoke, Virginia, have plenty of
lo in the eastern half of North or
and the buffalo "seldom appears
led on the hilly part of Cape Fear
amance County, North Carolina,

outh Carolina, from the earliest
(vol. I, all published), Columbia

on prairie ridges around present
plentiful till about the year 1760
beginning of the Revolution. The
t of the Broad River and the Fall
uth Carolina, the buffalo being
ies.]

ls of New York. New York State

N.Y., in the year 1882, ascending
rd on Lake Champlain off Crown

g a view of its natural, civil, and
(Hurlbutt and Lloyd), 1826.

in the year 1750 when the first
or three or four men with dogs to
ave entirely disappeared (p. 608).]

t. J. of Mammalogy 19: 435-441,

oubleday), 1954.

e. J. of Mammalogy 19: 37-43,

till the year 1908 ranged from
region and Hancock County on

in the last 200 years. . . . It is
the *Harbor Seal* was distributed
ome physical barrier, as Niagara

ronto (Univ. of Toronto Press),

range of the *moose*.]

25.

5) of the *wood bison* observed by
omac River, at or near present
s to Washington, D.C.].]

i New Jersey. Philadelphia, 1903.

(Univ. of Toronto Press), 1951.

SETON, ERNEST THOMPSON. Lives of the game animals. New York (Doubleday, Doran, and Co.), 1929.

[Distributions and maps of ranges of *porcupine* (vol. 4, pt. 2, map p. 607); *woodland caribou* (vol. 3, pt. 1, map p. 60); *moose* (vol. 3, pt. 1, map p. 160); *bison* (vol. 3, pt. 2, map p. 647, and discussion of *wood bison*, p. 639-717).]

SHOEMAKER, HENRY W. Extinct Pennsylvania animals. Pt. II, Altoona, 1919.

[Much fact and some questionable tradition on extinct mammals of Pennsylvania; *moose* (p. 11-35), *wood bison* (p. 64-104).]

SHOEMAKER, HENRY W. A Pennsylvania bison hunt. Middleburg (Pa.), 1915.

[*Wood bison* ranged east to present Northumberland and Carlisle and were numerous on the west branch of the Susquehanna River about Clearfield and Lock Haven.]

SPALDING, THOMAS. National portrait gallery of distinguished Americans, 1836.

[Spalding was told by Lachlan McIntosh that when he was a boy he saw 10,000 buffaloes within ten miles of Darien (vol. III, p. 2). Darien (formerly Iverness) is near the coast of Georgia in McIntosh County just north of the Altamaha River. McIntosh was a resident there from the age of eleven in the year 1736 until he left Georgia for Charleston in 1748.]

STORK, WILLIAM. An account of East-Florida. London (G. Woodfall), 1766.

[*Wood bison* ranged into the interior of East Florida (p. 19).]

THOMPSON, ZADOCK. History of Vermont, natural, civil, and statistical. Pt. I. Burlington (Vt.), 1853.

[*Harbour seal* south of Burlington on Lake Champlain in February, 1810 (p. 38); *moose* in northern Vermont (p. 49-50); also a good account of the *lake trout* in Vermont (p. 140-141).]

TOULMIN, HARRY. A description of Kentucky, in North America. London, 1792.

[Gives passages on the *wood bison* in Kentucky and the gradual extinction of the species there.]

IV. Trees

COLLINGWOOD, G. H., and WARREN D. BRUSH. Knowing your trees. American Forestry Assoc., Washington, 1955.

[Gives maps of "natural ranges" of *tamarack* (p. 59), *white spruce* (p. 67), *beech* (p. 181), *elm* (p. 231), *sugar maple* (p. 272), *basswood* (p. 295), and *white ash* (p. 311). These vary in degree of accuracy.]

GRIMM, WILLIAM C. The trees of Pennsylvania. Harrisburg, 1950.

[Gives the correct distribution of the *tamarack* in Pennsylvania (p. 83), in wet or boggy areas across the northern tier of counties, as far south as Mercer County in the west (Sharon), Centre County (Bellefonte and State College), and Monroe County in the east (north of Blue Mountain in the Poconos).]

GRIMM, WILLIAM C. The shrubs of Pennsylvania. Harrisburg, 1952.

[Gives (p. 105-106) the correct distribution of the *speckled alder* (*Alnus rugosa*, formerly *A. incana*) from southern Labrador to Saskatchewan, southward to New England, northern Pennsylvania, and southward in the mountains to Maryland and West Virginia, region of the Great Lakes, and west to Iowa.]

HOUGH, ROMEYN B. Handbook of the trees of the northern States and Canada. Lowville (N.Y.), 1907.

[More or less accurate distributional maps of the *tamarack* (p. 21), *white spruce* (p. 25), *elm* (p. 183), *sugar maple* (p. 325), *basswood* (p. 351), *beech* (p. 133), and *white ash* (p. 391).]

MATHEWS, FERDINAND S. Field book of American trees and shrubs. New York (Putnam), 1915.

[Distributional maps of *tamarack* (p. 408), *white spruce* (p. 408), *beech* (p. 421), *speckled alder* (p. 423), *elm* (p. 426), *sugar maple* (p. 434), *white ash* (p. 434), and *basswood* (p. 436). Some of these are inaccurate.]

MUNNS, E. N. The distribution of important forest trees of the United States. U.S. Dept. of Agriculture, Misc. Pub. no. 287, Washington, 1938.
[More or less accurate distributional maps of *tamarack* (p. 31), *white spruce* (p. 35), *beech* (p. 91), *elm* (p. 124), *sugar maple* (p. 152), *basswood* (p. 160), and *white ash* (p. 169).]

V. Fishes

BEAN, TARLETON H. Catalogue of the fishes of New York. New York State Mus. Bull. 60, Albany, 1903.

[*A. nebulosus* throughout the state (p. 87-89), *C. namaycush* recorded only in Cayuga Lake (p. 266-271), *E. lucius* only in Lake Ontario, Lake Champlain, and Lake George (p. 298-301), and *M. dolomieu* confined to St. Lawrence drainage and Lake Champlain (p. 486-490).]

COKER, ROBERT E. Studies of common fishes of the Mississippi River at Keokuk. Document 1072, Bull. U.S. Bur. of Fish., vol. 45, p. 141-225, Washington, 1930.

DEKAY, JAMES E. Zoology of New York, or the New York fauna. Pt. IV, Fishes, Albany (White and Visscher), 1842.

[*M. dolomieu* in Lakes Erie and Ontario, Oneida Lake, and Onondaga Creek (p. 28-30).]

EVERHART, WATSON H. Fishes of Maine. Maine Dept. of Inland Fisheries and Game, Augusta, 1950.

EVERMANN, BARTON W. The fishes of Kentucky and Tennessee: a distributional catalogue of the known species. Document 858, Bull. U.S. Bur. of Fish., vol. 35, p. 293-368, Washington, 1918.

[*E. lucius* only in the Ohio River in Kentucky, the southern limit; *M. dolomieu* in most streams of Kentucky and Tennessee, east only to the mountains of western North Carolina; *A. nebulosus* in most Kentucky streams, but only a few in Tennessee.]

FISH, MARIE P. Contributions to the early life histories of sixty-two species of fishes from Lake Erie and its tributary waters. Bull. 10, vol. 67, p. 292-398. U.S. Bur. of Fish., Washington, 1932.

[*C. namaycush* restricted to the deeper parts of Lake Erie, spawning on rocky shoals and reefs in depths of 77 to 90 feet in autumn, and eggs develop on the bottom of rocky caverns and hatch in late winter or early spring; *A. nebulosus* restricted to sheltered bays of Lake Erie and common in sluggish streams and ponds of the surrounding region; *E. lucius* not found in Lake Erie except at the mouths of certain creeks, but is common in weedy larger streams of the region; *M. dolomieu* very abundant along shores of Lake Erie.]

FORBES, STEPHEN A., and ROBERT E. RICHARDSON. Maps showing the distribution of Illinois fishes to accompany a report on the fishes of Illinois. Ill. State Lab. of Nat. Hist., Danville (Ill.) 1908.

[*A. nebulosus* locations given on map 54; *E. lucius* on map 62; and *M. dolomieu* on map 80.]

FORBES, STEPHEN A. On the general and interior distribution of Illinois fishes. Bull. of the Ill. State Lab. of Nat. Hist. vol. 8, no. 3, Danville, 1909.

FOWLER, HENRY W. A list of the fishes recorded from Pennsylvania. Revised ed., Commonwealth of Pa., Board of Fish Commissioners, Harrisburg, 1948.

[Gives lists of all species by county and watershed distribution, and indicates whether native or introduced.]

FOWLER, HENRY W. Fishes of South Carolina. Charleston Museum, Charleston, 1935.
[*A. nebulosus* in Catawba River and other streams.]

HARLAN, JAMES R., and E. B. SPEAKER. Iowa fish and fishing. 2nd ed., 1951.
[*E. lucius* (p. 52); *A. nebulosus* (p. 92); and *M. dolomieu* (p. 108).]

HARPER, FRANCIS. Field and sula and on certain mar J. of Elisha Mitchell Sci

JORDAN, DAVID S., and BAR York (Doubleday), 1903

[*A. nebulosus* (p. 26); distinguished from *g vomer*, which is *arme* 357).]

KENDALL, WILLIAM C. The Nat. Hist., vol. 8, p. 1-1

[*C. namaycush* locatio

LA MONTE, FRANCESCA R. Doran, and Co.), 1945.

LINDSEY, C. C. Problems i Bd. of Canada, vol. 21,

[*Lake trout* given as *Cristivomer*, reverting differences of opinion and its limitation to lamprey. Gives more absent in Newfoundland for some states and p in detail, while for ot

PEARSE, A. S. The food of Bull. U.S. Bur. of Fish.

[*A. nebulosus* (p. 254 Mendota, Wingra, M absent.)]

PEARSE, A. S. The distribut Univ. of Wisconsin Stu

[*C. namaycush* found and Lakes Wingra an

SCOTT, W. B. Freshwater f 1954.

[Significant remarks *A. nebulosus* (p. 66),

TRAUTMAN, MILTON B. TH

[Gives complete distr do so. Classifies the with the rest of the ca says the species was almost never found (p. 486-489), the sn Lacépède, improperly French personal nar naturalist's name sin (p. 212-214); and the *Salvelinus* which is q end of Lake Erie, an

VLADYKOV, VADIM D. COI la peche dans 48 Lacs Pêcheries, Québec, 1942

[*C. namaycush* "asse: the other lakes of thi

trees of the United States. U.S. Fish and Wildlife Service, Washington, 1938.

[*A. tamarack* (p. 31), *white spruce* (p. 152), *basswood* (p. 160), and

York. New York State Mus. Bull.

C. namaycush recorded only in the Ontario, Lake Champlain, and drained to St. Lawrence drainage and

the Mississippi River at Keokuk, Iowa, p. 141-225, Washington, 1930.

New York fauna. Pt. IV, Fishes,

Ontario Lake, and Onondaga Creek

Journal of Inland Fisheries and Game,

Tennessee: a distributional catalog. U.S. Bur. of Fish., vol. 35, p.

the southern limit; *M. dolomieu* is found only to the mountains of western New York streams, but only a few in

lists of sixty-two species of fishes in U.S. Bur. of Fish., vol. 67, p. 292-398.

Lake Erie, spawning on rocky shores in autumn, and eggs develop on rocky shores in summer or early spring; *A. nebulosus* is common in sluggish streams and is found in Lake Erie except at the rocky larger streams of the region; [Lake Erie.]

maps showing the distribution of fishes of Illinois. Ill. State Lab. of Nat.

A. nebulosus on map 62; and *M. dolomieu*

distribution of Illinois fishes. Bull. of the Illinois State Lab. Nat. Hist., 1909.

from Pennsylvania. Revised edition, U.S. Fish and Wildlife Service, Harrisburg, 1948.

showed distribution, and indicates

Academy of Natural Sciences, Philadelphia, 1935. [U.S. Fish and Wildlife Service, Washington, 1935.]

Fishing. 2nd ed., 1951.

M. dolomieu (p. 108).

HARPER, FRANCIS. Field and historical notes on fresh-water fishes of the Ungava Peninsula and on certain marine fishes of the north shore of the Gulf of St. Lawrence. J. of Elisha Mitchell Scientific Soc., 77: 312-342, 1961.

JORDAN, DAVID S., and BARTON W. EVERMANN. American food and game fishes. New York (Doubleday), 1903.

[*A. nebulosus* (p. 26); *C. namaycush* (p. 203) found in Lake Henry in Idaho, and distinguished from genus *Salvelinus* by a raised crest behind the head of the vomer, which is armed with teeth; *E. lucius* (p. 236); and *M. dolomieu* (p. 355-357).]

KENDALL, WILLIAM C. The fishes of New England. Memoirs of the Boston Soc. of Nat. Hist., vol. 8, p. 1-103, Boston, 1914-1927.

[*C. namaycush* locations in Vermont, New Hampshire, and Maine (p. 11-13).]

LA MONTE, FRANCESCA R. North American game fishes. New York (Doubleday, Doran, and Co.), 1945.

LINDSEY, C. C. Problems in Zoogeography of the lake trout. J. of the Fisheries Res. Bd. of Canada, vol. 21, no. 5, p. 977-994, 1964.

[*Lake trout* given as *Salvelinus namaycush*, with genus *Salvelinus* rather than *Cristivomer*, reverting to the older classification of Walbaum and reflecting the differences of opinion of morphologists. Discusses the distribution of the species and its limitation to the region of Pleistocene glaciation and absence of the lamprey. Gives more or less detailed information on its regional distribution: absent in Newfoundland and not native in the Columbia River basin or Vancouver; for some states and provinces (i.e., Montana) specific bodies of water are named in detail, while for others data are incomplete.]

PEARSE, A. S. The food of the shore fishes of certain Wisconsin lakes. Document 856, Bull. U.S. Bur. of Fish., vol. 35, p. 245-292, Washington, 1918.

[*A. nebulosus* (p. 254), *E. lucius* (p. 258), and *M. dolomieu* (p. 266) in Lakes Mendota, Wingra, Monona, and Waubesa near Madison, but *C. namaycush* absent.]

PEARSE, A. S. The distribution and food of the fishes of three Wisconsin lakes in Summer. Univ. of Wisconsin Studies in Science, no. 3, Madison, 1921.

[*C. namaycush* found only in Lake Michigan; *M. dolomieu* found in Green Lake, and Lakes Wingra and Geneva.]

SCOTT, W. B. Freshwater fishes of eastern Canada. Toronto (Univ. of Toronto Press), 1954.

[Significant remarks on the distributions in Canada of *C. namaycush* (p. 34-35), *A. nebulosus* (p. 66), *E. lucius* (p. 74-75), and *M. dolomieu* (p. 99).]

TRAUTMAN, MILTON B. The fishes of Ohio. Columbus (Ohio State Univ. Press), 1957.

[Gives complete distributional maps, one of the first books on American fishes to do so. Classifies the *brown bullhead* as *Ictalurus nebulosus*, in the genus *Ictalurus* with the rest of the catfish family, rather than as *Ameiurus nebulosus* Le Sueur, and says the species was originally rare or absent in the southern third of Ohio and is almost never found in the Ohio River (p. 424-426). Gives the *smallmouth bass* (p. 486-489), the small-mouth black bass of others, as *Micropterus dolomieu* Lacépède, improperly since the Latin genitive ending should not be applied to a French personal name; nearly all writers have erred in spelling the French naturalist's name since he himself wrote it as Lacépède. Gives data on *E. lucius* (p. 212-214); and the *lake trout* (p. 194-196) as *Salvelinus namaycush* in the genus *Salvelinus* which is questionable, and states that it is common in the deep east end of Lake Erie, and rare in the shallow west end.]

VLADYKOV, VADIM D. Conditions physico-chimiques et biologiques, et statistiques de la pêche dans 48 Lacs du Parc des Laurentides. Ministère de la Chasse et des Pêcheries, Québec, 1942.

[*C. namaycush* "assez abondant" in Lac des Neiges (p. 175-176), but absent in the other lakes of this district.]