



*The*  
**Begonian**

January/February 2002

# *The* **Begonian**

ISSN 0096-8684

Publication of the American Begonia Society

## **American Begonia Society**

**Founded January 1932 by Herbert P. Dyckman**

### Aims and Purposes

To stimulate and promote interest in begonias and other shade-loving plants.

To encourage the introduction and development of new types of these plants.

To standardize the nomenclature of begonias.

To gather and publish information in regard to kinds, propagation, and culture of begonias and companion plants.

To issue a bulletin that will be mailed to all members of the society.

To bring into friendly contact all who love and grow begonias.

**The Begonian** is published bimonthly by the American Begonia Society, Inc. Views expressed are not necessarily those of the society, its officers, or the editor. Contents, except where labeled otherwise, may be reprinted without limitation, provided credit is given to "The Begonian, magazine of the American Begonia Society."

Membership (subscription) \$17 annually, \$23 first class mail, US, Mexico, and Canada. \$27 foreign surface mail except Mexico and Canada, \$37 Overseas airmail. Added member, same household, \$2. Consult Membership Chairman for sustaining, benefactor, life membership dues. U.S. currency only. Back issues (current volume) \$2.50.

**American Begonia Society** - P.O. Box 471651, San Francisco CA 94147-1651

**Membership** - Subscription, dues, circulation, inquiries, and address changes: Arlene Ingles., 157 Monument, Rio Dell, CA 95562-1617; (707) 764-5407. E-mail: [ingles@humboldt1.com](mailto:ingles@humboldt1.com)



## Cover

**Front:** Oh, winter joy! The rhizomatous blooms are coming and to raise our expectations here is **Iris Bird's** photo of *B. 'Northern Lights'* which bloomed for her in January and February last year. This is probably the Logee hybrid (listed in their 1996-7 catalogue) of unknown parentage. A Rex and a *Semperflorens* hybrid have this name as well.

**Back:** **Louise Korobkin** grows fabulous Rexes, in the ground and in pots - see page 35. Here is her plant of *B. 'My Good Friend'* in a clay pot. She thinks it originated in Florida.

# In This Issue

**2001 Index** 17

**Coming!**

## Articles

Begonias as Standards	5
<i>B. 'Peggy's Pet'</i>	8
<i>B. 'Anna Lee Salisbury'</i>	9
Why are Some Begonias Red Underneath the Leaves?	12
On Tuberous Leaf cuttings	13
What Affects Plant Leaves	14
Ballot on Constitution Change	15
New Cultivars	32
A Work In Progress	35
In Memory: Sylvia Leatherman, Mae Blanton, Lillian Washburn	36

## *Begonias International*

**2002 ABS  
Convention/SWR  
Get-Together  
Houston  
May 29-June 2, 2001**

## Regular Features

President's Message	4
Letters to the Editor	10
Pronunciation Guide	13
Editor's Notes	25
Seed Fund	27
ABS Board Minutes	30
Annual Meeting Minutes	31
Identify this Species	33
News	34
Coming Events	38
Officers' Page	39

### Quick

Check your mailing label.  
If it reads  
**200203 or 200204**, your  
membership is about to  
expire. Please renew! We  
don't want to lose you.

## President's Message...

As this is being written, the holiday season is ahead, but by the time you read this the season will be passed. My wish for all is that you had a positive, memorable time. And as you read this, winter weather will have set in no matter where you live in the northern hemisphere. In southern California, it is the wet season - rain, fog, overcast days. Without plants I would have a hard time now. Hours spent on terrariums, light cart., and the garage light garden melt winter's gloom for me. Plants inside need less daily attention, so time can be spent on details - hunting mealy bugs, looking for mildew, grooming, moving to more or less light, and on and on. Plants outside need attention to avoid problems with over-watering and mildew.

Other ways to dispel my winter gloom are to reread back issues of the *Begonian*, and scan plant books neglected during the growing seasons. This is also a good time to sow begonia seeds. They seem to germinate and grow faster, and by late spring are ready to be transplanted to grow throughout summer and fall.

As you may know, the winter board meeting will be February 22-24 in West Palm Beach, Florida. Our hosts will be the Begonia Society of the Palm Beaches, and they have planned a most interesting agenda. There are four tours of member gardens, a visit to the Palm Beach Tropical Garden Show, and a buffet dinner following the Saturday afternoon board meeting. All ABS members are invited to attend.

After many productive years as the Chair of Conservation, **Tamsin Boardman's** resignation was regretfully accepted. Her work has been divided between two individuals, subject to board approval in February. **Bill Claybaugh**

(Houston Astro Branch) has agreed to become the Conservation Chair. He has already submitted a comprehensive, ambitious plan for fulfilling this position. **Rekha Morris** (Atlanta Branch) has accepted the position of editor of the *Save Our Species (S.O.S) Newsletter*. She is an experienced garden writer, enthusiastic grower of species, and travels searching for begonias. I know both members will do a great job, and I ask that they be given your support. Details regarding the *S.O.S. Newsletter* and project will be forthcoming in the March-April issue of the *Begonian*.

On a personal note, I regard the activities of these two members as of the utmost importance. This was brought home by a newspaper article on how deforestation changes the surrounding weather and climate and ultimately growing conditions. We who grow species need to preserve them as they may, and do, become extinct in their native habitat. The article concluded, "Each year about 81,000 square miles of tropical forest are cleared." Our support of conservation of our wonderfully diverse genus of *Begonia* furthers the aims and purposes of our American Begonia Society.

Related to the preceding, I urge all branches and members to consider contributing to **Scott Hoover's** February collecting expedition to Indonesia. Contributions may be made to our treasurer, **Carol Notaras**, with a note indicating the purpose of the contribution.

*Morris Mueller*

---

### Quick Tips

We really need your quick tips! Thank you for sending them to **Dianna Wilkerson** at the address on page 38.



# Begonias as Standards

by Brad Thompson

As a grower with limited growing space, I'm always looking for novel ways to grow begonias. I try to use my space effectively for maximum show and squeeze in as many varieties as possible. Over the last few years I've grown begonias on moss covered boards, on trellises, in wall pocket type bags as ways to use space. Lately I've been working on growing begonias as standards. In case you don't know what I mean by a standard, this is a method of growing a plant into a treelike form with one central stem and full at the top. This article is to share some of the methods and which varieties are likely to make the best standards.

The hardest part of making a standard is figuring out what begonia to use. Here are qualities to look for when choosing the plant. You need to pick varieties that are balanced between easy blooming and good branching. If you choose one that blooms too heavily and rarely branches, you'll have great difficulty in getting it to conform to a standard. On the other hand if you choose one that branches really well but rarely blooms you'll end up with a standard that never blooms. No sense in putting in all that work on a plant that doesn't perform.

Another important trait is a plant that will grow one sturdy straight stem, but that will also put out manageable side shoots when pinched out. Some begonias such as *B. 'Sophie Cecile'* would put up a nice sturdy main shoot, but you might have trouble keeping it in check since it's

such a strong grower. Also, the amount of pinching required to make it conform would almost guarantee that you'd never get any blooms since it's a shy bloomer to begin with. At the opposite, a plant such as *B. 'Tom Ment'* would make a lovely standard if only you could get a stem to grow two or three feet tall that would be sturdy enough to support all future growth on the plant.

There are many choices; in this article I'm trying to refer to begonias that nearly everyone is familiar with. A cane that would be nearly perfect in traits to grow as standard would be *B. albo picta*. It

can send up nice sturdy shoots, sends out nice side growth when pinched, and still blooms well. An example of a shrub that has nearly perfect traits is *B. echinosepala*. There are many, but I'm list-

ing these two as examples to follow when choosing. Begonias that probably wouldn't make good standards are *Semperflorens* or *Semperflorens* hybrids such as *B. 'Christmas Candy'*. They bloom well, but are nearly impossible to branch once they start blooming.

Creating a standard is a fairly simple process, but you must be prepared to spend a year or two growing one to full glory. The first year will be spent mostly getting it to the height you want and the second year will be spent pinching it to make it fill in.

I try to start cuttings specifically to make standards with. For this purpose, I try to find those bad cuttings that we normally throw away, those that have bloomed

***Creating a standard is a fairly simple process, but you must be prepared to spend a year or two growing one to full glory.***

up the stem. For normal purposes these cuttings are not good because any plant you create from them will have no basal growth when planted. For making standards, a cutting that won't make basal growth is perfect.

Once the cutting is rooted, pot it up as you normally would. It helps to put in a tall stake right from the beginning so you can keep the plant tied up straight as it grows. It will also help you remember that you're making a standard. I can't



tell you how many times I've forgotten and pinched the tip. Continue to tie the plant to the stake as it grows and remove any side growth that might try to pop out. One important note, make sure you don't tie the stem too tightly. This main stem will grow larger with time and the tie can cut right through it. The flexible stretchy plastic ties like you would use on tomatoes work best to avoid this problem. Later when the plant is mature you can switch to the wire plastic ties. It's best to keep the standard staked its entire life whether the main stem seems really sturdy or not.

You can grow the standard to whatever height you choose, two to three feet is usually a good height, but you can make

it taller if you like. Take into account that it will end up taller after you pinch it out. I encountered a problem I hadn't considered when I made them, that they were too tall to fit in my covered pickup when I

wanted to take one to a show. When the stem is as tall as you would like, pinch out the main growing tip. Make sure there are side buds where you pinch out though. If it's blooming heavily and you pinch it, it will branch out down lower wherever there

are side growth nodes. You can try growing it in less than the best light during this process to keep it from coming into bloom.

As the side shoots come out, let them come out a few nodes and then pinch them again. The first year you should keep up this pinching every few nodes until you have a shapely plant and not worry about blooms. Any new basal growth that comes up should be cut completely out at or below the soil line.

For potting, at first it should be kept a little under-potted to avoid overwatering. If you find it hard to keep upright, either use a clay pot or set the plastic pot inside a clay pot for stability. As it matures the standard should be treated like you would any



begonia with regular fertilizer and so forth. Determine future pot sizes by how much growth is at the top, not by how tall the stem is. The pot should be about one third the size of the top growth at its most mature. You can also determine that it needs a bigger pot if it starts drying out faster than other plants around it.

Pinching will be a yearly requirement to keep the standard in shape. In the spring you may also need to do some pruning to keep it in line. Make sure not to prune back so hard that you remove most of the good nodes. If you prune really hard you may undo part of the previous year's work.

Standards make really spectacular additions to your gardens and collections. If you're trying it for the first time, since it is a long process, do lots of different varieties at one time so you won't be as disappointed with failures. It will take some experimenting to find good canes and shrubs to use. Some might seem like good choices, but their branches aren't strong enough to support themselves in the tree

form. Others might seem fine at first, but turn out to be varieties that are prone to die back. Remember, the plant has to live it's entire life off one stem so it has to last long time. I made a wonderful standard of

***Remember, the plant has to live it's entire life off one stem so it has to last a long time.***

*B. 'Laura Engelbert'* one year, but it was only great for one year. It died back all the way to the main stem over that next winter so although it was beautiful, it

wasn't long lasting and not worth doing again. Hope you give standards a try, they are fun and rewarding, even if they do take a little work.

*Brad Thompson won this year's A. D. Robinson Medal for his beautiful hybrid, B. "Little Miss Mummey". The plant shown is his B. 'Suspicion' (B. 'Jumbo Jet' x 'Dumbo'. His expertise in growing is well-known to all. You may write him at 2436 W. Lomita Bl. #1, Lomita, CA 90717.*

---

## **Propagation Tips**

- \* I like to propagate on wet days.
- \* If you are having trouble growing a plant, strike a leaf or cutting and start another plant.
- \* Before pruning for cuttings, make sure the plant is well watered and has been given enough lime for the stems to become firm. If I have cuttings that have become limp, I stand them in water until they become firm.
- \* Small leaves of new plants are easiest to propagate from because they are more plentiful and they fit into propagation tubes or boxes better. Leaves can sometimes continue to grow while striking.
- \* Always remove any decayed matter from your propagation boxes as it may cause damage to other cuttings or leaves.

\* Sometimes you may think cuttings or leaves have rotted and didn't strike, but sometimes a new plant comes up later.

\* I do not use any striking agents, but over the years I have tried a few.

\* I do not continually sterilise, though it is important to use clean, sharp cutting tools I use small stainless steel scissors.

\* Ensure the propagation mix is prewatered before putting cuttings down, and then kept evenly moist.

\* Sometimes when a leaf has struck, I will then cut some wedges from it (this is handy when leaves are scarce).

**Dot Mann**

*These tips were excerpted from an article on propagation by Dot Mann in The Queensland Begonia Society Inc. Journal, Vol. No. 51 2001, p.39 40.*

# B. 'Peggy's Pet'

by Peggy Fratus



the Winter board Meeting in Atlanta in February 2001.

I am not sure who is growing the plant at the present time, but I do know that Mary Bucholtz has one in Jacksonville, FL, as well as Carol Notaras in San Francisco, CA.

*Do you have other hybrids to show us, Peggy? This one shows its B. maculata heritage. Thanks for sharing. You may write to Peggy at: 3404 Sherwood Blvd., Delray Beach, FL 33445-3625.*

In 1996, I crossed *B. 'My Special Angel'* with 'Texas Teasipper'. The resulting cane bloomed in 1997 with pink flowers.

Charles Jaros obtained one of the plants at an auction at our Palm Beaches Branch in 1997. He liked it well enough to want to enter it into New Introductions at the ABS Convention in Atlanta in 1998, and so it was named *B. 'Peggy's Pet'*.

Charles later gave it to Harmony Foliage for introduction into the trade. It was used as centerpieces at







## Begonia 'Anna Lee Salisbury'

by Mildred Swyka

This lovely rhizome came to me in an exchange box - I don't remember where it came from or who sent it. I tried to find information about this begonia, but failed. I even wrote to Ann Lee Salisbury.

The rhizome on this begonia is very thick and it has a thick dark green leaf with light colored veins. A large begonia, it blooms well from December to March with white flowers.

Some of my rhizomatous begonias seem to be sluggish at the beginning of

summer so I gave this one a watering of "Miracle Gro Mir-Acid." In two weeks I could see a nice improvement.



*And in the inset to the left you see Ann Salisbury herself, Past President of ABS and winner of both the Herbert B. Dyckman and the EvaKenworthy Gray Award. Mildred, the begonia is one of Dorothy Caviness' hybrids and the parentage is unknown. Mildred Swyka has contributed many articles to the Begonian; you may write her at:*

*1147 Bethel Church Road, Middletown, DE 19709, Ph. 302-378-9324.*

# Letters to the Editor

## About U402

I read the *Begonian* of November/December 2001 and I have some information about ...*B. U402* which I took to Miami as a present to John Howell. The begonia was collected by **Mr. Atuyuki Ashizawa** in Venezuela. I think he is also an ABS member. If you need some detail, I'll ask him.

I wish you all to be safe and healthy.  
**Yumiko Yamaguchi**  
zilagon@f2.dion.ne.jp

*Yumiko, I hope you will ask Mr. Ashizawa for the details of his collection - where in Venezuela and its growing conditions there - and let us know more about this fascinating begonia.*

*And below, is a translation sent to us by Akira Tanaka of an article about B. U402 before it was given a U number which appeared in Begonia, Journal of the Japanese Begonia Society, 1997 January/March 1997, #178 along with a photo on the rear cover:*

### -Introducing New Species-

#### 8. *B. Venezuela* sp. #2

by **Michiko Nakamura**

This species has been imported by **Ashizawa**, the honorable Director of the Japan Begonia Society (JBS) from Venezuela. It is Shrub-like, resembling *B. bartonea* [hort. syn. for *B. 'Winter Jewel'*]. I do not imagine how tall it's stem will be. (Plant of the photo is 30 cm. tall).

The stem is 8 mm. in diameter at the base, internodes are 2.5 cm. Petiole is 2.5 cm. long. Leaf blade is 22 x 4 cm., oval, serrulate, brown tinted green at center among whole green among whole green with red veins, having transparent pubescence of 2 mm. on surface. Entire

green and red on edge within 5 mm. with transparent pubescence on vein beneath.

Peduncles separate in three directions at 3-4 cm. ahead from the base and have one staminate at center and two staminate and one pistillate flower at both sides, white with pink surrounding the petals.

This species grows with vigor and strongly and easy to grow. Propagation is easy with cutting. I tried to propagate it with petiole cutting same as *B. bartonea*. It puts forth roots, but leaves have died before it germinates and whole plant has died.

*Akira and Michiko, for me leaf cuttings rooted almost instantly and grew many plants quickly. I started them in my usual seed germinating mix of 1 part Jiffy mix to 1 part perlite, keeping them covered until they were well rooted and growing*

## The Scottish Begonia Society

Our President **Mr. Hugh McLaughlan** was in the US recently and has asked me to write and advise that I am the point of contact for anyone who wishes to contact this Society. I trust you will note your records accordingly.

In the meantime on behalf of all members of the Scottish Begonia Society may I wish you and all your members great joy in the growing and cultivating of one of God's most beautiful plants.

With kind regards,

**John Wood**

Honorary Secretary

101 Branchalfield Drive

Wishaw, Scotland MIL2 8QE

Phone: 01698 382756

Email: JoWoodhn@aolcom

*Members, please change your Directory of Begonia Societies in the July/August issue to reflect this.*



## Joining Forces

I remember when I got my first bicycle. As a preteenager I was so excited about the whole new world it opened up to me. I began to ride my bike on Saturdays up and down the alleys looking for plants that people had tossed there from their homes or gardens. I was so jubilant when I found a "Beefsteak" begonia someone had thrown away. It was my first begonia plant experience. It was like gold to those young eyes and heart.

My name is Chuck Ades and I am owner of Ades and Gish Nurseries, a wholesale nursery in Encinitas near San Diego, California which I started in 1972 with partner Bill Gish. The nursery has grown to about 800,000 square feet of greenhouses (about 18 acres) with about 120 workers shipping indoor houseplants and patio plants throughout the United States. Because of my love of plants we grow many hundreds of varieties of plants (we don't even know how many). I tell people I am a hobbyist that went crazy. Now, as I reach retirement age (but I'm not retiring - just changing my focus) I have that same excitement that I had as a youth, when I found my first begonia plant, about our Ades & Gish Nurseries "Classic Begonias Collection" project.

Our plan is to grow and make available to the retailers throughout the United States about 100 different begonia species and hybrids, mostly rhizomatous and cane-like types. To make the collection continually interesting I plan on dropping a few of those which I consider less acceptable and adding an equal number of new varieties each year. This will allow me to eliminate varieties that are people unfriendly (hard to grow) and to keep "excitement" in our collection because of new varieties introduced yearly. As I have al-

ways been one that likes to share his interests with others, my objective is to "hook" new people into the exciting world of begonias. By attracting new people into growing begonias and including the ABS web site and cell phone number with our plants, I should be able to increase membership in the begonia societies in cities where we sell our plants. Begonia society members can help this effort by letting us know about retail nurseries in their area that should be, but are not carrying our Begonia Collection. It will be up to us to find a way to get the plants to the nursery.

While attending the ABS meeting in Denver, July 2001, I asked for and was given permission to use the ABS web site and cell phone number as a reference on our plant labels. This should hopefully make it easier for the general public to become aware of the American Begonia Society's existence and increase its membership.

We are also featuring begonias on our web site [www.agnurseries.com](http://www.agnurseries.com) with links to the ABS web site. I feel this is a win-win association between ABS member clubs, Ades & Gish Nurseries, and other nurseries specializing in growing and selling of begonias. Our nursery is offering a very public opportunity to buy a sampling of begonias at local retail nurseries. Our UPC label will have the ABS web site and phone number so people can learn more about begonias and find out where and when their nearest ABS chapter meets. By joining the society they will become aware of the many other sources of Begonias through the advertisers in your publication. ABS will increase its membership and we can produce and sell more begonias. Please help us by providing names and phone numbers of your local retail nurseries that you feel would like to carry our begonia collection. We can be contacted at: PH: 1-760-436-1377 ext. 137 (Dan); Web site:

www.agnurseries.com; E-mail:  
Plantsales@agnurseries.com; or by mail.

**Chuck Ades,**  
Ades and Gish Nurseries, Inc.  
875 Balour Dr.  
Encinitas, CA 92024

---

## **Why Are Some Begonias Red Underneath the Leaves?**

**by Michael O'Dea**

All plants require light to live, grow and remain productive. However, you need to observe the way in which these plants coexist in their natural habitat.

Walk through a rainforest, look up, and observe the way in which leaves position themselves to catch the maximum amount of light possible. This produces a marvelous mosaic effect. As we bring our gaze down towards the forest floor, we will see younger or smaller growing trees stretching up towards the light, and below them we will find the floor dwelling plants of various types and sizes. It becomes obvious then that not all the plants can obtain the same amount of light. By the time we reach the floor dwellers, we find that nature has assisted them by various means to obtain their quota of light in differing ways, eg. a form of edible aroid, which is found in Borneo, over thirty square feet, while other members of the same family, which grow much smaller, produce a purple pigment under the leaf.

Some other plant species have their leaves follow the meagre light by presenting the upper surface of their leaves towards the sun at first light and follow the course of the sun during the day in order

to collect the maximum amount of light possible.

Other plants, eg. calathea, maranta, produce herringbone patterned colours on their upper leaves and a red pigment under the leaf to trap sufficient light for their needs.

Begonias provide their leaves with several ways of obtaining light. One is by producing a red colouration under their leaves, which has the effect of trapping the light which has passed through the upper surface of the leaf, and reflecting it back into the leaf tissues so that the chlorophyll has a second chance to utilise what is left of it.

Another way is to provide pigment free areas on the upper surfaces of their leaves which allow the light to enter through these windows acting as tiny lenses which focus on the grains of chlorophyll.

The tissues of the leaves are composed of many layers of cells which could be likened to a factory, producing the plant's needs. Now, imagine each leaf as being composed of both an upper and a lower surface joined at the edges with a space within containing this factory which is powered by the light it receives. This light is necessary to activate the small grains of chlorophyll which are contained within each leaf factory. The process of conversion then takes place within each leaf. The organic compounds drawn up in liquid form from the soil are synthesised by the reduction of the carbon dioxide which is taken in through the stomata (pores) using energy absorbed by chlorophyll from sunlight (photosynthesis). Put another way, the energy of light is formed into chemical energy, which is used to decompose the carbon dioxide and water into a new compound. This then is changed successively into complex substances, until finally, sugars are produced



which is used to decompose the carbon dioxide and water into a new compound. This then is changed successively into complex substances, until finally, sugars are produced which are ultimately stored as starch. It is during this process that oxygen is released into the atmosphere.

*This article is taken from The Queensland Begonia Society Inc. Journal, Vol. No. 52, 2001, p. 12-13. Their editor June McBride adds, "The undersides of some begonia leaves can be every bit as beautiful as the leaf surfaces. B. 'Tomewin' is one example with red on the undersides of its leaves. If you can place this plant where the late afternoon rays strike it, the plant will seemingly turn into a fireball - quite stunning." Perhaps, this is a reason that juvenile leaves often have the white spots - the young plants must make their way near the earth where light may be in shorter supply, then as they age they can dispense with the spots since as they grow taller, they have better access to sunlight?*

## On Tuberous Leaf Cuttings by Mike Stevens

I do take leaf cuttings [of tuberous], however I do not deal with them as with Rex's etc., as tuberous begonias do not respond in the same way. I take young smallish leaves in mid season and cut the stalk about 2" in length. I do not press this into the mix/pumice, but simply sit the cut surface of the leaf stalk on the medium and prop the leaf up using a skewer through the actual leaf. After some four/five weeks the end of the stem will callus over and roots will form and sometimes baby shoots will appear at this point. I then pot them up and let them take their course. With regard to the best time, providing you have bottom heat and lights, they can be taken at any time, oth-

erwise it is preferable to take them early on in the growing season.

*This was excerpted from Begonia News, the newsletter of the New Zealand Canterbury Begonia Circle. You may write Mike Stevens at 47 burnside Crescent, christchurch 8005 New Zealand, or Email him at m.i.stevens@extra.co.nz. He also informs us about a new web site in New Zealand that features tuberous begonias: www.begonia.co.nz (This is Cox's Begonia World).*

---

## Pronunciation of Begniaceae Names for the Begonian 69: January-February, 2002 by Jack Golding

<b>albo-picta</b>	AL-bo - PIK-tuh
<b>angularis</b>	ang-yew-LAY-ris
<b>boliviensis</b>	boh-liv-i-EN-siz
<b>brevirimosa</b>	bre-vir-i-MOH-suh
'Exotica'	ex-OT-ti-kuh
<b>cardiocarpa</b>	kar-di-oh-KAHR-puh
syn. <i>bakeri</i>	BAY-ker-eye
<b>carolineifolia</b>	kar-oh-lin-e-eye-FOH-li-uh
<b>coccinea</b>	kok-SIN-e-uh
<b>convolvulacea</b>	kon-vol-vyew-LAY-se-uh
<b>coriacea</b>	kor-i-AY-se-uh
<b>crassicaulis</b>	kras-si-KAW-lis
<b>cubensis</b>	kyew-BEN-sis
<b>cucullata</b>	kyew-kul-LAY-tuh
var. <b>arenosicola</b>	uh-ren-oh-si-KOH-luh
<b>deliciosa</b>	de-lis-i-OH-suh
<b>dichotoma</b>	deye-KOHT-o-muh
<b>dichroa</b>	DEYE-kroh-uh
<b>digyna</b>	dij-EYE-nuh
<b>dipetala</b>	deye-PET-a-luh
<b>dominicalis</b>	doh-min-i- KAY-lis
<b>dregei</b>	DREG-e-eye
var <b>macbetii</b>	mak-BETH-i-eye
syn. <i>suffruticosa</i>	suf-fryew-ti-KOH-suh
<b>echinosepala</b>	ek-in-oh-SEP-a luh
var <b>elongatifolia</b>	e-long-gay-ti-FOH-li-uh
<b>egregia</b>	e-GREE-ji-uh

**epipsila** e-pip-SIL-uh  
**fagifolia** fag-i-FOH-li-uh  
**fimbriata** fim-bri-AY-tuh  
**fischeri** FISH-er-eye  
**foliosa** foh-li-OH-suh  
   'Toledo'  
**gehrtii** GEHRT-i-eye  
**glabra** GLAYB-ruh  
**glandulosa** gland-yew-LOH-suh  
**grandis** GRAND-is  
   subsp **evansiana** e-van-si-AY-nuh  
**heracleifolia** her-ak-le-eye-FOH-li-uh  
   var. **nigricans** nig-REE-kans  
**hernandioides** her-nan-di-o-EYE-deez  
**hirtella** hir-TEL-luh  
**hispida** HISS-pi-duh  
   var **cucullifera** kyew-kul-LIF-er-uh  
**homonyma** hoh-mon-EYE-muh,  
   syn **rudatisii** rud-a-TIS-i-eye  
**humilis** HYEW-mi-lis  
**hydrocotylifolia** heye-dro-koh-til-i-FOH-li-uh  
  
**incarnata** in-kar-NAY-tuh  
**involucrata** in- vol-yew-KRAY-tuh  
**johnstonii** john-STON-i-eye  
**kellermanii** kel-ler-MAN-i-eye  
**kenworthyae** ken-WORTH-i-ee  
**leathermaniae** leth-er-MAN-i-ee  
**lindleyana** lind-ley-AY-nuh  
**longipetiolata** long-i-pet-i-ol-AY-tuh  
   syn **crassipes** KRAS-si-pes  
**ludwigii** LEWD-vig-i-eye  
**luxurians** lux-YEWR-i-ans  
**macduffiana** mak-duf-fi-EE-ay-nuh  
**maculata** mak-yew-LAY-tuh  
**malabarica** mal-i-BAR-i-kuh  
**metallica** met-TAL-li-kuh  
**micranthera** meye-kran-THER-uh  
   var. **foliosa** foh-li-OH-suh  
**mollicaulis** mol-li-KAW-lis  
**multinervia** mul-ti-NER-i-uh  
**nelumbiifolia** nel-um-bi-eye-FOH-li-uh  
   'Rubra'  
**obscura** obs-KYEW-uh  
**odorata** o-dor-AY-tuh  
   'Alba'  
   syn **suaveolens**  
**opuliflora** o-pul-i-FLOH-ruh  
**oxyloba** ox-i-LOH-buh  
**paleata** pa-le-AY-tuh  
**parvifolia** par-vi-FOH-li-uh

**pearcei** PEARCE-eye  
**peltata** pel-TAY-tuh  
**petasitifolia** pet-uh-si-ti-FOH-li-uh  
**plebeja** ple-BEE-juh  
**polygonoides** pol-i-go-o-EYE-deez  
**popenoei** poh-pen-OH-eye  
**radicans** RAD-i-kanz  
   syn. **sandersii** san-DER-si-eye  
**reniformis** ren-i-FORM-is  
   syn. **vitifolia** veye-ti-FOH-li-uh  
**sanguinea** san-gwin-EE-uh  
**schmidtiana** schmidt-i-AY-nuh  
**sericoneura** ser-i-kon-OO-ruh,  
   syn **hypolipara** heye-pol-i-PAY-ruh  
   syn **pilifera** peye-LIF-er-uh  
**solananthera** soh-lan-ANTH-er-uh  
**soli-mutata** sol-i-myew-TAY-tuh  
**subvillosa** sub-vil-LOH-suh  
   var. **leptotricha** lep-TOH-trik-uh  
**sutherlandii** su-ther-LAND-i-eye  
**tomentosa** toh-men-TOH-suh  
**ulmifolia** ulm-i-FOH-li-uh  
**valida** VAHL-i-duh  
**veitchii** VEECH-i-eye  
**venosa** ven-OH-suh  
**versicolor** ver-si-KOH-lor  
**wollnyi** WOHLL-ni-eye

---

### What Affects Plant Leaves?

Have you ever visited and seen a plant that had the same name as one you grew, but looked very different? When this is not due to a misnamed plant as sometimes happens, it may be that the leaves have been affected differently by growing conditions. Light is one key factor. *B.* 'Maurice Amey' grown outside has a deep lavender color, but inside my low light plant room, the color fades to almost silver. Temperature is another factor. *B. valida* i and its hybrids become in the high heat of summer an almost variegated color with pinks and yellows - the heat locks up some key food elements that the plant needs, producing these colors. Cool temperatures bring out a higher color in most leaves, but especially those of the Rexes. The leaves of plants grown in high humidity will be different in appearance to those in low humidity. Let a plant dry out too much and the color becomes dull and faded.

~FH



# Proposed Change to the Bylaws of the American Begonia Society

During the American Begonia Society Annual Meeting, September 8, 2001, the following proposed Bylaw Change and Addition was approved. This Change and Addition is now being brought before the entire ABS membership for vote. Changes and Additions will be underlined.

## Article IV - Committees

Section 5 - The Standing Committee shall be Finance, Audit, Convention and show (and Show Advisory), Awards, Publications, Judging, Show Classification and Entries, Nomenclature and ABS Grant Review.

Section 6 - The organization and responsibilities of the standing committee shall be as follows:

h - The ABS Grant Review Committee will consist of the Second Vice President as Chairman with the Conservation Chairman and Research Director being permanent members of the committee. Two additional ABS members appointed by the President who will serve a 3-year term, subject to the approval of the Board of Directors. The Committee will receive all applications for requested grants from ABS. The committee will review all applications and make its recommendation in writing to the ABS Board. If there is not a unanimous vote by the committee on the application, two members of the committee will be appointed by the chairman to write a

*Continued on Page 16.*

## Official ABS Ballot

*If there are two ABS members in your household, you will receive a second ballot by mail. Please do not duplicate the ballot.*

*Ballots must be received by February 15, 2002. Votes will be counted February 16, 2002.*

*The Ballot Counting Committee reminds members that the ballot is voided if personal remarks or additions are made on the ballot. Please don't invalidate your vote! Comments may be made on a separate sheet of paper.*

**FOR**

**Against**

## Changes To The Bylaws

***Clip on dotted line and  
Mail this Ballot to:***

***Ballot Counting Chair  
Ingeborg Foo  
1050 Melrose Way  
Vista, CA 92083-6504  
USA***

**Clip & Mail: Must be Received  
by February 15, 2002**

brief dissertation on the pros and  
cons of the application. The com-  
mittee will also recommend to the  
ABS Board on how materials if any  
received from such grants are to be  
distributed to ABS and its members.  
ABS Grant Review Committee  
recommendations are not binding,  
with final decisions being made by  
the ABS Board.

**Ballots are to be received by the  
Ballot Counting Chair by February  
15, 2002. Ballots are to be sent to:**

**Ingeborg Foo  
1050 Melrose Way  
Vista CA 92083-6504**



# Begonian Index 2001

Directory of Begonia Societies - July/August Issue, Page 139  
Convention Issue: Begonias in the Rockies, November/December Issue

## Regular Features

ABS 2001 Ballot 15, 101  
ABS Awards, 2001  
    Recipients 176  
ABS Awards, Nominations  
    59, 60  
ABS Election 2001 15, 100  
ABS Election, 2001 Results  
    84, 239  
Annual Meeting Minutes  
    26, 146  
Begonia Bytes 63, 215  
Begonia Lost and Found 59,  
    127  
Board minutes 26, 92, 143,  
    182  
Coming Events 38, 78, 118,  
    158, 198, 238  
Directory of Begonia  
    Societies 139  
Editor's Notes 48, 100, 163  
Identify this Species 48, 93,  
    144, 188  
In Memory 36, 116, 138, 151  
In the Mailbox 28, 64, 196  
Letters to the Editor 4, 45,  
    84, 124  
New Cultivars 32  
News 74, 114, 195  
Officer's Page 39, 79, 119,  
    159, 199, 239  
President's Message 4, 44,  
    84, 124, 164, 204  
Pronunciation Guide 36, 99,  
    142, 187, 234  
Round Robin Notes 61, 189  
Seed Fund 24, 68, 76, 106,  
    148, 184, 186, 220, 222  
Startin' Out 28, 62, 94

## Articles

Begonias from Costa Rica 9  
SWR/ABS Best in show 14  
Proposed Constitutional  
    Changes & Ballot 15  
SWR/ABS Winners 31  
A Doll in Denver in 2001  
    31  
New Cultivars 32  
In Memory: Bernice  
    Schubert 36  
Message from Membership  
    Chair 44  
*B. 'Alafia'* 50  
Mites 50  
Species Talk: *B. hatacoa*  
    53  
Container Plantings 54  
Growing Begonias in  
    Washington State 56  
2001 Mile High Awards 58  
New Award 60  
Palm Beach Begonia Garden  
    66  
Eva Kenworthy Gray 70  
New England Tropical  
    Conservatory 73  
Begonias with Familiar  
    Names 75  
Soil Preparation 87  
ABS' Miami Branch 2001  
    Show 88  
Begonias Triumph in Palm  
    Beach 90  
*B. hydrocotylifolia* 96  
*B. dichroa* 96  
Election 2001 100  
Ballot 2001 101  
Interview with Joyce  
    Pridgen 103  
*U388* and *U400* 109

Ft. worth Botanic Garden  
    111  
Rudy's 90th Birthday 112  
Write to Ross 115  
In Memory: Paul Riviere,  
    Kay Bradley 116  
2001 Southwest Region Get-  
    Together 128  
A Fictional Short Story 130  
Java, Indonesia 2000 131  
Toward a Philadelphia  
    Branch 135  
Another Begonia Project  
    136  
Directory of Begonia  
    Societies 139  
Garden of Love 145  
In Memory: Maxine  
    Bennett 138  
Winter Board meeting 146  
In Memory: Althea Phillips  
    151  
More SWR Begonias 153  
Terrariums in the Office 154  
A note on the Nov/Dec  
    Begonian 164  
Begonias in the Rockies 166  
Begonias in the Rockies  
    Winners 168  
Best of Show: *B. lanceolata*  
    172  
How to Make a Wall Quilt  
    173  
ABS Annual Meeting 175  
Culture Award Winners 176  
2001 ABS Award Winners  
    176  
Ask Ross 178  
*B. venosa* 179  
Unidentified Begonia 180  
*B. multangula* 181  
Begonias in the Land of the

Olmecs 190  
 Holiday Donors 205  
 A Holiday Welcome 207  
 A Holiday Begonia 208  
 The Begonia of the Socotra  
 Archipelago 209  
 A Semi-tuberous Myth 214  
 Begonias on the Internet  
 214  
 On the Trail of An Unidenti-  
 fied 216  
 The Hoover Seed 222  
 The Mile High Awards 224  
 Begonias Old and New 228  
 Royalty and Magic 230  
 Scott Hoover Photos 232  
 An Unidentified Species  
 from Venezuela 236

**\*Indicates Photo**

**Contributors**

**Artists & Photographers**

Iris Bird 55, 97  
 Cynthia Bishop 208  
 Tamsin Boardman 43, 80  
 Janet Brown 55, 75, 224-5  
 Mary Bucholtz 161, 163,  
 167, 171, 180, 203, 228,  
 230, 240  
 Eleanor Calkins 225  
 Bill Claybaugh 49  
 Marie Costa 145  
 Leora Fuentes 46  
 Joe Giangrasso 6  
 Peter Henderson 179  
 Scott Hoover 121, 123, 160,  
 181, 232-3  
 Mark Hughes 209-211, 213  
 Helene Jaros 31  
 Virginia Jens 155  
 Johanna Kitson 66, 67, 90,  
 136, 137, 216-7  
 Renita Marchant 126  
 Hugh McLauchlan 230  
 Don Miller 33, 108  
 Vera Miller 173  
 Rekha Morris 1, 3, 10, 12,  
 190, 192

Midori Nobusawa 3, 29  
 Doug Pridgen 43, 46, 54,  
 81, 83, 104, 120, 173  
 Joyce Pridgen 8, 163, 167,  
 229, 236  
 Warren Resen 90, 91  
 Dale Sena 75  
 Harish Sharma 6  
 Greg Sytch 46  
 Peter Szilagyi 46  
 Brad Thompson 33, 35  
 Janet Welsh 33  
 Johanna Zinn 73, 201, 203

**Authors**

Iris Bird 96  
 Jane Blundell 53  
 Tamsin Boardman 70  
 Ross Bolwell 115, 125,  
 178  
 Sandy Boyd 214  
 Helmut Brodka 109  
 Janet Brown 112  
 Mary Bucholtz 177  
 Jessica Chevalier 127  
 Nancy Cohen 90  
 Marie Costa 145  
 Jan Doorenbos 86  
 Normand Dufresne 96  
 Ray Filewood 130  
 Laura Forrest 150  
 Leora Fuentes 168  
 Joe Giangrasso 7  
 Kathy Goetz 48, 63, 127,  
 215  
 David Goffi 59  
 Jack Golding 127  
 Judy Gurka 177  
 Virginia Hamann 61, 189  
 Jim Hannah 28, 62, 94  
 Daniel Haseltine 5  
 Leslie Hatfield 85  
 Freda Holley 54, 103, 166,  
 208, 226, 234  
 Scott Hoover 36, 131  
 Mark Hughes 209  
 James Hunter 131  
 Arlene Ingles 44  
 Charles Jaros 4, 44, 84,  
 124

Virginia Jens 138, 154,  
 177  
 Carrie Karegeannes 36  
 Johanna Kitson 127, 136,  
 216  
 Michael Ludwig 47, 58,  
 60, 176, 224  
 Renita Marchant 125  
 Donna McKelvy 45  
 Hugh D. McLauchlan 85  
 Don Miller 109  
 Vera Miller 174  
 Rekha Morris 9, 190  
 Morris Mueller 164, 204  
 Louise Muzyk 56  
 Carol Notaras 116  
 Lawrence X. Oakford 111  
 Patricia O'Dea 179  
 Dominique Permingeat 45  
 Doug Pridgen 47, 88, 214  
 Joyce Pridgen 172  
 Gene Salisbury 32  
 Harish Sharma 5, 87  
 Peter Sharp 206  
 Linda Shires 111  
 Mike Stevens 50, 206  
 Greg Sytch 28, 49, 64, 66,  
 196  
 Peter Szilagyi 45, 59  
 Paula Szilard 206  
 Derek L. Telford 206  
 Brad Thompson 206  
 Bernie Wiener 135  
 J.S. Williams 64  
 Harry Wiriadinata 131  
 Maxine Zinman 176  
 Johanna Zinn 73, 207

**Order Back  
 Issues From:**

**Ann Salisbury  
 Box 452  
 Tonkawa, OK 74653**

**Ph: 580-628-5230  
 E-mail:  
 geneann@kskc.net**



## Individuals

- Chuck Ades 183  
Chuck Anderson 60  
Mabel Anderson 60  
Tim Anderson 88, 108-9, 136  
Tim Anderson 143, 154, 214, 219  
Geoff Apps 139  
Tony Ashton 182  
Sophie Asplind 214  
Elaine Ayers 60  
Donna Bailey 63, 90, 127, 141  
Liberty Hyde Bailey 70  
Jerry Baird 67\*, 84, 92, 183  
Isaac Bayley Balfour 210  
Fred Barkley 36  
Mike Bartholemew 204  
Karen Bartholomew 60  
Phyllis Bates 60, 176, 182, 225\*  
Ed Bates 60, 176, 182, 225\*  
Dorothy S. Behrends 60, 61  
Sylvia Ben 141  
Maxine Benett 138  
Howard Berg 101-2, 185, 195  
Jack Bergstrom 60  
Iris Bird 32, 34, 55, 84, 96, 113\*, 127, 220, 235  
Cynthia Bishop 60, 189, 203  
Joy Blair 113\*, 141  
Mae Blanton 58, 189, 231  
Jane Blundell 53  
Tamsin Boardman 26, 43, 70, 166  
Bruce Boardman 84, 92, 166  
Jack Bohy 189  
Ross Bolwell 115, 125, 178, 206  
Annette Boree 141  
Evelyn Bouquet 24, 68, 106  
Constance Bower 70  
Sandy Boyd 214  
Kay Bradley 116  
Adelaide Brest 60  
Roberto Brinn 24  
Helmut Brodka 109  
Janet Brown 26, 55, 75, 101-2, 112, 118,  
Carmel Brown 151, 224  
Irene Brownlee 177  
Margaret Bruenbaum 60  
Mary Bucholtz 58, 92, 143, 163, 166-7, 170-1, 177, 179, 189, 203, 228, 230, 234  
K. Burt-Utley 86, 127  
Bessie Buxton 60, 71  
Eleanor Calkins 24, 59, 68, 106, 140, 143, 184, 198, 220, 225  
Ethel Calloway 70, 71  
A. de Candolle 93, 217  
Agnes Cazaux 139  
Jessica Chevalier 127  
Bill Claybaugh 28, 49, 93  
Nancy Cohen 66\*-7, 90, 91, 236  
Andy Conely 165-6, 168-9, 170-1,  
Andy Conely 38, 118, 141, 143, 163, 165-6, 168-9, 170-1, 176, 182  
Sean Connery 190  
Mabel Corwin 208  
Marie Costa 145  
Joan Coulat 26, 58, 92, 112, 143, 170  
Louis Cramer 60  
Gary Davis 114  
Jackie Davis 24, 68, 140, 146, 184, 220  
Jeannie Dinsmore 152  
Jan Doorenbos 7, 86, 188, 219  
Normand Dufresne 96, 177  
M.B. Dunkle 60  
J. Duriusseau 220  
Lucille Dyess 29  
Doug Dykes 163, 169  
Eleanor Elston 139  
Mose Fadeem 85  
Margaret Fenn 60  
Greg Ferraro 163  
K. Ferrell-Ingram 23  
Betsy Feuerstein 109  
Ray Filewood 130  
Jack Fisher 7  
Margaret Fisher 113\*, 140  
Mike Flaherty 204  
Ingeborg A. Foo 16, 102, 140, 177, 182, 204  
Laura Forrest 150  
Peggy Fratus 220  
Leora Fuentes 14, 128, 169, 183  
Mary Fuqua 73  
Geraldine Geiger 66\*, 67  
Joe Giangrosso 6  
Judy Gilbert 74  
Piron Gilles 139  
Kathy Goetz 48, 63, 127, 141, 215  
David Goffi 45, 59  
Bob Golden 84, 92, 127, 235  
Jack Golding 26, 127, 142, 216, 218-9, 234  
A. B. Graf 13  
Eva Kenworthy Gray 70, 71  
Ruth Grenier 125  
Judy Gurka 163, 165, 177  
Virginia Hamann 60, 178, 182, 189  
Robert Hamm 231  
Jim Hannah 28, 62, 94  
Joan Hannah 28  
Pam Hantgin 113\*, 114  
Steve Hantgin 114  
Elda Haring 48  
Mona Harvey 144  
Daniel Haseltine 5, 47, 114, 141, 189  
Leslie Hatfield 85, 125, 140  
Carolyn Hawkins 26, 38, 92  
Leigh Heard 220  
Peter Henderson 130, 139, 179  
Lorna Herchenson 139  
Xiomara Herrera 66\*, 67  
Joyce Hesse 140  
Carl Hidalgo 112  
Beverly Hitz 240  
Tan Jiew Hoe 31  
RL Holley 141, 238

- Freda Holley 4, 58, 60,  
 124, 143, 166, 170, 182  
 Scott Hoover 4, 26, 36, 73,  
 123, 131, 135, 143, 179,  
 203, 233  
 John Howell 27, 86, 128,  
 143, 152, 236  
 Beatrice Huckriede 24,  
 220  
 Mark Hughes 150, 195,  
 209, 211  
 James Hunter 131  
 Francis Hunter 90  
 Bruce Illiams 189  
 Arlene Ingles 44, 92, 124,  
 140, 143, 182-3, 235  
 S.W. Ingram 13  
 Helene Jaros 31  
 Charles Jaros 4, 26, 44, 45,  
 67, 75\*, 84, 92, 124, 143,  
 168, 170-2, 182  
 Myrmie Jennings 139  
 Virginia Jens 67, 138-9,  
 146, 154, 156, 177, 229,  
 238  
 Jeanne Jones 113, 140, 235  
 Carrie Karegeannes 36,  
 142  
 Mike Kartuz 74, 220  
 Tom Keepin 114, 136, 141,  
 235  
 C.M. Kelly 60  
 Joan Kessinger 63, 141  
 Marge Kirchoff 60  
 Johanna Kitson 66, 67, 90,  
 127, 136-7, 170, 195, 216,  
 220, 234  
 Houston Knight 74  
 Fina Kramer 170  
 Debbie Lamb 88  
 Shirley Lancaster 139  
 Karen Lawrence 38, 141  
 Diane Lawrey 139  
 Sylvia Leatherman 231  
 Margaret Lee 140  
 I. Alton Lee 141  
 Tom Lemieux 114  
 Cheryl Lenert 102, 114,  
 143, 183, 235,  
 Lu Leonard 142  
 Ruth Littlemore 179  
 Gordon Baker Lloyd 60  
 Ernest Kimball Logee 127  
 Paul Lowe 136  
 Michael Ludwig 26, 47,  
 58, 60, 68, 143, 148, 176,  
 184, 220, 222, 224-5\*  
 Maurine Lunsford 138  
 George Macias 235  
 Richard Macnair 26, 92,  
 101-2, 143, 176, 182-3,  
 224\*  
 Wanda Macnair 60, 114,  
 118, 141, 154, 165, 176,  
 182, 198, 204, 224\*  
 Pauline Mahoney 142  
 Renita Marchant 125, 165  
 Joy Logee Martin 166  
 George N. McCormick 85  
 Elvin McDonald 114  
 Patricia McElderry 112\*-3  
 Bobbie McFadden 152  
 Charles McGough 3, 128  
 Donna McKelvy 45  
 Hugh D. McLauchlan 85,  
 230  
 Don Miller 27, 32, 33, 86,  
 108-9, 128, 141, 153,  
 170, 176  
 Vera Miller 170  
 A.G. Miller 211, 213  
 Rekha Morris 3, 9, 163,  
 190-4  
 Mary Elizabeth Moultrie  
 141  
 Kit Jeans Mounger 49, 58,  
 136  
 Morris Mueller 100, 101,  
 143, 164, 177, 204  
 Louise Muzyk 48, 56  
 Nalini Nadkarni 13  
 Marva Newberry 31  
 Pauline Ney 60  
 Colin Nicklen 139  
 Midori Nobussawa 3, 29,  
 220  
 Armando Nodal, Jr. 83\*,  
 88  
 Carol Notaras 4, 26, 59,  
 92, 101-2, 116, 118, 140,  
 143, 182  
 Irene Nuss 112-3\*, 235  
 Lawrence X. Oakford 102,  
 111  
 Patricia O'Dea 179  
 Thelma O'Reilly 68, 109,  
 112, 220, 236  
 Joy Paris 113\*  
 Ramona Parker 112, 140  
 Beverly Paulson 140  
 Peggy Payne 60, 189  
 Sara Jane Pearman 141  
 Mary Pearson 235  
 Ruth Pease 112  
 Walter Pease 112  
 Dominique Permingeat 45  
 M. Thrumand Peterson 60  
 Althea Phillips 151  
 Vanessa Plana 150, 212  
 Lawrence Pope 235  
 Doug Pridgen 43, 47, 55,  
 83, 88, 104, 172, 214,  
 220  
 Joyce Pridgen 43, 55, 83,  
 86, 88, 103-4\*, 163, 167-  
 8, 170, 172, 176, 228,  
 236  
 Mary Rafferty 63  
 Polly Reed 90  
 Elda Regimbal 32, 228  
 Jean Resen 66\*, 67  
 Warren Resen 66\*, 67, 91  
 Paul Riviere 116  
 Richard Robinson 228  
 Angela Rothstein 177  
 Paul Rothstein 177  
 Lois Rowland 189  
 Mary Sakamoto 32, 34,  
 59, 84, 113\*, 124, 140,  
 183, 198, 204, 225\*  
 Ann Salisbury 26, 58-9,  
 92, 143, 177, 182, 195,  
 204, 220, 235  
 Gene Salisbury 26, 32, 58-  
 9, 116, 128, 141, 183,  
 224\*  
 Bill Schramm 114  
 Mimi Schramm 85, 114  
 Bernice G. Schubert 36  
 Melba Schultz 141  
 Chiara Seccovini 24  
 Dale Sena 75, 88, 92, 190  
 Ted Shaffrey 112

- Harish Sharma 5, 6, 86, 87  
 Bimoi Sharma 87  
 Peter Sharp 206, 214  
 Linda Shires 102, 111  
 Charles Sibley 89  
 Mary Sizemore 109  
 Lyman B. Smith 36, 219  
 M.S.M. Sosef 188, 219  
 Stanley Spaulding 60  
 Laura Spear 166  
 Tim Spear 166  
 Lee Stakewicz 90  
 Joseph Staresinic 90, 91  
 Becky Steve 7  
 Mike Stevens 28, 50, 139, 206  
 Naron Stewart 27  
 Jack Street 178  
 Mildred Swyka 60, 189  
 Greg Sytch 28, 47, 49, 64, 66, 136, 196, 214  
 Peter Szilagyi 45, 59, 86  
 Paula Szilard 163, 206  
 Mae Tagg 60  
 Akira Tanaka 114, 177, 195  
 Nikki Y. Taussig 141, 195  
 Gretchen Taylor 60  
 Joan Taylor 220  
 Mark Tebbitt 238  
 Derek L. Telford 206  
 Brad Thompson 3, 32-5, 60, 92, 136, 176, 182, 206, 215, 220, 225\*  
 Mildred Thompson 85, 92  
 Paul Tsamtis 140  
 Mike Twyford 88, 89  
 Naoyuki Uemura 140  
 Wallace Wagner 102  
 Bill Wall 5  
 Dieter C. Wasshausen 219  
 Vera Wells 60  
 Charles L. Wells 9  
 Janet Welsh 33  
 H. Linwood White 60  
 Debbie White 213  
 Jean Whitten 139  
 Bernie Wiener 135  
 J.J. F. E. de Wilde 219  
 Dianna Wilkerson 71, 95, 100, 154  
 Marie Wilkes 60  
 Herb Wilkinson 204, 235  
 J.S. Williams 64  
 Bruce Williams 60  
 Harry Wiradinata 131  
 Patrick Worley 43, 45, 208, 215  
 Rudy Ziesenhenne 74, 75\*, 84, 112-3\*, 140, 166, 183, 188, 204  
 Maxine Zinman 182, 185  
 Johanna Zinn 26, 73, 92, 168-9, 176, 203, 207
- Begonias**
- Hybrids**
- Begonia*
- Abudabi 136\*-7  
 Agnes Hodgson 61, 189  
 Alafia 49\*  
 Alice N 189  
 Amaterasu 61  
 Amelia 32  
 Ann Salisbury 189  
 Anna Christine 98  
 Audrey Brenda 29\*  
 Ballet 127  
 Barbara Lepisto 59  
 Benitochiba 48  
 Bethlehem Star 168  
 Black Cauldron 46\*, 47, 67\*  
 Black Coffee 136  
 Bo Peep 127  
 Bokit 32, 33, 89  
 Boomer 103  
 Barbara Lepisto 59  
 Benitochiba 48  
 Bethlehem Star 168  
 Black Cauldron 46\*, 47, 67\*  
 Black Coffee 136  
 Bo Peep 127  
 Bokit 32, 33, 89  
 Boomer 103  
 Brown Eyes 136\*, 137\*, 168, 170  
 Bumblebee 67, 186, 222  
 Buttercup 154, 155\*  
 Cachuma 149  
 Cajon Valley 8\*
- Calla Lily 127  
 Calla Lily Double 127  
 Caravan 221  
 Caribbean Prince 201\*, 203, 207  
 Charles Jaros 75\*, 76  
 Charm 56  
 Christmas Candy 208\*  
 Cleopatra 32, 33, 115, 186  
 Col. Gale 168  
 Corazon Rojo (Syn. Red Heart) 203, 240\*  
 Cowardly Lion 49, 88, 89\*, 235  
 Crestabruchii 168  
 Curly Metallica 59  
 Curly Stormy Night 34, 35\*  
 Dainty Maid 127  
 Dancing Girl 56  
 Deja Thorus 88  
 Di-Anna 98  
 Di-Anna x 128, 152\*  
 Di-Erna 98  
 Di-Shasta 98  
 Doublet 189  
 Dragon Wings 167\*, 170, 189, 208  
 Dragon's Blood 189  
 Eldorado 89  
 Erythrophylla 115  
 Esther Albertine 152\*  
 Eunice Gray 138  
 Euphrates 32, 33\*  
 Fire Opal 59  
 Firedance 59  
 Floribunda 168  
 Freddie 84, 126\*, 168,  
 Frostland 168  
 Gideon 170  
 Glamour Rose Picotee 208  
 Glory of St. Albans 59  
 Green Giant 41  
 Happy New Year 108  
 Hastor 41\*, 43  
 Helene Jaros 59  
 Holley Moon 128  
 Huopo 59  
 Hyroglyphics 34, 35\*, 168  
 Immense 186  
 Jean Herr 188  
 Jeopardy 136-137\*



Jelly Roll Martin 167\*  
Jim Wrytzen 170  
John R. 168  
John Sousa 59  
Jumbo Jet 32, 186  
Kelton Parker 168  
Kensington 107  
Kentwood 186  
Lalomie 170  
Lenore Olivier 98  
Leopon 168  
Leslie Lynn 107  
Lillian 59  
Lilly of the Valley 29  
Little Brother Montgomery  
189  
Little Miss Mummey 32,  
33\*, 151, 226  
Lois Covey 59  
Lone Star 47  
Lonesome Dove 27\*  
Lowe's Pet 136  
Luscious 127  
Mabel Corwin 56  
Manuel 230  
Margaritacea 29  
Margarite 70  
Marmaduke 168  
Mary Sakamoto 59  
Medora 70  
Mem. Bernice Ryan 136\*,  
137\*  
Merry Christmas 208  
Midnight Magic 230\*  
Midnight Sun 235  
Millie Thompson 59  
Miniperba 88\*, 170  
Mirage 136, 137\*  
Moon Maid 45, 46  
Mother Goose 127  
Ms. Elizabeth McLaughlan  
85  
Muddy Waters 168  
Neely Gaddis 70  
Nelly Bly 70  
November Frost 136  
Ojai 59  
Old Lace 127  
Orange Glow 170  
Orange Rubra 98  
Orell 170

Organza 59  
Palmgarten 59  
Palomar Fanfare 107, 221  
Passing Storm 29\*  
Paul's Pride 81\*, 83  
Peggy Frost 34  
Peridot 170  
Perry Ann 127  
Phython 136\*  
Pied Piper 127  
Pinafore Sport 27  
Pink Rubra 138  
Pink Supreme 98  
Pistachio 127  
President Carnot 76  
Prince Charming 59  
Red Heart (See Corazon  
Rojo)  
Richard Robinson 228  
Ricinifolia 126  
Rip Van Winkle 8  
River Nile 33\*  
Robert George 59  
Rose Supreme 98  
Rubena 59  
Rudy 75\*  
Santa Ynez 168  
Scarlet Supreme 98  
Selover 56  
Shiloh 136\*, 137, 168  
Sierra Mist 136\*, 137\*  
Sierra Silver Rose 168  
Silver Jewell 136  
Silver Swastika 59  
Silverheart 59  
Silvermist 27, 59, 170  
Sisquoc 83, 120\*  
Small Change 128\*, 168,  
170, 176  
Solid Silver 76  
Streaky Jeans 136, 137\*  
Sunbar 168  
Suncana 47  
Superba Azella 70  
Superba Kenzii 70  
Superba Mentone 70  
Sweet Diane 59  
Tea Rose 56  
Tiger Kitten 8, 136\*, 137\*,  
168  
Tondelayo 59

Tsunami 76  
Venepi 179  
Walley's World 168  
Washington State 66\*, 67\*  
Wild Orange 61  
Wild Pony 136, 137\*  
Winkie 127  
Winning Way 138  
Withlacoochee 114

## Species

### *Begonia*

*acetosa* 142, 151, 152\*  
*acida* 93, 99  
*acutifolia* 132, 142, 223  
*albo picta* 168, 170  
*angularis* 168  
*angulata* 68-9, 99, 221, 234  
*arborescens* var. *oxyphylla*  
142, 144\*  
*bakeri* (see *cardiocalpa*)  
*barkeri* 84, 85, 99, 123\*,  
127, 142, 168, 187, 171\*,  
191, 194  
*bipinnatifida* 128, 142  
*biserrata* 68-9, 99  
*boissieri* 221, 234  
*boliviensis* 69, 99, 168,  
169\*, 210, 221, 234  
*bowerae* 115  
*bowerae* var. *nigramarga*  
83, 99  
*bracteata* 131, 223  
*brooksii* 43  
*cardiocalpa* 68-9, 85, 99,  
127, 142, 186-7  
*carolineifolia* 55\*, 186-7,  
191, 193, 194  
*carpinifolia* 86, 93, 99  
*carrierae* 32, 34, 36, 83, 89,  
99, 142, 151  
*castaneifolia* 73, 99  
*chlorosticta* 45, 46  
*cinnabarina* 24, 36, 64, 76,  
221, 234  
*coccinea* 24, 36, 57, 186-7  
*conchifolia* 99, 115  
*cooperi* 13, 36  
*coriacea* 142, 156, 170,

- 186-7  
*crassicaulis* 186-7, 221, 234  
*crassipes* (see *longipetiolata*)  
*crispula* 142, 156  
*cubensis* 56  
*cubensis* (syn. *lindeniana*) 221, 234  
*cucullata* 55\*, 99  
*cucullata* var. *arenicola* 99, 106, 187  
*deliciosa* 75, 76, 99, 188  
*dichotoma* 73, 99, 221, 234  
*dichroa* 68-9, 96-7\*, 99  
*dipetala* 7, 8\*, 73, 86, 99  
*dominicalis* (syn. *suavoelens*) 186-7  
*dregei* 45, 54\*, 99, 142, 153\*, 178, 186-7, 210, 214\*, 234  
*dregei* (syn. *suffruticosa*) 186-7  
*dregei* (syn. *partita*) 103  
*dregei* var. *macbethii* 186-7  
*echinosepala* 57, 68-9, 99, 142, 148, 168, 187  
*echinosepala* var. *echinosepala* 186-7  
*echinosepala* var. *elongatifolia* 68-9, 99, 170, 186-7  
*egregia* 99, 106, 142, 151, 168, 186-7  
*epipsila* 186-7  
*estrellensis* 13\*  
*fisheri* 45, 99, 186-7  
*fissistyla* 34, 36, 76  
*foliosa* 57, 151, 186-7  
*foliosa* 'Toledo' 221, 234  
*frigida* hort. 86, 99  
*gehrtii* 142, 151, 186-7  
*glabra* 13, 36, 73, 93, 99, 186-7, 203, 234  
*glandulosa* (syn. *dayi*) 107  
*glandulosa* 106, 186-7  
*gracilis* var. *martiana* 221, 234  
*grandis* ssp. *evansiana* 48, 99, 168, 186-7, 198  
*hatacoa* 43\*, 53, 75, 76, 99  
*hatacoa* (syn. *rubrovenia*) 53, 76, 99  
*hatacoa* (syn. *barbata*) 99  
*hatacoa* 'Spotted' 76  
*hatacoa* var. *meisneri* 53, 99  
*heracleifolia* 55\*, 115, 191, 194, 221, 234  
*heracleifolia* var. *nigricans* 186-7  
*heracleifolia* var. *sunderbruckii* 107  
*herbacea* 99, 106, 142, 156  
*hernandioides* 170, 221, 234  
*heydei* 1, 3\* (uncertain Id.), 13, 86, 99  
*hirtella* 86, 99, 131, 186-7  
*homonyma* (syn. *rudatissi*) 186-7  
*humilis* 99, 170, 186-7  
*humilis* var. *porteriana* 99, 106  
*hydrocotylifolia* 96, 97\*, 99, 106, 186-7  
*imperialis* 43, 99  
*incarnata* 43, 64, 99, 192\*, 221, 234  
*incisa* (Incorrect Id.) 216-9  
*involucrata* 13, 36  
*isoptera* 131, 223  
*johnstonii* 99, 106, 186-7  
*kellermanii* 61, 99, 142, 148, 186-7, 189  
*kenworthyae* 24, 36, 76  
*kuhlmannii* 186-7  
*lanceolata* 163, 168, 176, 172, 173\*  
*leathermaniae* 170, 221  
*leprosa* 14\*  
*limprichtii* 142, 151  
*lindeniana* (see *cubensis*)  
*lindleyana* 186-7  
*longifolia* 73, 131, 134, 142, 223  
*longimaculata* 59, 99  
*longipetiolata* 203 (Syn *crassipes*), 234  
*lubbersii* 57, 132  
*ludwigii* 75, 99, 142, 149, 186-7  
*luxurians* 73, 99, 103, 104\*  
*luzonensis* 142, 156, 168  
*lyman-smithii* 99, 186-7  
*macduffiana* 221, 234  
*maculata* 170  
*malabarica* 7, 73, 99 (See *dipetala*)  
*manicata* 48, 55\*, 99, 115  
*manicata* 'Aureomaculata' 84  
*mannii* 73, 99  
*masoniana* 44, 99, 168, 170, 234  
*masoniana* 'Tricolor' 44  
*masoniana* var. *maculata* 59, 99  
*mazae* 99, 115  
*metallica* 68-9, 99, 221, 234  
*micranthera* 99  
*micranthera* var. *foliosa* 186-7  
*micranthera* var. *venturii* 68-9, 99  
*microsperma* 142, 154, 155\*, 156  
*mollicaulis* 24, 36, 76, 186-7  
*multangula* 131-2, 134, 142, 163, 179, 181\*, 223  
*multinervia* 186-7  
*muricata* 131, 142, 222-3  
*nelumbiifolia* 24, 36, 76, 186-7, 191, 192\*, 193  
*nigritarum* 128, 129\*  
*obscura* 186-7  
*octopetala* 69, 99  
*odorata* 'Alba' 70  
*olsoniae* 99  
*opuliflora* 221, 234  
*oxyphylla* (See *arborescens* var. *oxyphylla*)  
*paleata* 93, 99, 142, 149, 221, 234  
*parilis* 48, 99, 170  
*parvifolia* 186-7, 234  
*paulensis* 189  
*pearcei* 55\*, 221, 234  
*peltata* 142, 151, 186-7  
*petasitifolia* 69, 99, 221, 234  
*platanifolia* 170  
*plebeja* 24, 36, 43, 48, 76, 99

*popenoei* 75, 99, 186-7  
*prismatocarpa* 61, 99, 154, 156  
*prismatocarpa* 'Variegation' 168, 169\*, 170, 176  
*pustulata* 61, 99, 132, 142, 170, 171\*  
*quadrialata* var. *quadrialata* 188\*  
*quadrialata* var. *nimbaensis* 188\*  
*radicans* 186-7  
*rajah* 142, 156  
*ravenii* 25, 36, 76  
*reneformis* 48, 69, 99, 142, (Syn. *vitifolia*) 186-7  
*rex* 6, 61, 76, 99  
*robusta* 121\*, 123, 131, 132, 134, 142, 223  
*rockii* 186-7, 222  
*rosiflora* (See *veitchii*.)  
*rotundifolia* 142, 156  
*sanguinea* 142, 151, 186-7  
*sarmentacea* hort. 99, 107  
*schmidtiana* 170, 186-7  
*seemaniana* 69, 99  
*sericoneura* 86, 99, (syn. *hypolipara*) 186-7 (syn. *pilifera*) 186-7  
*sharpeana* 47  
*socotrana* 195, 209\*-213\*  
*solananthera* 55\*, 222, 234  
*solimutata* 137\*, 142  
*sonderiana* 186-7  
*staudtii* 61, 99  
*strigillosa* 13, 36  
*subnummularifolia* 142, 156  
*subvillosa* 56, 186-7  
*subvillosa* var. *leptotricha* 187  
*sudjanae* 69, 99  
*sutherlandii* 234  
*tenuifolia* 47, 99, 223  
*theimei* 168  
*thelmae* 142, 151  
*tomentosa* 186-7  
*U002* 128, 129\*  
*U010* 44, 203  
*U014* 127, 208  
*U017* 127  
*U019* 127  
*U020* 127  
*U023* 127  
*U024* 127  
*U025* 127  
*U043* 170, 222  
*U049* 186  
*U062* 48, 186  
*U067* 170  
*U074* 186  
*U076* 216-7\*, 218-9  
*U076* 156 (Incorrect Id. as *U170* and *incisa*), 216-7\*, 218-9  
*U083* 48, 222  
*U135* 189  
*U237* 69  
*U303* 228\*  
*U315* 149, 201\*, 203  
*U331* 186  
*U336* 186  
*U340* 186  
*U348* 186  
*U353* 186  
*U354* 186  
*U358* 27\*, 86  
*U380* 233\*  
*U383* 233\*  
*U388* 108\*, 109  
*U394* 232\*-3  
*U400* 108\*, 109  
*U402* 236\*  
*U404* 153\*, 170  
*U412* 223  
*U413* 223  
*U414* 223  
*U415* 223  
*U416* 223  
*U417* 223  
*U418* 223  
*U419* 223  
*U420* 223  
*U421* 223  
*U422* 223  
*U422* 223  
*U423* 223  
*U424* 223  
*U425* 223  
*U427* 223  
*U429* 223  
*U430* 223  
*ulmifolia* 170, 186-7  
*undulata* 178  
*veitchii* 69, 99, 210, 222, 234  
*velloziana* 163, 187  
*venosa* 55, 57, 163, 168, 171\*, 176, 179\*, 186-7  
*versicolor* 142, 165  
*wallichiana* 170  
*wollnyi* 167

## Join the Southwest Region/ABS

- \* You must be a member of ABS, but do not have to live in the Southwest.
- \* You will receive the 12 page *Begonia Leaflet* in alternate months with the *Begonian* complete with a color photograph by Don Miller and a lot of information on begonia species and hybrids. Edited by former *Begonian* editor Tamsin Boardman.

**Individual \$10; Family \$15; commercial \$25; Branch \$10; Foreign \$15**

Send check made payable to SWR/ABS to:  
 Leora Fuentes, 2200 Glen Forest Lane, Plano, TX 75023



## Editor's Notes...

The poor printing of the color photos in the last issue and its lateness have sent us at last to seek a new printer. Since this issue will be done in uncharted waters, I can only hope for the best. Please be patient while we seek an affordable solution to our printing problems. I am sorry as you must know not only for your sake and that of the editor who strives to bring you a quality journal, but most of all for the contributors whose work was slighted in the last two issues.

Late freezes are in some ways my worst enemy. Early in the fall, I begin to bring my plants in for the winter. By the time of the first threatened freeze, I've saved all the best plants. Then, if that freeze frizzles, a few more will come in with each day's delay in that fatal freeze. One coming as late for us as this year - not yet as of the third week in November, results in plants so jammed in my space that moving about invariably tips over a plant or two. It would be nice to be able to follow the expert's recommendations to space plants generously apart and not touching! But my plant room mimics the jungle of nature and despite the close quarters, I find it satisfying. Each individual plant may not look its best, but the overall canopy of plants is pleasing - and there are so many to study and care for. For one whose greatest joy is setting seed and propagating new plants, it works.

Thanks to the generosity of our photographers, I have a number of very good photos that I am holding to run with an appropriate article. Someone suggested, that I should list some of those to inspire some of you to write about these plants. One I would love to have a good article about is *B. metallica*. Others include *B. squamulosa*, *U346*, *B. hispida* var. *culcifera*, *B. involucrata*, *B. crassipes*, *B. 'Lalomie'*, *B. breviformis* (syn. *B.*

*exotica*) - I have several beautiful photos of this one, *B. 'Homosassa'*, *B. 'Paul Hernandez'*. I'd also like articles about trailing/scandent begonias - not a lot has been written about these: *B. 'Fragrant Beauty'*, *B. 'Withlacochee'*, *B. 'Spotches'*, and any of the species - *B. solonanthera*, *radicans*, *glabra*, *convolvulacea*, *fagifolia*, and all those African trailers such as *B. polygonoides*. I have photos waiting for several of these, but not all. I still would like articles about shrubs also. Remember these articles don't have to be long - just a few paragraphs about how you grow them.

And speaking of photos, I'd love to have some taken of Scott Hoover's unidentifieds in cultivation to run along side the photos he provides of the plants in their native habitats. Also remember, photos of named plants with their namesakes such as the *B. 'Anna Lee Salisbury'* of this issue are always of interest.

Most of all, I'd like to see articles about what interests you in growing begonias. Chances are what interests you will interest someone else. I'm really running short of articles now and I do like to have a little backlog. By the way, if anyone knows how to do it, I would also love to have an article about fighting *scale* -- it would help the editor for one thing! My plants have an infestation that won't quit and all my efforts at getting rid of it have failed. I think I have about 4 different kinds of *scale* - maybe more?

Special thanks to all the contributors of this issue. An index issue is usually somewhat dull, but I think the articles contributed this time make it rather special.

'Letters to the Editor' has proven to be a popular feature - join the fray and voice your ideas and thoughts today!

~ FH

Begonias plus fragrant and flowering  
tropicals!

**LOGEE'S GREENHOUSES**

**141 North Street**

**Danielson, CT 06239**

Phone toll free: 888-330-8038

Or visit our Website

**Begonia Cuttings and Plants**

Send \$2.00 for 2002 list

**Kay's Greenhouses**

207 W. Southcross Blvd.

San Antonio, TX 78221-1155

**LOS ANGELES INTERNATIONAL  
FERN SOCIETY**

INVITES YOU TO JOIN

GROW HARDY AND TROPICAL FERNS  
MEMBERSHIP INCLUDES:

SUBSCRIPTION TO THE LAIFS JOURNAL  
(6 ISSUES) WITH FERN LESSONS,  
SPORE STORE, BOOK STORE, SUPPLY  
STORE, LENDING LIBRARY, GENERAL  
MEETINGS

HAVE LARGE PLANT TABLES

DOWNEY STUDY GROUP

SOUTH COAST STUDY GROUP

PLEASE SEND YOUR CHECK OR MONEY  
ORDER OF \$20.00 OR \$24.00 FOR  
FIRST CLASS TO:

LOS ANGELES INT'L FERN SOCIETY  
P.O. BOX 90943 PASADENA, CA  
91109-0943

*Join the National*

**Fuchsia Society**

MEMBERSHIP \$15 per year includes bi-  
monthly FUCHSIA FAN. The new A to Z  
on Fuchsias abridged version \$6.95 plus  
\$1 shipping (CA residents add \$.42 tax.)

Mail to: National Fuchsia Society,  
11507 E. 187 St., Artesia CA 90701

**LAURAY of SALISBURY**

Begonias, Gesneriads, Orchids  
Cacti & Succulents

432 Undermountain Road, Rt. 41

Salisbury, CT 06068-1102

Call ahead (860) 435-2263

2001-2 Catalog \$2.00

<http://www.Lauray.com>

**Advertise in the Begonian**

**Contact:**

**Ann Salisbury**

**Ph: 580-618-5230**

**E-mail: [anngene@cableone.net](mailto:anngene@cableone.net)**

***Begonias International***

**Come to Houston**

**May 29-June 2, 2002**

**Experience Begonias As You Never Have  
Before!**



**THE AMERICAN  
IVY SOCIETY INC**

hardiness testing, life-sized photos of ivies. Each member also receives an ivy plant.

Membership: General \$20; Institutional \$30; Commercial \$50.

Information: **American Ivy Society, P.O. Box 2123, Naples, FL 34106-2123**

**Pacific Horticulture**

*a quarterly journal about plants and gardens of the West*

PUBLISHED BY THE NON-PROFIT PACIFIC HORTICULTURE FOUNDATION

MAKES A FINE GIFT FOR GARDENERS!

SUBSCRIPTIONS ARE \$20/YEAR USA, \$23/YEAR CANADA AND MEXICO, \$25/YEAR OTHER COUNTRIES

SEND CHECK, VISA OR MASTER CARD TO:

PHF, Box 485, BERKELEY CA 94701-0485

# Clayton M. Kelly Seed Fund Listing

The Margaret Lee Branch, San Diego County, CA  
Michael Ludwig, Administrator

*The seed fund is a service to members only. It is a privilege of your membership.*

**DISCLAIMER:** The seeds distributed by the seed fund are identified as received from the donors. The seed fund cannot guarantee that the identification is correct. The species names (in italics) reported here are correct based on the latest information from **BEGONIACEAE**, Ed. 2 manuscript of 14 December 2000; Golding and Wass-hausen.

When you find that seeds received from the seed fund do not develop into the plant described please notify the Seed Fund so that a warning can be published for others who may have received seeds from the same batch. Each offering is identified by a code to be used whenever writing to the Seed Fund about the seeds. The descriptions published are from the literature and apply to the name used for the offerings.

The Seed Fund needs donations of seeds. Seeds may be traded for listed seeds. Seeds may be ordered from the master list by name. If you have a special need ask the Seed Fund Administrator.

**The need for new seeds to distribute is acute. Please pollinate your species begonias with pollen from other plants of the same species and contribute (or exchange) to the seed fund.**

Most packets of species seeds are \$1.50; all packets of hybrids (including open pollinated) seeds are 50¢ per packet. Very rare seeds and newly collected seeds will be \$2.00 or more per packet. California residents please add 7.75 % sales tax. All orders must be accompanied by check or money order, **payable in US funds ONLY**, to **The Clayton M. Kelly Seed Fund**.

## Costs of mailing:

**US only:** 1-12 packets \$1; 13-24, \$1.35; 25-36, \$1.71; 37-48 (2 cans), \$2.30; 49-60, \$2.66.

**Canada only:** 1-12 packets, \$1.10; 13-24, \$1.46; 25-36, \$1.82; 37-48 (2 cans) \$2.35; 49-60, \$2.71.

**Mexico only:** 1-12 packets, \$1.15; 13-24, \$1.51; 25-36, \$1.87; 37-48 (2 cans), \$2.50; 49-60, \$2.81.

**All other international mail:** 1-12 packets, \$1.85; 13-24, \$2.68; 25-36, \$3.68; 37-48, \$4.68; 49-60, \$5.68. Please send your order with payment to:

**AMERICAN BEGONIA SOCIETY  
CLAYTON M. KELLY SEED FUND  
Michael Ludwig  
6040 Upland St.  
San Diego, CA 92114-1933**

The CLAYTON M. KELLY SEED FUND is a project of the Margaret Lee Branch of the ABS in San Diego County, California..

Thank you to recent donors for their seed donations: **Yoshiko Azuma, Jackie Davis, Michael Ludwig, Midori Nobusawa, Morris Mueller, Thelma O'Reilly, Joan Taylor.**

## Seed List

January-February 2002

All offerings in limited supply--cost \$2 per packet

**JF02-01:** *B. digyna*

**JF02-02:** *B. oxyloba*

**JF02-03:** *B. soli-mutata*

**JF02-04:** *B. versicolor*

**JF02-05:** *B. U008*

**JF02-06:** *B. U237*

**JF02-07:** *B. U252*

**JF02-08:** *B. U313*

**JF02-09:** *B. U320*



## DESCRIPTIONS

**JF02-01:** *B. digyna* Irmscher (sect. *Platycentrum*) China. No description available.

**JF02-02:** *B. oxyloba* Welwitsch ex J. D. Hooker (sect. *Mezeireia*) Tropical Africa & Madagascar. For picture and article see *Begonian* June 1981: 136-138. Large, variable species with jointed rhizome and erect stems. Leaves can be palmately lobed or entire, and flowers are pale pink with berry-like fruits.

**JF02-03:** *B. soli-mutata* Smith & Wasshausen (sect. *Pritzelia*) Brazil. Rhizomatous; rough textured leaves, light green in the center and along the nerves, deeper olive to dark brown depending on light, reverse and petioles deep red; flowers white. See article *Begonian* Nov. 1990:217-220.

**JF02-04:** *B. versicolor* Irmscher (Sect. *Platycentrum*) China. Rhizomatous; small, distinctive foliage, salmon pink blooms. Requires terrarium care. 70 to 90 days for germination.

**JF02-05:** *B. U008 = B. subvillosa* Shrub-like, medium leaved, kidney-shaped light green leaves covered densely with silvery white hairs. Upright, branching. White flowers flushed pink year-round. Source: Hungarian Botanical Gardens.

**JF02-06:** *B. U237* Ecuador. Tuberous with cane-like habit. Found on exposed south-facing rock cliff at elevation 3900 ft.

**JF02-07:** *B. U252* Domenica, West Indies. Stem erect, 2-3 ft high, branched, green flushed tan, pubescent, turning woody with age; blades ovate, cordate, medium green, glabrous, glossy above, pale green glabrous with pubescence on raised nerves beneath, apically acuminate, marginally dentate, serrulate; petioles green suffused with red, 3-4 in., pubescent; peduncles 5-9 in glabrous, pedicels ½ in, flowers pink to white, fragrant.

**JF02-08:** *B. U313* No description available.

**JF02-09:** *B. U320* Ecuador. Similar to U237 above. see *Begonian* Nov. 1995:208

## MASTER SEED FUND INVENTORY-- JANUARY 2002

### SPECIES

1. JF02-*angularis* Raddi
2. JF02-*boliviensis* A. de Candolle

3. JF02-*cardiocarpa* syn. *bakerii* C. de Candolle
4. JF02-*cardiocarpa* Liebmann
5. JF02-*carolineifolia*
6. JF02-*coccinea* W. J. Hooker
7. JF02-*coriacea* Hasskarl
8. JF02-*coriacaulis* Lindley
9. JF02-*cubensis* Hasskarl
10. JF02-*cucullata* Willdenow var *cucullata*
11. JF02-*deliciosa* Linden ex Fotsch
12. JF02-*dichotoma* Jacquin
13. JF02-*dichroa* T. A. Sprague
14. JF02-*dipetala* Graham
15. JF02-*dominicalis* A. de Candolle
16. JF02-*dregei* Otto & Dietrich
17. JF02-*dregei* Otto & Dietrich (syn. *suffruticosa*)
18. JF02-*dregei* Otto & Dietrich var *macbethii* L. H. Bailey
19. JF02-*echinosepala* Regel
20. JF02-*echinosepala* Regel var. *elongatifolia* Irmscher
21. JF02-*egregia* N. E. Brown
22. JF02-*egregia* open pollinated
23. JF02-*epipsila* Brade
24. JF02-*fisheri* Schrank
25. JF02-*foliosa* Kunth
26. JF02-*foliosa* Kunth 'Toledo'
27. JF02-*gehartii* Irmscher
28. JF02-*glabra* Aublet
29. JF02-*glandulosa* W. J. Hooker
30. JF02-*grandis* Dryander subsp. *evansiana* Andrews
31. JF02-*grandis* bulbils
32. JF02-*heracleifolia* Schlehtendal & Chamisso (collected in Palenque, Mexico)
33. JF02-*heracleifolia* Schlehtendal & Chamisso (Ziesenhenné says this is the true species.)
34. JF02-*heracleifolia* Schlehtendal & Chamisso var *nigricans* J. D. Hooker
35. JF02-*hernandioides* Merrill
36. JF02-*hirtella* Link
37. JF02-*humilis* Dryander
38. JF02-*hydrocotylifolia* Otto ex W. J. Hooker
39. JF02-*sericoneura* Liebmann (syn. *hypolipara* Sandwith)
40. JF02-*incarnata* Link & Otto
41. JF02-*incarnata* Link & Otto 'Sandersii'
42. JF02-*johnstonii* Oliver ex J. D. Hooker
43. JF02-*kellermanii* C. de Candolle

44. JF02-*leathermaniae* O'Reilly & Karageannes
45. JF02-*lindleyana* Walpers
46. JF02-*ludwigii* Irmscher
47. JF02-*luxurians* Scheidweiler
48. JF02-*macduffieana* Smith & Schubert
49. JF02-*metallica* W. G. Smith--limited amount
50. JF02-*micranthera* Grisebach var *foliosa* Smith & Schubert
51. JF02-*mollicaulis* Irmscher
52. JF02-*multinervia* Liebmann
53. JF02-*nelumbiifolia* Schlechtendal & Chamisso
54. JF02-*nelumbiifolia* Schlechtendal & Chamisso 'Rubra'
55. JF02-*obscura* Brade
56. JF02-*odorata* Willdenow 'Alba'
57. JF02-*opuliflora* Loudon
58. JF02-*paleata* Schott ex A. de Candolle
59. JF02-*parvifolia* Schott
60. JF02-*peltata* Otto & Dietrich
61. JF02-*petasitifolia* Brade
62. JF02-*sericoneura* Liebmann (syn. *pilifera*) A. de Candolle
63. JF02-*plebeja* Liebmann
64. JF02-*popenoei* Standley
65. JF02-*radicans* Vellozo
66. JF02-*homonyma* Steudel (syn. *rudatisii* Irmscher)
67. JF02-*sanguinea* Raddi
68. JF02-*schmidtiana* Regel
69. JF02-*odorata* Willdenow (syn. *suaveolens* Loddiges)
70. JF02-*subvillosa* Klotsch
71. JF02-*subvillosa* Klotsch var *leptroricha* Smith & Wasshausen
72. JF02-*sutherlandii* J. D. Hooker
73. JF02-*tomentosa* Schott
74. JF02-*ulmifolia* Willdenow
75. JF02-*valida* Goebel
76. JF02-*veitchii* J. D. Hooker
77. JF02-*venosa* Skan
78. JF02-*reniformis* Dryander (syn. *vitifolia* Schott)
79. JF02-*wolnyi* Herzog
80. JF02-U #043
81. JF02-U #049
82. JF02-U #074
83. JF02-U #083
84. JF02-U #172

85. JF02-U #176
86. JF02-U #315
87. JF02-U #331
88. JF02-U #336
89. JF02-U #340

#### HYBRIDS & CULTIVARS

90. JF02-'Bumblebee' (*pearci* x unknown)
91. JF02-'Bumblebee' x *boliviensis*
92. JF02-cane like, mixed
93. JF02-canes, mixed tall hybrids
94. JF02-'Caravan' selfed
95. JF02-'Cleopatra'
96. JF02-*cucullata* Willdenow var *arenosicola* C. de Candolle [uncertain id.]
97. JF02-*fimbriata*-mixed
98. JF02-*hirtella* open pollinated
99. JF02-'Immense'
100. JF02-'Jumbo Jet' open pollinated
101. JF02-'Kentwood'
102. JF02-'Leslie Lynn'
103. JF02-*malabarica* open pollinated
104. JF02-'Palomar Fanfare' selfed
105. JF02-*pearcei* open pollinated
106. JF02-*rex* cultivar
107. JF02-semp- Pink
108. JF02-semp-Glamour Rose Picottee
109. JF02-semp-mixed frillies hybrid
110. JF02-*sericoneura* open pollinated
111. JF02-*solananthera* open pollinated
112. JF02-tuberous- non-stop mixed
113. JF02-tuberous species, mixed
114. JF02-tuberous-red upright
115. JF02-tuberous-yellow basket
116. JF02-tuberous-orange/white
117. JF02-tuberous-rose red
118. JF02-tuberous-pink/white
119. JF02-mixed seeds

---

## Houston

If you are making your airline reservations early for the *Begonias International Convention* in Houston, be sure to book your flight into Houston Hobby Airport - this one is close to the hotel and it has an airport shuttle to this airport. The other airport is quite a distance.

# Minutes of the Board Meeting, American Begonia Society, Orange County, CA, September 8, 2001

1. President Jaros opened the meeting and called upon **Gene Salisbury** to read the Aims and Purposes of the Society. 2. There were 34 Board member votes present. 3. Minutes of the prior meeting were approved. ..5. Public Relations director **Andy Conely** has redesigned the dues reminder card to be more eye-catching in a partial color format. **Ann Salisbury** will get an estimate of printing costs...6. **Maxine Zinman** has been approved to continue to arrange a cell phone contract so she can contact delinquent members...7. The final tally for donations for the holiday greetings project was \$2151. .. 8. **Howard Berg** reported that the Grant Review Committee has met to formulate procedure and determine various categories for acceptable grant proposals and is still working memoranda of understanding and other details. The committee has received one grant request and will make a recommendation at a future date. ..11. The ABS Website is a regular and ongoing project. **Morris Mueller** explained that the title page of the website does not reflect the updates because it is dated and difficult and time-consuming to change. Those who visit should proceed beyond the title page to find current information. 12. An executive board meeting was called to discuss the financial crisis concerning the 2001 ABS Convention which is unfortunately in the red. The Board voted to accept the following three proposals concerning convention debts: 1. Debts incurred by

members **Judy Gurka** and **Paula Szilard** will be paid after receipts are received by ABS treasurer **Carol Notaras**. 2. The balance of further outstanding debts or credits will not be paid until the Audit Committee has cleared the financial statement from the convention. 3. Any further bills concerning the 2001 ABS Convention will be brought before the executive board for approval before payment is made by the ABS treasurer. Donations were invited to help support the convention. Checks should be made out to the ABS with a notation that it be applied to the Denver Convention. Such donations are tax deductible. 13. The proposal for a convention advisory committee was discussed. It was recognized that committee members must have expertise in all aspects of convention planning, for example, hotel contracts, registration, plant sales and show arrangements, etc. **Mary Sakamoto** volunteered to chair the committee and the board approved her appointment. She will assemble a cadre of appropriate experts for approval by the Board. 14. A proposal to include a copy of the ABS Constitution and Bylaws in the packet sent to new members was approved. 15. **Ann Salisbury** volunteered to send an updated copy of the ABS Constitution and Bylaws to all branches. 16. The availability of a complete set of 35 years of Begonians was announced by **Ann Salisbury**. She recently purchased these from someone no longer needing them and will sell them intact [contact her for more information]. 17. The **Thompsons'** book on begonias is out of print permanently. Those wanting one should seek secondhand sources such as E-bay.

Respectfully submitted,

**Richard Macnair**, Secretary

## Minutes of the Annual Business



The Association for plant & flower people who grow in hobby greenhouses, windows, and under lights!

Quarterly Magazine and Newsletter \* Growing & Maintenance Help & Advice  
Dues: USA \$22/yr. Canada/Mexico \$24/yr. , Overseas \$25/yr. (US. funds/bank, MO)  
Sample magazine \$3.50, *Directory of Manufacturers & Distributors* \$2.50

**Hobby Greenhouse Association**  
8 Glen Terrace, Bedford, MA 01730-2048  
<http://www.hobbygreenhouse.org>



## Meeting, American Begonia Society, Orange County, CA, September 8, 2001.

1. **President Jaros** opened the meeting and asked **Jeanne Jones** to read the Aims and Purposes of the Society. 2. The minutes of the 2000 Annual Business Meeting were approved at a prior meeting. 3. Treasurer **Carol Notaras** presented the financial statement for the period August 1, 2000 to July 31, 2001. General fund income was \$55,004.86 and disbursements were \$51,848.04. The combined checking accounts had an initial balance of \$7100.86 and ending balance of \$11,897.69. Savings account totals were \$71,010.05 initial and \$66,142.09 final. The final total was lower because \$3900 was withdrawn this year. Combined checking and savings account totals were \$78,110.91 beginning and \$78,039.78 ending. Thus, the finances were stable for the period. ...The report was accepted. 4. A moment of silence was observed for three lost members: **Kay Bradley**, **Mae Blanton**, and **Sylvia Leatherman**. 5. Membership Director **Arlene Ingles** presented the membership data for January to August 2001. Institution memberships went from 94 in January to 91 in August. Lifetime members started with 56 and ended at 59. Domestic members went from 1057 to 965. Second family members went from 56 to 55, and foreign members from 96 to 101. Total membership went from 1369 to 1271 for this period. New member sources were internet 7, branches 12, convention 1, flower show 1, former rejoined 18 and unknown 9. 6. Begonian Editor **Freda Holley** apologized for the printing problems with the last issue. She is considering a change of printer. 7. **Freda Holley** reported that the publications committee reviewed and approved publication of the Buxton Checklist Update this year prepared by Wally Wagner. **Scott Hoover's** slides from his Indonesian trips will be published on the Astro Branch website. The board approved up to \$100 could be spent to convert the slides to prints for entry on the website. The Millie Thompson Publication Fund now exceeds \$4000 and publications were sought but none received. 8. **Ann**

**Salisbury** submitted a report showing back issues sales of \$380.60, Millie Thompson Publications Fund sales of \$144.50. Donations for seed from **Scott Hoover's** 2000 collection trips were \$249.00 and advertising sales were \$1537.50. 9. **Michael Ludwig** reported on activities of the Awards Committee. 10. Ballot Counting Chair reported 68 ballots were received in the officer election. 14. 2002 Convention Chair **Cheryl Lenert** reported that the theme of the Houston Convention is "Begonias International." Rates at the Hobby Hilton will be very reasonable. 15. Historian **Norma Pfrunder** has received several years of secretary's reports from the no longer existing Hilltop Branch of CA. 16. Co-director of Nomenclature reported mailing registrations forms to **Virginia Jens**, **Ross Bolwell**, and **Mike Ludwig**... 18. Research Director **Bruce Boardman** reported no current research projects. 19. **Michael Ludwig** reported on the seed fund. The Margaret Lee Branch won the seed challenge by **Daniel Haseltine** by donating half the lots received with others coming equally from foreign and American members. ...22. The Astro Branch needs rhizomatous cuttings now to grow on for the 2002 Convention. Please send the cuttings to **Bill Claybaugh**, 1702 Country Club Dr., Crosby, TX 77532. 23. The Bylaw change to add the Grant Review Committee as another standing committee was approved. 24. **Herb Wilkinson** installed the new officers. 25. **President Jaros** was thanked for his services during his two one-year terms. He got a standing ovation and he thanked everyone for their support. 26. **President Mueller** then presented former **President Jaros** with a plaque in appreciation of his service as president and a life membership in ABS.

Respectfully submitted,  
**Richard Macnair**, Secretary

*These minutes have been severely edited and condensed for reasons of space. Complete minutes are available from Richard Macnair at 177 Hancock Street, Cambridge, MA 02139. Please include a stamped, self-addressed envelope when requesting these.*

# New Cultivars

## Official International Registration 983

### Gene Salisbury, Nomenclature Director

Applications to register Begonia cultivars may be obtained from Gene Salisbury, P.O. Box 452, Tonkawa, OK 74653. Forms must be typed or printed in ink and accompanied by a \$2 check payable to the American Begonia Society. Clear photos for publication in the *Begonian*, drawings and dried specimens are requested. ABS is the International Registration Authority for *Begonia* cultivar names. In the listing of cultivar parents below, the female (seed) parent is given first.

#### **Begonia 'Flamingo Queen'**

**No. 983 *Begonia* (U078 [*B. maculata*] x *B.* 'Lenore Olivier') 'Flamingo Queen'**

This Cane-like hybrid, grouped with 'All Others', is medium growing to 1.5 m. (5 ft.). It has dark green (RHS 139A) leaves with silver spots of varying sizes and a variable silver edge and a silver drip tip; red veins on the reverse; obtrullate; 31 cm. long by 9 cm. wide (12 1/2" x 3 2/3"). Margin is entire, slightly angular. Surface is smooth, glabrous with 4 main veins. Petioles are 10 cm. (4") with mid-green color and absent hairs. Stipules are

5 cm. (2") in length, 2.2 cm. (1") in width, pale green in color, translucent and absent hairs. Flowers are salmon pink (RHS 39 B-3). Male flowers and female flowers are 4 cm. Males have 4 tepals, and female 2. There are many flower clusters containing up to 250 flowers. Peduncle is 6 cm. Bloom is from late spring through autumn. This is a free branching begonia with elegant large unequally spotted leaves held vertically, forming a shapely plant. Clusters of salmon-pink flowers through warm months are lightly fragrant, displayed prominently out from the foliage. Plant makes a bold statement and is easily recognized from other cultivars by





its flower color and leaf shape and size.

This plant was developed by **Ross Bolwell** in 1990. It first bloomed in 1991 and was first distributed in 1992. It has been previously published in *Begonias*, the Journal of the Japanese Begonia Society,

issue no. 186, 1999. It has been tested and recommended by **Elizabeth Bogdanovic**, P.O. Box 4251, Forest Lake, 4078 Queensland, Australia. Registered November 13, 2001.

### Identify this Species

The mystery species described on page 188 of the September/October issue is *B. kenworthyae* Ziesenhenné, shown to the right, named and described in 1950. As noted before it is from Mexico and is the parent of *B.* 'Colonel Gale' which was exhibited at the Denver convention. This one has not been an easy grower for me and it is not often seen today. The photo, taken at the Fort Worth Botanic Garden, is by Mary Bucholtz.



### Cloudy Valley Nursery

935 W. Isabella St.  
Lebanon, OR 97355  
(541) 258-7517  
goetzk@begonias.com



*B. rex Putzeys*

- \* Begonias \* Gesneriads
- \* Hoyas \* Tropical Plants
- \* Terrarium Plants
- \* Nepenthes (Pitcher Plants)
- \* Selaginellas (tropical & hardy)
- \* Begonia & House Plant Books
- \* Propagating & Growing Supplies



*B. limmingheana*

Visit our web page and virtual greenhouse at [www.begonias.com](http://www.begonias.com)

*Antonelli Brothers*  
BEGONIA GARDENS  
2545 Capitola Rd.  
Santa Cruz, CA 95062  
Phone (831)475-5222  
Fax (831)4757066  
**WORLD FAMOUS**  
Antonelli Hybrid Choice Select  
Tubers, Seeds, Plants  
CATALOGS : Tubers, Jan-April  
Spring Catalog: Fibrous/Fuchsias  
On Request  
URL: <http://www.infopoint.com/sc/market/antnelli>



# NEWS: ABS, Branch, International

Begonias are getting a little national publicity at last. *Southern Living* featured Rex begonias in their November 2001 issue. Rekha Morris wrote an outstanding article for the December issue of *Carolina Gardener* (and this is quite a beautiful publication) titled "The Begonias," an overview of the familiar as well as unusual selections of begonias. She even got in a mention of ABS. An upcoming issue of *Garden Gate* magazine, January/February I think, will feature an article on tuberous begonias. All have knock-your-eyes-out color photographs.

Paul Tsamtsis' beautifully designed, color newsletter for the Sacramento Branch, *The Begonia Leaf*, in its September edition reported that about 1600 plants were sold during "A Century of Begonias," their annual show and sale, with just 16 unsold plants at closing! The newsletter also featured an article on "*Begonia peltata* Otto & Dietrich" by Morris Mueller and on "Begonia Seed from Pollination through Propagation" by Connie Le Louis. In October, it was "*Begonia* 'Torsa' [child of *B. grandis* ssp. *evansiana*]" by Paul Tsamtsis. Outstanding all!

In fact, our newsletters just keep getting better and better. *The Peninsula Begonian*, newsletter of the Palos Verdes Branch, fea-

tured an article in November "What is a Superba?" and in October "What is a Mallet?," both by Brad Thompson. The November *Buxtonian*, newsletter of the Buxton Branch, featured Normand Dufresne's article '*B. crasscaulis*'. The great thing is that these articles were then picked up and used in other newsletters around the country. The articles also demonstrate that no matter how much we know about a begonia or begonias in general, our own members can always teach us more!

Scott Hoover and Harry Wiriadinata presented papers on "*Begonia* of Southeast Asia" at the Flora Malesiana Conference in Sydney, Australia last September. Carrie Karegeannes co-authored with Scott Hoover on his paper. There will be a new expedition in February of 2001 despite the clouds of terrorism. Contributions to the new expedition may be made by sending checks **made out to ABS** to Carol Notaras, 2567 Green St., San Francisco, CA 94123 marked "For Indonesian Expedition." Seeds will be distributed to all supporters in accordance with the process established by the ABS Board. Of course, seed from the 2001 expedition were featured in the last issue of the *Begonian*.

## THE NORTH AMERICAN LILY SOCIETY, INC.

A Society to Promote the Culture of Lilies



We would like to invite you to add the Genus *Lilium* to your garden--the true Lilies. Join us by sending annual dues of \$20 for 1 year or \$55 for 3 years.

Send to: Dr. Robert Gilman, NALS Executive Secretary  
P.O. Box 72, Owatonna, MN 55060  
For further information: [www.lilies.org](http://www.lilies.org)



## **A Work in Progress**

**by Louise Korobkin**

Like all gardens, mine is a work in progress.

I've always enjoyed Rex begonias so about three years ago I changed my shade area into Rexes, tuberous and ferns. Begonias are planted directly in the ground. Sprinklers go on every other day for five minutes. I have not lost any plants even during the winter. As you can see

from the photo this Rex is large and one of the first I planted. It's been in the ground for three years and doesn't drop leaves during the winter. I do live near the beach and enjoy a coastal climate. So don't be afraid of planting in the ground. These begonias are tougher than we think.

*Louise's garden was one of those the editor visited when she was in CA. As lovely as these photos are, they don't do Louise's garden justice. You may write her at 23126 Kent Ave., Torrance, CA 90505.*





# In Memory

## Sylvia Leatherman

Sylvia Belle Leatherman, 90, of Yuba City, CA died August 21, 2001. She was preceded in death by her husband, Buck Leatherman, who was well-known to ABS members. She was born in Los Angeles and at one time she was the operator of a specialized nursery in El Monte, growing a wide variety of begonias and ferns. She coauthored a book on how to grow ferns. She was a member of California Nurserymen, American Fern Society, American Begonia Society, National Fuchsia Society, and Living Plant Growers Association.

ABS will always remember Sylvia through her namesake, the tall, graceful *B. leathermaniae* whose juvenile leaves are among the most beautiful in the genus. It was named for Sylvia by Thelma O'Reilly and Carrie Karegeannes. This begonia originates in Brazil, a country whose plants always fascinated her. She even visited and returned with begonias and begonia seed. Sylvia was also a writer of several articles for the *Begonian*.

## Mae Blanton

February 21, 1914 - August 10, 2001

ABS Round Robin Director, Horticultural Correspondent, and the "mother" of Southwest Region, ABS: Mae Blanton was a member and an active supporter of the American Begonia Society for nearly fifty years. ABS responded by awarding her the "triple crown," the Eva Kenworthy Gray and Herbert P. Dyckman awards and the Alfred D. Robinson Medal.

Those who never met her probably remember Mae as the hybridizer who created Begonia 'Flo-Belle Mosely', 'Essie Hunt', 'Picobeth', and 'Glennis Crouch' (which received the Alfred D. Robinson Medal in 1990), as well as a dozen others. Mae created her hybrids with much consideration, named and released only a few for study, registered only two over a long career. Her ability with seed

was legendary; once she got good germination from seed that had been refrigerated for over 25 years.

Those of us who were lucky enough to have known her will remember her smile, her wisdom, and her love - not just of begonias and other growing things, but of all of creation. Her enthusiasm, patience, kindness, and above all her sharing will be greatly missed. Mae shared even in death, leaving her remaining plants, her begonia library, and her awards to the begonia collection at the Fort Worth Botanic Garden.

**Tamsin Boardman**

## Lillian Washburn

Lillian Washburn, 93, a charter member of Florida West Coast Begonia Society, died on 11 October, 2001. A native of East Brookfield, Massachusetts, Lillian came to St. Petersburg in 1961 and, instantly, became active in virtually every local plant group. She was one of those people who never met a plant she didn't like, but admitted she was especially partial to begonias and bromeliads.

During the prime of her gardening years, she grew lush begonias with seemingly little effort and shared with anyone who showed even mild interest. She also recruited many members of both the begonia and bromeliad societies; and, though a person of modest means, generously offered financial assistance to both groups during their frequent times of monetary need. She alone or in tandem with a few others made several holiday parties possible for the groups.

Most plant societies are desperately in need of more members such as Lillian.

**H. Alton Lee**

---

**Winter Board Meeting  
in West Palm Beach  
February 21-24, 2002  
All are Invited!**

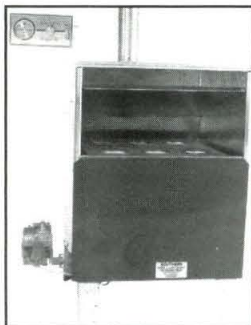
**Details, Page 229 of the  
November/December *Begonian***



## Southern Burner Co.

Vented Greenhouse Heaters.

Specialists  
in the heating  
needs of the  
hobby grower  
since 1923.



Model A-1 25,000 BTU  
Vented Orchid House Heater

Dependable vented orchid house heaters.  
Economical heat on natural  
or LP gas.

"No Electricity Required."

Millivolt controls available with "Setback"  
thermostat for day & night temperatures.

For literature and prices, give us a call or drop us a line.

### Southern Burner Co.

P.O. Box 885 Chickasha, OK 73023  
(800) 375-5001 · (405) 224-5000

## Weiss' Gesneriads

Plants Grown for Distinctive Foliage

**Episcias**

**Sinningias**

**Begonias**

**Chiritas**

**Plants - Cuttings**

**Free Catalogue**

(216) 321-6785

2293 S. Taylor Road  
Cleveland Heights, Ohio 44118



Your begonias will feel right at home growing with gesneriads!

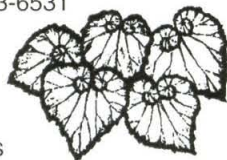
### American Gloxinia and Gesneriad Society

Annual dues: Individual....\$20, Outside US:  
25. Quarterly Journal, extensive seed fund,  
slide & video library judging schools, annual  
convention

*Begonias - Gesneriads*  
*Rare Flowering Plants & Vines*

## Kartuz Greenhouses

1408 Sunset Dr., Dept. B  
Vista, CA 92083-6531  
760-941-3613



Catalog:  
\$2.00, Free to  
ABS Members

<http://www.kartuz.com>

**Shop our Advertisers!**  
**...and let them**  
**know who sent you!**

## Rob's Mini-o-lets

Specialists in African Violets & Gesneriads  
7-time winner, Best New Cultivar, 6-time Best  
Commercial Display, National AVSA Shows

**We grow Begonias too!**

We offer a good selection of small-growing  
& mini-varieties at \$3.50 each, your choice.

**10 different plants, our choice \$30**  
**Add \$7 per order for shipping**

We ship anywhere (internationally), anytime  
(ask us about winter delivery).

Safe delivery guaranteed.

For full-color catalog, send \$1

P.O. Box 696, Naples, New York 14512  
[www.robsviolet.com](http://www.robsviolet.com)  
ph. 716-374-8592

# COMING EVENTS

**February 12, 2002:** Dr. Mark Tebbitt of the Brooklyn Botanical Garden will be the speaker at the Tuesday meeting of the **Knickerbocker Branch**. He is writing a book on the evolution of begonias and will discuss this as well as begonia DNA.

**February 21-24, 2002: Winter Board Meeting,** West Palm Beach, Florida. The Raddison Hotel, West Palm Beach, FL, Ph: 261-689-6888 direct, 1-800-333-3333 national. For details, contact Virginia Jens at 561-329-5012. [Please note that Page 229 of last issue should say February 21-24, 2002!!]

**April 20-21, 2002: Fred A. Barkley Branch** Show and Sale at the Will Rogers Garden Center, Oklahoma City, OK. For more info, contact RL Holley at 405-385-0484 or email at fholley@provalue.net.

**May 29-June 2, 2002: Begonias International:** ABS Convention/SWR Get-Together, Houston at the Hobby Hilton on Airport Road (near Hobby and there is a shuttle).

**September 27-29, 2002: AABS Convention,** Perth, Australia. Western Australia is famous for its unique wildflowers and it will be spring there giving visitors the opportunity to see the fantastic array. The venue is the Metro Inn Apartments, Nile Street, East Perth, Australia. For details contact the Western Australia Begonia Society, P.O. Box 427, Cloverdale W. Australia 6985, Telephone (08) 9361 4564 or E-mail lancas@iinet.net.au You're invited.

---

## *The Begonian*

**Editor: Freda M. Holley,** 2015 Elvin Dr.  
Stillwater, OK 74074. Ph: 405-385-0484.  
E-mail: fholley@provalue.net

**Consulting Editors: Tamsin Boardman**  
and **Jan Brown.**

**Nomenclature Editor: Jack Golding,**  
33 Ingram Drive, Monroe Township, NJ  
08831-4641, E-mail: JGBEGNOM@aol.com

**Quick Tips: Dianna Wilkerson,** 15356  
Pheasant Run, Choctaw, OK 73020, E-mail:  
begoniafiend@aol.com

**Advertising Staff:**

**Display Ads: Ann Salisbury,** P.O. Box  
452, Tonkawa, OK 74653, Ph: 580-628-  
5230. Email: geneann@kskc.net

**Plant Society Ads: Wanda Macnair,**  
177 Hancock St., Cambridge, MA, 02139,  
Ph: 617-876-1356

**Send inquiries about address changes,**  
**missing copies, dues, subscription and**  
**circulation to Arlene Ingles, 157 Monu-**  
**ment, Rio Dell, CA 95562-1617,**  
**Ph: (707) 764-5407;**  
**E-mail ingles@humboldt1.com**

## ABS Elected Officers

**President**.....Morris Mueller, 163 Hartnell Place, Sacramento, CA 95825; Ph: 916-927-4921

**Past President**.....Charles Jaros, 200 Maureen Drive, Sanford, FL 32771; Ph: 407-328-0618

**1st Vice-President**.....Howard Berg, 16 Highview Terr., New Canaan, CT 06840.

**2nd Vice-President**...Janet Brown, 7825 Kentwood Ave., Los Angeles, CA 90045-1150; Ph: 310-670-4471

**Secretary**.....Richard Macnair, 59 Walker St., Cambridge, MA 02138; Ph: 617-876-1356

**Treasurer**.....Carol Notaras, 2567 Green St., San Francisco, CA 94123; Ph: 415-931-4912; E-mail: cnotaras@juno.com

## Appointed Chairmen and Directors

**Audit**.....Paul Tsamtsis, 1630 F St., Sacramento, CA 95814-1611

**Awards**.....Michael Ludwig, 6040 Upland St., San Diego, CA 92114-1933

**Back Issues**.....Ann Salisbury, P.O. Box 452, Tonkawa, OK 74653; Ph: 580-628-5230, Email: geneann@cablone.net

**Ballot Counting**.....Ingeborg Foo, 1050 Melrose Way, Vista, CA 92083; Ph: 760-724-4871

**Book Store**.....Cheryl Lenert, 13014 Chavile, Cypress, TX 77429, Ph: 281-897-0155

**Branch Relations**.....Mary Bucholtz, 1560 Lancaster Terrace #1008 Jacksonville, FL 32204; Ph: 904-353-9111

**Business Manager**.....Gene Salisbury, P.O. Box 452, Tonkawa, OK 74653; Ph: 580-628-5230, Email: geneann@cablone.net

**Conservation**.....Tamsin Boardman, P.O. Box 69, Bluf Dale, TX 76433; Ph: 254-728-3485

**Convention Advisor Committee** ...Mary Sakamoto, 6847 E. Sycamore Glen, Orange, CA 92869, Ph: 714-633-6997, E-mail: m.sakamoto@worldnet.att.net

**Convention Chairman**...Cheryl Lenert, 13107 Chavile Dr., Cypress, TX 77429, Ph: 281-897-0155

**Entries/Classification**....Leora Fuentes, 2200 Glen Forest Ln., Plano, TX 75023; Ph: 972-964-6417

**Grants Committee**...Howard Berg, 16 Highview Terrace., New Canaan, CT 06840

**Internet Editor**...Kathy Goetz, 935 W. Isabella Street, Lebanon, Oregon 97355; Ph: 541-258-7517. E-Mail: goetzk@begonias.com

**Historian** ....Norma Pfrunder, 1958 Sycamore Ct., McKinleyville, CA 95519-3900

**Horticultural Correspondent**...Gregory Sytch, 6329 Alaska Avenue, New Port Richey, FL 34653-4301; Ph: 727-841-9618 E-mail: GSytch@cs.com

**Judging**...Maxine Zinman, 2770 Kimble Rd., Berryville, VA 22611; Ph: 540-955-4555, E-mail: begonia@visuallink.com

**Members-at-Large**... Jerry Baird , 5757 Cartier Road, West Palm Beach, 33417-4307, E-mil: JBaird1497@aol.com

**Membership**...Arlene Ingles, 157 Monument, Rio Dell, CA 95562-1617; Ph: 707-764-5407, Email: ingles@humboldt1.com

**Nomenclature**.....Gene Salisbury, P.O. Box 452 Tonkawa, OK 74653; Ph: 580-628-5230 Email: geneann@cablone.net

**Parliamentarian**....Margaret Lee, 1852 31st St., San Diego CA 92102

**Public Relations**.....Andrew Conely, 45000 County Road 78.9, Model, Colorado 81059 Ph: 303-916-5676

**Research**.....Bruce Boardman, P.O. Box 69, Bluff Dale, TX 76433; Ph: 154-728-3485

**Round Robin**.....Virginia Hamann 1169 Lincoln Ave., Chester IA 52134-8508; Ph: 319-565-4208

**Seed Fund**.....Michael Ludwig, 5040 Upland St., San Diego, CA 92114-1933, Ph: 619-262-7535, E-mail:

begoniagrowing@home.com

**Slide Library**.....Charles Jaros 200 Maureen Dr., Sanford, FL 32771; Ph: 407-328-0618.

Visit Today!

[www.begonias.org](http://www.begonias.org)





**American Begonia Society**  
157 Monument  
Rio Dell, CA 95562-1617

*Change Service Requested*

Non Profit Org. U.S. Postage <b>Paid</b> Permit No. 176 Tonkawa, OK
---



**Happy New Year!**