

The BEGONIAN



JUNE, 1970

Devoted to the Sheltered Garden

VOL. 37, NO. 6



B. Rex 'Helen Teupel'
Photo by Gene Daniels, Black Star

GENERAL OFFICES

GENERAL OFFICES, dues, address changes, or magazines: Pearl Benell, Membership Secretary, 10331 South Colima Road, Whittier, California 90604

Subscription: \$4.00 per year. Foreign (Mexico and Canada) \$4.50. U.S. (Mexico and Canada) 1st Class \$5.50. Foreign 1st Class \$6.50 U.S. Air Mail \$6.50. Pay in U.S. currency only.

Entered as Second-class Matter at Whittier, California, under the act of March 3, 1879.

ELECTED OFFICERS

President Mrs. Vera Naumann
346 N. Leland Ave., W. Covina, Calif. 91790
President Elect Mrs. Pearl Benell
10331 S. Colima Rd., Whittier, Calif. 90604
Past President Walter Pease
8101 Vicksburg Ave., L.A., Calif. 90045
Secretary Mrs. Irene Grannell
1431 Coronado Terr., L.A., Calif. 90026
Treasurer Walter J. Barnett
1213 S. Mullender Ave., W. Covina, Calif. 91790
Vice Pres. 1 year . . Mrs. Frederick Kingsbury
225 Lee St., Brookline St., Mass. 02146
Vice Pres. 2 years James Somes
4849 W. 130th St., Hawthorne, Calif. 90250
Vice Pres. 3 years. John Provine
2415 Queensbury Rd., Pasadena, Ca. 91104

BEGONIAN STAFF

Editor Mrs. Mabel Anderson
16609 Cypress St., Covina, Calif. 91722
Co-Editor Mrs. Iris Delameter
1212 W. Eckerman Ave, W. Covina, Ca. 91790
Contributing Editors . .
Mrs. Elda Haring, Mrs. Hertha Benjamin
Mrs. Phyllis Wright, Mrs. Don Wagner
Advertising Manager . . . Mrs. Anne L. Rose
14036 E. Ramona Dr., Whittier, Calif. 90605

APPOINTED OFFICERS

Awards Chairman Mrs. Hazel Snodgrass
265 N. Walnut Dr., Ventura, Calif. 93003
Business Manager Mrs. Virginia Barnett
1213 S. Mullender Ave, W. Covina, Ca. 91790
Historian Mrs. Edna Burkett
3341 Hedwig Rd., Los Alamitos, Ca. 90720
Judging Course Dir. Mrs. Ruth Pease
8101 Vicksburg Ave., L.A., Calif. 90045
Librarian Mrs. Lydia Austin
15329 Eastwood Ave., Lawndale, Ca. 90260

APPOINTED OFFICERS (Continued)

Membership Sec. Mrs. Pearl Benell
10331 S. Colima Rd., Whittier, Calif. 90604
Nomenclature Dir. . . . Rudolph Ziesennehenne
1130 N. Milpas, Santa Barbara, Calif. 93103
Parliamentarian Mrs. Margaret Taylor
111 Evelyn Ave., Anaheim, Calif. 92805
Photographer Gene Daniels
Box 83, Camarillo, Calif. 93010
Research Dir. M. Carleton L'Hommedieu
370 Locust Ave, Oakdale, L. Island, N.Y. 11769
Round Robin Dir. Mrs. Anita Sickmon
Rt. 2, Box 99, Cheney, Kansas 67025
Seed Fund Admin. Mrs. Florence Gee
234 Birch St., Roseville, Calif. 95678
Show Chairman Everett Wright
4508 W. 133rd St., Hawthorn, Calif. 90250
Slide Librarian Mrs. Irene Grannell
1431 Coronado Terr., L.A., Calif. 90026
Public Relations Dir. . . . Mrs. Martha Rader
10934 E. Flory, Whittier, Calif. 90604
Northwestern P. R. Chairman. . Mrs. E. Fariss
17721 Bothell Way, N.E., Seattle, Wash. 98155
Southern P. R. Chairman. . . Mrs. M. Sikkelee
3603 La Joya Dr., Dallas, Texas 75220
Northern Calif. P. R. Chairman. Mrs. J.H. Smith
2479 29th St., San Francisco, Ca. 94116
Northeastern P. R. Chairman. . . F. Kingsbury
225 Lee St., Brookline, Mass. 02146
Northeastern Co-Chairman . . Mrs. V. Withee
Hill Farm Rd., Coventry Cntr., R. 1. 02817
Eastern P. R. Chairman . . . Miss Lily C. Fine
1240 Carrol St., Brooklyn, N.Y. 11225
New Zealand P. R. Chairman . Don Stephenson
56 Mortimer Terr., Wellington, C2, N.Z.

Views expressed in this magazine are not necessarily those of the Editors, the Society or its officers.

HARRY M. BUTTERFIELD IN MEMORIAM

Harry M. Butterfield passed away April 5, 1970 at the age of eighty-two. He was friend and mentor of the American Begonia Society. His most notable works in connection with *Begonias* is a 16 page bulletin titled "Hints on Growing Begonias" published in 1941 and a later booklet, "Growing Begonias in California" published in 1950; both published through the California Agricultural Extension Service, College of Agriculture, University of California at Berkeley. Both publications are available on loan through the A.B.S. Library.

Mr. Butterfield is also noted for founding a system of registering *Begonias* which has become recognized as the official registration authority around the world. He was Nomenclature Director of the A.B.S. for many years and contributed a great many articles for "The Begonian". He wrote more than 100 manuals, circulars, bulletins and leaflets for the Division of Agricultural Sciences as part of his work in the University Agricultural Extension division. Six editions of his "Home Floriculture in California",

numbering over 250,000 copies were published.

Mr. Butterfield was born in Nebraska and was brought to California when he was less than a year old. He entered U.C. Berkeley in 1910. After graduation in 1914 he taught in UC's Department of Agriculture Education. He was on the staff of the Public Service Office of the U.C. Agricultural Extension division for many years.

Mr. Butterfield once said his chief motivation was an insatiable curiosity. "Every time I come to an interesting fact I have to dig back into its origins" he said. "It has led me some exciting chases, into past history and forward into conjecture and experiment".

In the field of succulents he was a leader in the breeding of the genus of *Echeveria*.

He is survived by two daughters, a son, two brothers, four sisters, eight grandchildren and four great grandchildren. The American Begonia Society joins his family in mourning the passing of one of the great horticulturist and floriculturist of our time.

AIMS AND PURPOSES OF THE AMERICAN BEGONIA SOCIETY, INC.

The purpose of this Society shall be:

TO Stimulate and Promote interest in *Begonias* and other shade-loving plants;
TO Encourage the introduction and development of new types of these plants;
TO Standardize the nomenclature of *Begonias* and companion plants;

TO Gather and Publish information in regard to kinds, propagation and culture of *Begonias* and companion plants;
TO issue a bulletin which will be mailed to all members of the Society; and to bring into Friendly contact all who love and grow *Begonias*.

FROM THE PRESIDENT

Some time ago it was recommended by the President and requested of the Branch Directors that The Aims and Purposes of the American Begonia Society be read at each Branch meeting; or at least, read at every other meeting in the year.

The Theodosia Burr Shepherd Branch of the Society is presenting the Convention and Show for 1970. This is an opportunity to greet old friends, meet new friends and "to bring into Friendly contact all who love and grow *Begonias*".

Let us show our appreciation of the long and hard work of each and every member of the Host Branch by attending and by exhibiting our "best" *Begonias* so that they can be seen and enjoyed by everyone.

Vera Naumann,
President

THE RESEARCH FUND

The A.B.S. Board of Directors has approved the establishing of a Research Fund for the purpose of aiding and encouraging research in the *Begoniaceae*. In the past several years, as Research Director, I have found very little research work being done in this country in the field of *Begonias*; but I have had requests for financial support for such work.


The Board has empowered and authorized the Research Director to solicit funds for research purposes from the Branches and individuals and to deposit such funds in a Research Fund account and to make a monthly financial report to the Board of Directors.

This should be a long term project with a fund established and continuously available for aiding a student that may be doing research in *Begonia* or for whatever the needs may be in research. The activities and results of any research that may be of interest to the members will be reported in "The *Begonian*".

The Research Department will appreciate the cooperation of the Branches and all interested individuals.

Donations may be made out to the A.B.S. Research Fund and sent to the *Research Director*, M. Carleton L'Hommedieu, 370 Locust Ave., Oakdale, Long Island, New York 11769

M. Carleton L'Hommedieu
Research Director



**AMERICAN
BEGONIA SOCIETY**

INSIGNIA PINS \$4.50
EMBLEM STICKERS50
GARDEN SIGNS 1.00

Price includes postage
(California residents, add 5% tax.)

ORDER FROM
MRS. VERA NAUMANN
346 North Leland Avenue
West Covina, California 91790

PATRONIZE OUR ADVERTISERS

Be sure to tell them you saw their Ad in "The *Begonian*"

SHOW—GO—ROUND

Salude Amigos, bring your serapes and sombreros and enjoy the early California setting of the 1970 National Convention and Show.

We hope to have some extra serapes for the Hosts and Hostesses (so they can easily be recognized) but if you feel ambitious take approximately 2 yards of striped material, fold in half, make a slit for your head, bind the edges, sew fringe on the bottom front and back and make a sash to tie around your waist.

The early California theme, "Salude Las Flores" will be depicted in the artistic arrangements, miniature gardens and Branch displays.

The Show Committee will provide the sawdust and redwood chips for the Branch displays. Each Branch will be responsible for the headers to retain the soil. There is an ample supply of smooth beach rocks 2 blocks from the building.

If you are planning to bring your camper or trailer, let us know immediately so that a space can be reserved for you at the Fair Grounds.

Jan Dacayans
4002 Madison Street
Ventura, Calif. 93003

A.B.S. CONVENTION AND SHOW

The annual Convention and Show will be held August 15th and 16th this year at the Ventura County Fair Grounds. Plan to spend your vacation in California and take in the Begonia Show, Convention and Seminars planned for your enjoyment.

RULES FOR PHOTOGRAPHIC ENTRIES

All prints should have the name of the plant or plants on the back followed by the name and complete address of the exhibitor.

Slides should be placed in an envelope (one slide per envelope) with the above information on a separate piece of paper.

A self-addressed stamped envelope must accompany the entry if the picture is to be returned. Pictures which are not returned will be used in the Historian's Book, The Begonian or the slide library.

Judging will be on the quality of the plant, not the photograph.

Photographic entries must be received by July 25, 1970. Send entries to:

Mrs. Irene Grannell
Photo Div., ABS Show
1431 Coronado Terrace
Los Angeles, Calif. 90026

All prints and all slides regardless of size are eligible. Slides in cardboard mounts.

NOTICE

For advance reservations at Hotels or Motels for out of town members planning to attend the Convention and Show August 15th and 16th, write to Mrs. Dorothy Moen at 470 Mac Kay Ave., Ventura, Calif. 93003.

A.B.S. CULTURAL BULLETIN

The completely revised and brought up to date Cultural Bulletin is off the press. The membership Secretary is mailing copies to those on her waiting list. All other members wanting a copy are advised to send 10c and a self addressed stamped envelope, requesting the bulletin to: Pearl Benell, 10331 So. Colima Road, Whittier, Calif. 90604.



B. 'Merry Christmas'

Photo by Walter J. Haring

REX BEGONIA 'MERRY CHRISTMAS'

by Elda Haring, *Greenwich, Connecticut*

One of the most handsome of the colorful Rexes is 'Merry Christmas'. The coloring of the leaf defies description. The rim of the outer edge is deep crimson on a border of green splashed with white and rosy dots. The rosy-red center is edged with silver and finished along the center vein with a splash of maroon.

B. 'Merry Christmas' is considered difficult to grow and with good reason. The plant in the photo is three years old. It has lost all its leaves and stems twice in mid-winter in my greenhouse which is kept at 60 degree night temperature. Fortunately it has always started into new growth in the warmth of late spring when daytime temperatures go to 80 degrees on sunny days. I

have been growing my Rexes on the top of a double-deck bench covered with a canopy of muslin to protect them from cold night air dropping on them from above, and from too strong noonday sun. The greenhouse is heavily shaded in summer. Most of the Rexes I grow do well with this treatment and do not go completely dormant although some of them lose some stems and leaves.

This past summer I brought B. 'Merry Christmas' into the house, repotted it to a mixture of 1/3 milled sphagnum, 1/3 vermiculite and 1/3 perlite and place it under warm white fluorescent lights in my cellar where temperatures often go as low as 60 degrees during very

(CONTINUED)

CLAYTON M. KELLY SEED FUND

Instructions —

“BEGONIAS FROM SEED — SOWING AND GROWING” gives step by step easy-to-follow instructions and encouragement for beginning seed growers. Price 25 cents per copy.

No. 1 — *B. Rex*

Imported from Germany and is a mixture of beautiful, brilliant colors including those from Teupel originations. Price \$1.00 per pkt.

No. 2 — *B. picta*

India. Low; leaves broad-ovate, pointed, green, mottled with lighter and metallic-bronze, upper surface pimples; flowers clear pink. Very ornamental and nice in terrarium. Price \$1.00 per pkt.

cold, winter weather. In this location, under warm white fluorescent lights *B. 'Merry Christmas'* looked beautiful when we left for winter vacation. My “plant sitter” watered it when the top of the mix felt dry but no fertilizer was given for three months. There was no indication at any time that the plant was unhappy with this treatment or in this environment. At the present writing it is a gorgeous compact plant with many more leaves than those shown in the photo. It is responding to a monthly feeding of Rapid-Gro and new leaves are appearing regularly. Soon it will be ready to shift to a 6 inch pot and should become a fine specimen plant in just a few months.

No. 3 — *B. ovatifolia*

India. Small *Begonia* from India having roundish (ovate) leaves about two inches in diameter, peduncles are 4-8 flowered, bearing white or rose flowers, capsules small with persistent style. For those who have requested small *Begonias*. Price \$1.00 per pkt.

No. 4 — *B. roxburghii*

India. Succulent, glabrous ovate leaves, minutely pubescent on the nerves bearing white flowers in short cymes near the axils. The fruit is four celled, four angled, succulent body. Price \$1.00 per pkt.

No. 5 — *B. josephi*

India. A denizen of the misty regions of India and can be easily recognized by its peltate leaves. The plant is variable in size and habit, carrying small rose-red flowers. Price \$1.00 per pkt.

No. 6 — *B. sikkimensis*

India. Thick root-stock and when mature it carries a stem about fifteen inches high. The leaves are round, lobed almost to the base and the lobes themselves are also incised and lobed. Grows on rocks. Price \$1.00 per pkt.

No. 7 — *B. rubro-venia*

Caulescent, elliptic, lanceolate, acuminate leaves, can be easily recognized by its rose-red veins, especially on the underside and by the grayish-white, large irregular patches on the upper side of the green leaves. Flowers are born in

(CONTINUED)

auxiliary peduncles and are white. Price \$1.00 per pkt.

No. 8 — *B. kellermanni*

Guatemala. Deeply cupped green leaves, thick and completely covered with sheer white felt; angel-wing like clusters of white flowers in the late winter, early spring. Easy from seed. Price 50 cents per pkt.

No. 9 — *B. 'Stanfolia'*

No description available — please grow it and send information to Seed Fund. Price 50 cents per pkt.

No. 10 — *B. sunderbruchii*

Old time favorite "star" *Begonia*. Seven to nine fingered leaves are large, bronze-green, strikingly marked with light green veins and splotches, mottled red and green beneath. Each "finger" is pointed and scalloped on edge. Stems ringed with collar of red hairs at joining with leaf. Flowers pink. Price 50 cents per pkt.

No. 11 — *B. bouthainensis*

We are not definite about the spelling of this one and can find no description. Price 50 cents per pkt.

No. 12 — *B. evansiana*

White flowers, to one foot or more tall; stems are erect, bulbils form in leaf axils. Hardy type *Begonia* that will grow out doors in open ground. We are happy to have the white form, seeds have been tested and germination was perfect. Price 50 cents per pkt.

PLEASE NOTE:

We have many seed of *B. caraguatubensis* — Brazil. Although we have offered it several times, not many people have been able to

germinate seed. We are offering one pkt. without charge to any one who is qualified or has the facilities to germinate seed and grow at least one plant. We are very anxious to have this *Begonia* in circulation as it is beautiful and worth while.

For our *semperflorens* growing friends we offer the following *B. s c* — *Derby*, new *semperflorens* about six inches high. Coral flowers with lighter center. Price 50 cents per pkt.

B. s c *Glory of Chatelaine*. Six inches. Very compact and extremely free flowering. Suitable for both sunny and shady locations. Rose-pink. Price 50 cents per pkt.

We have a repeat offer on the following and hope you will take advantage of it —

B. paulensis

Brazil. Although this *Begonia* was discovered in Brazil many years ago, it is not common in cultivation, it was first grown in this country by Louise Schwerdtfeger from seed imported from Germany.

Leaves are medium green, shiny and peltate; distinctly striking with its ivory colored sinus or eye, from which radiate the main veins. The radial veins are joined by cross veins which form a circle, giving an interesting spider-web effect. Each spider-web section is covered with short white hairs, but on the underside of the leaf the hairs are red. Showing up distinctly on an apple-green back ground. The leaf petiole is light green, covered with pinkish hairs and a small collar of red hairs at leaf petiole junction. Flowers are 1¼ to 2 inches in diameter and

(CONTINUED)

are white inside. *B. paulensis* is a magnificent plant to challenge the imagination of collectors of rare and beautiful *Begonias*.

Easily grown from seed, the young plants require protection until they are ready for three inch pots. Over watering is dangerous. Keep seedlings in a humid, sheltered location, moist but not wet, with plenty of light and look forward to plants that will fill a ten inch pot. The beautiful foliage and lovely flowers whose large petals are backed by long maroon hairs, held high above the plant, will be a delight to see. Grows well in any good *Begonia* soil and can be grown in pure sphagnum moss. In any case it is a good feeder and prefers a cool house to a heated greenhouse. Price \$1.00 per pkt.

B. olsoniae syn B. vellozoana Brade

Brazil. Herbaceous, eight to twelve inches tall. Stems short, oblique, up to 3¼ inches long, rooting at the stipules. Leaves oblique, broadly ovate suborbicular, cordate, with a closed basal sinus, palmately eight nerved, four to five inches long, five to eight inches broad, hispid-pilose on both surfaces, with small frimbiate scales on the nerves beneath, green above, with a whitish zone on the veins, paler below and occasionally reddish. Flowers are whitish, sometimes the outer rosy. *B. olsoniae* is considered one of the most beautiful *Begonias* in cultivation and is said to rival *B. masoniana* in beauty. Price \$1.00 per pkt.

B. pearcei

Tuberous species. Fairly widely grown today, which contributed yellow flowers and brown-shaded leaves to early modern hybrids. Price 50 cents per pkt.

OTHER GENERA

Coleus

Rainbow strain— All the brilliant colors, low growing and excellent for combinations in window boxes, pots and bedding in complete or partial shade. We can recommend these to our most critical patrons. Mixed colors. Price 50 cents per pkt.

Mrs. Florence Gee
Seed Fund Administrator
234 Birch Street
Roseville, California 95678

ROUND ROBIN NOTES

Robins are flying everywhere, members are busy with their *Begonias*, interest is very high.

Adventitious growth:

In early March of this year Mrs. Yvonne Wells, Mesquite, Texas was setting a cutting of *B. metallica* in her cutting bed and noticed adventitious growth on it. She called Mrs. Elizabeth Herndon of Dallas, Texas from whom she had obtained the cutting, to tell her of her find. Elizabeth looked and found nine leaves with plantlets growing from a vein (about one half inch from edge) from the underside of the leaf. It was an unusual sight to see these plantlets poking their heads from under the leaf. These growers are wondering how many times this adventitious growth has been found by others and would like to hear from anyone who have had this same experience.

(CONTINUED)

Seed Germination:

Mrs. Dorcas Resleff of Ridgefield, Washington reports she has very good luck with *Begonia* seed and she uses Chuck's directions from December 1968 "The Begonian". She reported good germination on Rex colorvision seed. John Yochum of Princeton, Indiana reports good germination on *B. subvillosa*, *B. palmaris*, *B. 'Carollina'*, *B. 'Kalla King'*, *B. kellermanni*, basket type semps and *B. 'Prince Charming'* x. Grace Shatto of Idaho Springs, Colorado reports: *B. incana* – good germination in 18 days, *B. engleri* – good germination in eight days, *B. josephi* – three seedlings in 23 days, *B. sanguinea* – six seedlings in 23 days, *B. heracleifolia nigricans* – one seedling in 37 days, and *B. nelumbifolia* – four seedlings in 26 days.

Kusler hybrids:

Rosetta White of Newton, Kansas and David Allen of San Francisco agree that they have quicker and better cuttings by fertilizing every time they water after putting them down to root. Hazel Harmon of Ottawa, Kansas reports if she waters a plant too much, she just wads up Kleenex or toilet tissue and keeps putting it under the pot and it just keeps sucking the water out. Hazel finds *B. 'Swirly Top'* a good grower. Seems like a willing grower and she cuts it whenever she feels like it. She enclosed picture of *B. 'Miyo Berger'* and its sport. *B. 'Miyo Berger'* has green veins and the sport is all rose where *B. 'Miyo Berger'* is only rose blobs between veins.

Pollen:

Pat Burdick of Burnsville, Minnesota reports in a seed flight that

when she pollinates *Begonias*, she picks the male blooms and puts them in paper cups to dry. She puts them over a heat register out of the sunshine. In a few days when the petals are dry the pollen is ready to use. She says you can flick the stamens and see the pollen.

Bloom:

Priscilla Beck of Mystic, Connecticut wrote in February that she had a lot of *Begonias* in bloom. Some of the species have pretty flowers, *B. conchaeifolia* has pretty pink flowers, *B. vitifolia* is beginning to send out stalks of flowers. They look like they will be little and lots of them. *B. crispula* is one of those plants with tiny little flowers, sort of greenish, shading to pink in the center.

B. echinosepala:

Members of a species flight are comparing notes and drawings of their plants of *B. echinosepala* and have decided that their plants are not the same.

Lights:

Lois Hutchins of Baltic, Connecticut grows some of her *Begonias* under lights and reports that cool white fluorescent bulbs give her satisfactory results. She has a timer which is set for cycles of six hours on and six hours off and the *Begonias* seem to respond to this treatment. The temperature is between fifty five degrees and sixty five degrees with fairly high humidity.

B. 'Exotica':

Last fall Anita Sickmon, Cheney, Kansas received a piece of a leaf of

(CONTINUED ON PAGE 139)

RULES FOR THE 38th ANNUAL SHOW

1. The Show Chairman shall have complete charge of all exhibits from the opening to the close of the Show.

2. Competition is open to all who wish to enter. However, only ABS members are eligible to compete for the Perpetual and Challenge Trophies.

3. There will be no exhibitor's fee.

4. All competitive entries must be RECEIVED no later than 9:00 a.m., August 15. An entry received after this time will be eligible only for non-competitive exhibition. Entries may be made Friday, August 14, 3:00 p.m. to 11:00 p.m. and Saturday, August 15, 7:00 a.m. to 9:00 a.m.

5. All entries must be checked with the Classification Committee before registration. Competitive entries must be made according to the Show Schedule or be disqualified.

6. There will be two competitive sections in most Divisions. These are Novice Grower and Grower. A Novice Grower is one who is entering this show for the first time. Each exhibitor will compete in his own section except for Best in Show, certain Specific Awards, and Divisions where Novice Grower and Grower sections are combined.

7. An exhibitor may enter more than one plant in any Class provided each plant is of a different variety. However, each entry may compete in only one Class.

8. All entries exhibited in competitive Classes must have been grown by the exhibitor and have been in his possession at least three months prior to the Show. Arrangements and Corsages excepted.

9. Containers and plants must be clean and neat. The Show Chairman shall have the right to exclude, refuse or remove any diseased, infected or unsightly exhibits.

10. All plants should be clearly labeled. Errors will not disqualify, but judges will recognize correctness in close competition. Synonymous names are acceptable.

11. No artificial plant material may be entered in any Class or Division, including the Arrangements and Corsages Division.

12. Exhibitors may not place their plants except under the direction of the Placement Committee. Exhibitors in collection Divisions are responsible for the arrangement of their entries.

13. The Show Chairman shall assume complete charge at the start of judging, and no person will be allowed to interfere with the judges. Only the Show Chairman and personnel authorized by him, will be permitted in the Show during judging.

14. No exhibitor or judge may change the Class of an entry without the consent of the Show Chairman. Additional Classes may be opened by the Show Chairman where warranted.

15. Entry cards must remain sealed until the Show Chairman declares all judging complete.

16. The judges shall make awards according to merit only. If the entry is without merit, the judges shall make no award regardless of the number of entries in the Class.

17. Only entries receiving first place Class awards may be considered for Division Trophies.

18. The judges may use only the Point Scoring System as approved by the ABS.

19. All *Begonia* entries must receive 85 points to be eligible for Division, Perpetual, or Challenge Trophy.

20. The winner of Division I, New *Begonia* Introductions, is eligible for Best *Begonia* in Show but will be re-evaluated according to the Point Scoring Schedule used by the judges in Divisions A-H for the culture of that particular type of *Begonia*. It cannot win any other Division Trophies.

21. A Sweepstakes Trophy will be awarded in each section to the exhibitor with the most blue ribbons in *Begonia* Divisions. Second and third place ribbons will be counted only in case of a tie, on the basis of two points for each second place and one point for each third place.

22. The judges' decision will be final for all awards. If the Show Chairman determines that according to good common judging practices a gross injustice has occurred, it shall be the duty of the Show Chairman to have the questioned exhibit reviewed by a board comprised of all the other judges.

23. The ABS will exercise due caution in safeguarding exhibits but will not be responsible for loss or damage to the property of an exhibitor. Exhibitors are responsible for watering and other care of their entries.

24. No exhibit or award may be removed before the end of the Show without the consent of the Show Chairman. Any violation of this rule may result in forfeiture of any or all awards.

25. All Perpetual Trophies and those Challenge Trophies not retired must be returned to the Show Chairman four weeks prior to the next ABS Show.

26. All Perpetual and Challenge Trophies will remain in the possession of the Show Chairman for engraving immediately after the Show. Trophies will be engraved as soon as practical and made available to the winners.

1970 SHOW SCHEDULE OF THE

SALUDE LAS FLORES

The basic Class is for the potted plant. Additional Classes will be created for the following types of containers:

H – hanging container – any container equipped with hanging wires; hung or not.

W – wall pocket – any container equipped for hanging on a wall.

P – totem pole – moisture retentive single column to which the plant is affixed.

E – enclosed container – terrarium, bubbles or other containers providing an enclosed atmosphere for plant growth.

N – Novel – method of training or growing or natural container. This does include man-made container.

T – trellis – wooden framework to which plants have been trained and grown.

DIVISION A – CANE-LIKE

1. Superba type as *B. sceptrum*, *B. 'Superba Azella'*
2. Mallet type as *B. 'Tingley Mallet'*, *B. 'Arthur Mallet'*, *B. 'Faustine'* (green).

All Other Canes:

3. Low canes (under 2')
4. Medium canes (2' to 4')
5. Tall canes (over 4')
6. Trailing as *B. 'Florence Carrell'*, *B. limmingbeana*

DIVISION B – SHRUB-LIKE

Large Leaved (Bare Leaved):

Class

1. As *B. 'Dorothy Grant'*, *B. 'Braemar'*, *B. caraguatatubensis*
2. Fleshy stemmed as *B. 'Phyllomania'*, *B. 'Paul Bruant'*, *B. 'Gilonii'*

Medium Leaved (Bare Leaved):

3. As *B. 'Thurstoni'*, *B. 'Credneri'*, *B. odorata*
4. Quite fleshy stemmed as *B. umifolia*, *B. parilis*, *B. scabrida*

Small Leaved (Bare Leaved):

5. Acuminata type as *B. 'Catalina'*, *B. 'Richmondensis'*, *B. 'Rutherfordiana'*
6. Other than acuminata type as *B. foliosa*, *B. fuchsiodes*, *B. 'Multiflora Rosea'*, *B. domingensis*

Hairy Leaf:

7. Wide leaved, upright growth as *B. tomentosa*, *B. 'Alto Scharff'*
8. Narrow leaved, upright growth as *B. bradei*, *B. listida*
9. Compact as *B. olsoniae*, *B. acida*

DIVISION C – THICK STEMMED

(NOT JOINTED)

Brittle Stemmed:

Class

1. Large leaved as *B. 'Rudy'*, *B. ludwigii*
2. Small leaved as *B. 'Richard Robinson'*

Woody Stemmed:

3. Thick stemmed as *B. pilifera*, *B. incana*

4. Taller growing as *B. kellermanni*, *B. 'Marie Reed'*, *B. 'Tamo'*

Thicket:

5. As *B. J-11*, *B. friburgensis*

DIVISION D – SEMPERFLORENS CHARACTERISTICS

Species:

Class

1. *Semperflorens* type
2. *Schmidtiana* type

Cultivars:

3. Single-flowered
4. Semi-double and double-flowered
5. Variegated foliage as *B. 'Calla Queen'*, *B. 'Charm'*
6. *Schmidtiana* cultivars

DIVISION E – RHIZOMATOUS

Leaf size will be determined by the greatest dimension of the majority of leaves.

Small leaved (under 3''):

Class

1. Even margin
2. Cut or compound
3. Crested or spiral

Medium Leaved (3'' to 6''):

4. Even margin
5. Cut or compound
6. Crested or spiral

Large Leaved (6'' to 12''):

7. Even margin
8. Moderately cut margin
9. Deeply cut margin or compound
10. Crested or spiral
11. Giant leaved (over 12'')

Rhizome-like Erect Stem:

12. Even margin as *B. manicata*
13. Cut or compound as *B. kenworthyii*, *B. carolineafolia*
14. Crested margin as *B. manicata crispa*, *B. 'Madame Queen'*

Rhizome Jointed at Soil, with Erect Stem:

15. As *B. deliciosa*, *B. tenuifolia*, *B. hemsleyana*

Distinctive Foliage:

16. *B. imperialis* and *imperialis*-like plants as *B. pustulata*, *B. 'Silver Jewell'*, *B. 'Emerald Jewell'*
17. Exotic types (without rex background) as *B. 'Crystal Lake'*, *B. rajah*, *B. griffithii*, *B. goegoensis*, *B. versicolor*, *B. Crispula*
18. Compact hairy as *B. acetosa*, *B. 'Laura Jane'*

DIVISION F – REX CULTORUM

Leaf size will be determined by the greatest dimension of the majority of leaves.

Small Leaved (Under 3''):

Class

1. Spiral
2. Non-spiral

Medium Leaved (3'' to 6''):

3. Spiral

AMERICAN BEGONIA SOCIETY

4. Non-spiral
Large Leaved (over 6"):

5. Spiral
6. Non-spiral

Upright Stemmed:

7. Spiral
8. Non-spiral

DIVISION G — SEMI-TUBEROUS AND TUBEROUS SPECIES

Class

1. Semi-tuberous as *B. dregei*, *B. 'Weltoniensis'*
2. Tuberous species and first generation (F₁) hybrids as *B. cavum*, *B. pearcei*, *B. 'Santa Barbara'*, *B. davisii*, *B. boliviensis*, *B. 'Torsa'*

DIVISION H — TUBEROUS

Class

1. Multiflora
2. Single flowered
 - a. Plain
 - b. Crested or frilled
3. Double
 - a. Roseform
 - (1) Solid color
 - (2) Picotee flowered
 - b. Ruffled flower
 - (1) Solid color
 - (2) Picotee flowered
4. Trailing
5. *B. socotrana* and its hybrids as *hiemalis* types, *cheimantha* types

DIVISION I — NEW BEGONIA INTRODUCTIONS

(Sections combined, See Rule 6)

Entries in this Division are not eligible for any other Division Trophy.

Original stock plants must have been in cultivation at least 36 months.

Eligible plants may not have been shown in competition from June 1, 1970 until this year's National Show.

The hybridizer need not have grown the plants; the grower may enter plants with the hybridizer's permission. Entry must show names of both grower and hybridizer.

A plant not in bloom should be accompanied by a description of the bloom and time of bloom.

A plant is not eligible if it has been released either by sale or gifts; distribution of a few plants for testing does not constitute release.

Class

1. New hybrid introductions
2. Other than hybrids as species, mutation.

DIVISION J — BEGONIAS FROM SEED

(Sections combined, See Rule 6)

Plants must be grown from seed available between 36 and 48 months prior to

this show and which were not the result of the exhibitor's hybridizing.

The listings published in "The Begonian" will be the authority for Clayton M. Kelly Seed Fund seed.

Class

1. Any plant grown from seed available from the Clayton M. Kelly Seed Fund.
2. *Begonia* seed obtained from any other source.

DIVISION K — BEGONIA COLLECTIONS

Entries in this Division are not eligible for any other Division Trophy.

Each Plant from a Different Division:

Class

1. Collection of five *Begonias*
All Plants from the Same Division, but different classes:
2. Collection of five *Begonias*

DIVISION L — SHADE GARDEN DISPLAYS

(Sections combined, See Rule 6)

The size of the floor garden displays is left to the discretion of the exhibitor. Notification of an intended entry in this division must be sent to the Show Chairman by June 15, 1970.

Branch Entry:

Class

1. Floor garden display (predominately tuberous *Begonias*)
2. Floor garden display
3. Educational display

Individual Entry:

4. Individual member or group of member's floor garden or educational display

(Rules for Photographic Entries—see page 129)

DIVISION M — PHOTOGRAPHS OF BEGONIAS

Open to anyone residing outside 100 mile radius of the show.

Class

1. Black and white print
2. Color print
3. Color slide

DIVISION N — PHOTOGRAPHS OF BRANCH GARDEN DISPLAYS AND EDUCATIONAL EXHIBITS

Open to Branches outside a 100 mile radius of the show. Prints 5" x 7" or 8" x 10".

Class

1. Black and white print
2. Color print
3. Color slide

DIVISION O — PLANTERS

(Sections combined, See Rule 6)

A single container with an artistic arrangement of several different rooted plants.

Class

1. Predominately *Begonias*

2. Other shade plants
DIVISION P – MINIATURE GARDENS

(Sections combined, See Rule 6)
Begonias predominating. Not to exceed 30" square.

DIVISION Q – FERNS

- Class
- | | |
|---------------------|-------------------------|
| 1. <i>Adiantums</i> | 4. Ferns over 4' |
| 2. Ferns under 2' | 5. Tree ferns |
| 3. Ferns 2' to 4' | 6. <i>Platynerium</i> s |

DIVISION R – OTHER SHADE PLANTS

- (Sections combined, See Rule 6)
Class
1. African Violets
 - a. Single flowers
 - b. Double flowers
 - c. Miniatures
 2. All other *Gesneriads*
 3. Orchids
 4. Bromeliads
 5. Fuchsias
 6. Vines and trailing shade plants
 7. *Asparagus*
 8. Bonsai
 9. Shade plants not listed above

DIVISION S – COLLECTIONS OF OTHER SHADE PLANTS

(Sections combined, See Rule 6)
Exhibitors are responsible for the arrangement of their entries. Five different labelled plants from a single family.

- Class
1. Collection of African Violets
 2. Collection of other *Gesneriads*
 3. Collection of Orchids
 4. Collection of Bromeliads
 5. Collection of Fuchsias
 6. Collection of Vines and Trailing Shade Plants
 7. Collection of *Asparagus*
 8. Collection of Bonsai
 9. Collection of Ferns

DIVISION T – ARRANGEMENTS AND CORSAGES

(Sections combined, See Rule 6)
Entries should follow the Show Theme, Salute Las Flores, depicting early California Missions or Spanish influence.

Foliage and accessories permitted in all Classes. Artificial plant materials will not be permitted. Material need not have been grown by the exhibitor.

Arrangements:

- Class
1. *Begonia* flowers and foliage (other than *Tuberhybrida*)
 2. Tuberous *Begonia* flowers
 3. *Begonias* and other shade plant material.
 4. Rex *Begonia* foliage predominating
 5. Other shade plant material not listed.
 6. Miniatures not to exceed 5"

Corsages:

7. *Begonia* flowers
8. Other shade plant material

TROPHIES AND AWARDS

Each Class will be judged for First (Blue Ribbon), Second (Red Ribbon), and Third (White Ribbon) on merit only (see Rule 16). All Blue Ribbon winners in a Division will be judged for Division Trophies (see Rule 17). An entry must receive 85 points to qualify for a Division, Perpetual or Challenge Trophy. A Perpetual Trophy is never retired. A Challenge Trophy may be retired to an exhibitor who has won it three times not necessarily consecutive.

A.B.S. Sweepstakes Trophies will be awarded to the winners with the most points in the *Begonia* Divisions.

PERPETUAL TROPHIES

Herbert P. Dyckman Perpetual Award for the Most Distinctive New Fibrous *Begonia*. Given by Mrs. Dyckman in honor of her husband, Founder of the A.B.S.

John Thieben Perpetual Award for the Best New Rhizomatous *Begonia* Introduction. Donated by the Westchester Branch.

Jack Taylor Perpetual Trophy for Best Hanging Container *Begonia*. Donated by the Orange County Branch.

Fred Neels Memorial Perpetual Trophy for Best Wall Pocket *Begonia*. Donated by the Inglewood Branch.

Edna Korts Perpetual Trophy for Best Cane in the Show.

Orris R. Martin Perpetual Memorial Trophy for Best Tuberous in Novice Grower Section.

Redondo Area Perpetual Trophy for Best *semperflorens* in the Show.

Bessie Raymond Buxton Branch Perpetual Award for the Best Collection of five *Begonias*, each from a different Class.

American *Begonia* Society Perpetual Trophy for Best New *Begonia* Introduction.

Theodosia Burr Shepherd Branch Perpetual Trophy for Best *Begonia* in Show by Novice Grower.

San Miguel Branch Perpetual Trophy for Best *Begonia* in Cultivation 25 years or longer.

Helen Bailey Memorial Perpetual Trophy for Best Rex in Show. Donated by the San Diego Branch.

CHALLENGE TROPHIES

Dr. Edgar Irmscher Memorial Challenge Award for Best Entry in Show. Donated by Chuck and Mae Tagg.

President's Challenge Trophy for Best *Begonia* in Show. Presented by Calvin E. Trowbridge. Only plants which win Division Trophies may be considered for Best *Begonia* in Show.

Gonda Hartwell Challenge Trophy for Best Rex in Show.

Effie Chapman Challenge Cup for the Best Fibrous *Begonia* in the Show.

John R. Williams Challenge Cup for Best Rhizomatous in the Show.

Palos Verdes *Begonia* Farm Challenge Trophy for Best Tuberous in Grower Section.

HOW TO "UNWIND" FROM TENSION

by John W. Yochum, *Princeton, Indiana*

For me, the growing of *Begonias* is simply a means of unwinding from the daily tensions of life. After being cooped up in an office for the better part of nine hours each day, it is a genuine pleasure for me to spend an hour or two in my greenhouse; if for no other reason than to just stand and study and admire the wonderful creations of God and Mother Nature. I do not hesitate

to admit also that the growing of *Begonias*, especially from seed, offers a distinct challenge and from that challenge is the means from which I derive a lot of enjoyment.

I maintain a small loose leaf note book on each page of which is the name of every *Begonia* I have, whether it be a mature plant or just a seedling. For each *Begonia* I make every effort to note it's parentage, country of origin, type, seeding date, if grown from seed, a general description of what the leaves and plant in general should look like, unusual coloration of leaves or markings and cultural habits if available or picked up the hard way, from past experience. On winter evenings when I do not have to water or perform other greenhouse chores, I can spend an enjoyable hour or two thumbing through this little black book and studying the individual plants by comparing the data in the book with the actual plant. Fairly often I have both parents and it is interesting to observe the parental traits evident in the offspring.

(CONTINUED FROM PAGE 134)

this beautiful *Begonia* and it rooted in about three months and put up plantlets. She potted the plantlets into two and one-fourth inch plastic pots and put them in full greenhouse light and set them on the heat cable and they have grown and the largest one has been potted into a four inch plastic pot. They do not like to be dry so are watered often. She has not found it hard to grow and is propagating it now to learn more about it.

B. metachroa:

Another beautiful *Begonia* that Anita has been experimenting with as to its likes and dislikes. It is easiest propagated of any *Begonia* she has, but can't seem to please it after it becomes a mature plant but is still trying and hopes to learn more this summer.

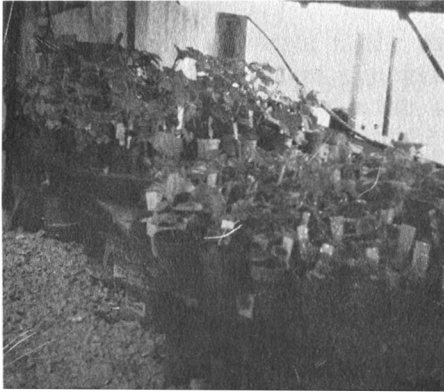
If you would like to join a flight write:

Mrs. Anita Sickmon
Round Robin Director
R. R. 2 Box 99
Cheney, Kansas 67025

My greenhouse is just a small one compared to most, since it is only 8' x 12' inside. It is completely covered with "corolux" fiber glass (clear) and built entirely of redwood. I heat with natural gas from a 50,000 btu heater and have sufficient fluorescent lighting so that there are no dark spots. The two main benches are 30" deep and run the entire 12' of the greenhouse on the north and south sides. There are also two lower benches of the same dimensions. For ease and con-

(CONTINUED)

venience of watering, I constructed six plywood "lazy susans", each 33"



Lazy Susans under bench

photo by Author

in diameter, mounted on three casters each and pivoted in the center. I simply load each "susan" with young potted plants and rotate same from the center aisle when watering etc. These lower benches are also lighted with fluorescent lights. When I built my greenhouse in 1965, I failed to make provisions for a roof ventilator which of course I found, in due time, to be highly desirable. To correct this condition, I installed a 17" x 17" ventilator in the south roof of the type often seen in mobile homes or campers and I raise and lower this ventilator with a gadget which is made in England and to my knowledge, must be imported from there. Opposed to the commonly used electrically operated thermostat operated ventilator device, this English version operates entirely independent of electricity, by means of like and unlike metals such as found in circuit breakers in your home to control electrical circuits. When the temperature in my greenhouse gable reaches 90 degrees, the two unlike metals come together activating a spring which in

turn opens the ventilator. As the greenhouse inside temperature cools, the metals separate, releasing the spring and the ventilator closes.

I have a very strong feeling that every serious ABS member should join one of the round robin flights. I was very fortunate a year ago when I joined the ABS, in making the acquaintance of our Round Robin Director, Anita Sickmon, whom I owe more than I can ever repay. Our acquaintance and correspondence stemmed from the exchange of tape recordings. Anita has been of tremendous help to me in sharing her knowledge of *Begonias*. I am a member of flight No. 30 (greenhouse growing) and flight No. 28 (seed growing). In flight No. 28 we are going to conduct a rather unique experiment later this year, in that each of the eight members will plant identical seed on the same day, in the same planting medium and compare results obtained. The results of this test should make interesting reading in "The Begonian" for other members.

I guess to be real honest about it, the challenge offered in growing from seed is the basis of my *Begonia* endeavors. I often wonder about the chemicals introduced into municipal water supplies and their effect on germination. Also how high can the bottom heat be without generating undesirable effects? Most of us use some sort of plastic to cover our seed trays during germination. Some plastics are more dense than others. Do the denser plastics hold undesirable gases in the seed tray which should escape for ultimate germination? After all, we are trying to duplicate tropical

(CONTINUED)

The Begonian

THE ANTIQUE BEGONIA

One day I went into an antique shop to browse among the many old articles. To my surprise I came upon a *Begonia*, the only plant in the house. There sat the poor dried out thing, mostly rhizome with a few leaves on the ends. It was in a beautiful old pot on a stand. Of course I asked the lady if it was for sale. It was not. It has been in her family for years. Then I offered to buy a piece of rhizome, that was not for sale either. After I told her that was one that I did not have, she relented and gave me a leaf. It was large, green, and maple-leaf in shape. On the underside it has red dots on the veins, red and white hairs on the stem. It is very beautiful. The leaf rooted in water and is now potted. New leaves are popping through.

Could someone identify this one for me?

Nora Shahan
Colfax, Wash. Rt. 1

Does anyone recognize this plant? Write direct or to the Editors.

QUESTIONS TO THE EDITOR

The winter up here in the cold northwest has been rather hard on my *Begonias*. Now it is spring and it is still cold. The dark dismal days have caused my plants to become leggy and tender even though I have a great deal of light from my windows. Needless to say I have lost several small plants that had not become established.

Will someone tell me how to raise the beautiful *B. masoniana* and *B. 'Fireflush'*? Should I give up completely on these? Why do the leaves curl up so and fall? I have started these twice with the same results. I found no trace of insects and they were treated the same as the others. They do not respond to the change of light and they are a big disappointment to me.

Nora Shahan
Colfax, Wash. Rt. 1

Has any other member living in the same general area had the same problem and has an answer? Write direct or to the Editors.

conditions in the growing of *Begonias* from seed and the people in that part of the world probably never heard of fluoride or other chemicals used in our city water supplies.

Perhaps you will derive some information helpful to you from my article. No matter where one lives they can enjoy growing and studying various methods used by others. After all, *Begonias* are most interesting and most beautiful.

ALFRED D. ROBINSON AWARD WINNERS

Plants receiving the Alfred D. Robinson Award are as follows:

Begonias:

'Orange Rubra'	'Verde Grande'
'Golden West'	'Kumwha'
'Glendale'	'Sophie Cecile'
'Ricky Minter'	'Purple Petticoats'
'Madam Queen'	'Lady Frances Jean'
'Virbob'	'Silver Jewel'

FIFTH ANNUAL EASTERN BEGONIA CONVENTION

sponsored by

THE KNICKERBOCKER BRANCH OF
THE AMERICAN BEGONIA SOCIETY, INC.

SEPTEMBER 17-19, 1970

ISLAND INN MOTOR HOTEL
OLD COUNTRY ROAD
WESTBURY, LONG ISLAND, NEW YORK

For complete information write to:

Mrs. J. W. Todd, Chairman
25 East End Avenue
New York, New York 10028

DATES AND PLACES OF BEGONIA SHOWS

The following is a partial list of Begonia Shows or Shows in which *Begonias* will be exhibited. If you are vacationing in these areas be sure to take in the shows as the exhibitors are understandably proud of their plants.

Sunday - July 12th

The Glendale Branch and the Glendale Mountain View Fuchsia Society combined non-competitive Show, Glendale Federal Savings and Loan Building. 2 to 5 p.m. *Begonias*, Fuchsias and Shade Plants.

Sunday - July 12th

Long Beach Parent Chapter Branch Begonia Show, 5535 Stearns Street, Long Beach, California

July 18th and 19th

Sacramento Branch Begonia and Shade Plant Show. Garden and Arts Center, 3330 McKinley Blvd., Sacramento, Calif. 18th - 2 to 8 p.m. 19th - 10 a.m. to 6 p.m.

July 25th and 26th

Seattle Branch Seafair Begonia, Fuchsia and Shade Plant Show. "Shade Gardens of Yesteryear". 25th - 2 to 9 p.m. 26th - 10 a.m. to 7 p.m. Loyal Heights Recreation Center, 21st and 77th Streets, Seattle, Washington.

August 15th and 16th

A.B.S. Annual Convention and Show, "Salude Las Flores"; County Fair Grounds, Ventura, California. 15th - 1 p.m. to 6 p.m. 16th - 10 a.m. to 5 p.m.

San Francisco County Fair - Flower Show San Francisco Branch, "100 YEARS OF BEAUTY", **August 27th through August 30th**, Hall of Flowers, 9th Avenue and Lincoln Way. Preview August 27th, 6 to 8 p.m., refreshments, \$2.50 donation.

August 29th and 30th

Rhode Island Branch in conjunction with The University of Rhode Island Annual Begonia and Plant Show Photographic Display. Demonstration of *Begonias* in a garden plus exhibit of propagation of *Begonias*. 29th - 1 to 5 p.m. 30th - 9 a.m. to 5 p.m.

B. 'AQUA MARINE' OR B. 'AQUAMARINE'?

The plant in the picture on the cover of the May issue was acquired from the hybridizer, Mrs. Suzie Zug, many years ago before it was widely distributed. The label in Mrs. Zug's handwriting was 'B. Aqua Marine'. Did the two words become one somewhere in the process of testing, distribution and registering? A notable error was made in the case of B. 'Kumwha'. The "h" is omitted in the official registered list! The label on the plant I purchased was B. 'Kumwha'.

Are we always careful to give a particular plant its full name? Notably, B. 'Mrs. W. A. Wallow' instead of B. 'Mrs. Wallow'. Another instance is B. 'Mrs. Fred T. Scripps' instead of B. 'Mrs. Scripps'.

People become accustomed to acquiring "nicknames" but great care should be taken to give a *Begonia* its full name, avoiding later confusion. Ask yourself the question "Do I always correctly spell and clearly write the label on a plant I give to a friend or donate to the plant table at my Branch meetings?" In checking back through the pages of "The Begonian", *Begonia* names often appear in a shortened form. Are we always sure that others will know which *Begonia* we are talking about? Until this confusion is clarified, the plant in the picture must be B. 'Aquamarine'.

The Editors

DEADLINE for all material submitted for "The Begonian" is the 1st of the month preceding the next months issue.

Condensed Minutes of the National Board of the American Begonia Society April 27, 1970

The meeting was called to order in the Southgate City Auditorium at 8:00 p.m., President Vera Naumann presiding. Fourteen officers and 10 Branch Directors answered roll call.

After opening ceremonies, minutes of the March meeting were approved as corrected.

The Treasurer reported \$909.03 balance in general fund.

The Advertising Managers report read, receipts \$69.95, unpaid accounts \$87.50

Business Manager reported Insurance Premium due on A.B.S. Library amounting to \$30.00 for 3 years for \$2,100.00, payment of premium authorized.

The Membership Secretary reported 44 new and 128 renewing members. Total membership 2,113, Begonians disbursed 2,390, funds deposited \$728.49.

The Librarian reported that the book "Platy-ceriums" by Wendy Franks available.

The Research Directors report read, five Branches contributed to the Research Fund. Committee member, Thelma O'Reilly, requested reports of adventitious growth on Begonias be sent to Research Dept.

The Judges Course Director reported receipts of \$23.25.

Round Robins Director reported much interest and 16 new requests.

President Naumann read Article 7, section 2 of the Constitution and By Laws which states, "Additional nominations may be made by a petition signed by at least 14 members of the Society, if made and delivered to the Secretary at least 80 days before the annual meeting".

It was announced with regret, that the San Diego Branch had disbanded. A check in the amount of \$22.99 was forwarded and designated for the purchase of a Perpetual Trophy to honor Mrs. Helen Bailey, founder of the San Diego Branch.

It was announced that Mr. Harry M. Butterfield, friend and mentor of the A.B.S., had passed away at the age of 82.

A motion was made and carried that the Ballots be printed and inserted in The Begonian. Attention was called to the magazine "Under Glass" Motion carried to have an ad placed in the magazine re the A.B.S.

After the Branch reports, the meeting adjourned at 10:00 p.m.

Respectfully Submitted
Irene Grannell, Secy.

Gloxinias—African Violets—Begonias
Varieties which thrive under
fluorescent light
New Catalog—25c

KARTUZ GREENHOUSES
Dept. B—92 Chestnut Street
Wilmington, Massachusetts 01887



**A. B. S.
LIBRARY
BOOKSTORE**

The following selection of books are
FOR SALE

- * Gesneriads And How To Grow Them. . . \$7.95
by Peggy Shultz
- * Rex Begonias As House Plants \$1.00
by Virginia Withee
- * All About Begonias \$5.95
by Bernice Brilmayer
- * So Say The Experts \$2.00
by Ruth Pease
- Classification Guide Compiled by. . . \$1.25
the Westchester Branch, A.B.S.
- * Ferns We Grow by Sylvia \$3.85
Leatherman and Dorothy Behrends
- The Begonian—Complete reprints . . \$6.00
of the four years 1934 to 1937
- Platycerium Fern Facts \$4.95
by Wendy Franks
- The Begonian— 1968-1960 25c per issue
1959-1950 40c per issue
1949-1939 50c per issue
- Please include 50 cents to cover postage and
handling.
- * Begonia Binders \$1.50
A.B.S. on the cover.
- * Calif. residents, add 5% tax on these items.

Send your orders to:
MRS. LYDIA AUSTIN
15329 East Wood Avenue
Lawndale, California 90260

*Palos
Verdes*

**Begonia
Farm**

4111 - 242nd St., WALTERIA, Calif. 90505

TUBEROUS BEGONIAS

COMPLETE SELECTION OF BEGONIAS
AND SHADE PLANTS

FUCHSIAS—CAMELLIAS—FERNS

OPEN DAILY

Complete Nursery & Garden Supply Shop
1 1/2 Miles E. of Redondo Beach
Hi-Way 101

ERRATA

- Correct *B. pustulata*
page 51, March 1970
- Correct Pests
page 85, March 1970
- Correct Buxton
page 88, April 1970



**AMERICAN BEGONIA
SOCIETY BOOKLETS**

- Point Scoring System for Judging
Begonias \$1.25
- A Suggested Guide to Classification
of Begonias for Show Purposes . . . \$1.50
- ORDER FROM: Ruth Pease
8101 Vicksburg Ave.
Los Angeles, Calif. 90045

**REX BEGONIAS, AFRICAN VIOLETS,
miscellaneous HOUSE PLANTS**

4 separate lists, 10c

DEE'S GARDENS

E. 3803 19th Avenue, Spokane, Wash. 99203

**EXOTIC FERNS—BEGONIAS
CHRISTMAS & EASTER CACTUS
TALNADGE'S FERN GARDENS**

Section B, 354 "G" Street
Chula Vista, Calif. 92010

We ship anywhere in the U.S. except Florida
Catalog 25c

BEGONIAS GESNERIADS

Many varieties of *Begonias* listed.
Rex, Rhizomatous, Cane, and Rare,
including *B. Versicolor*
Price list — 10c

MRS. ROSETTA WHITE

425 E. Second Street, Newton, Kansas 67114

**A.B.S. CONVENTION & SHOW
AUGUST 15-16, Ventura, California**

MRS. BERT ROUTH

Louisburg, Missouri 65685

Postage will be paid on orders over \$12.00. For those under \$12.00, please add \$1.25 on all orders. For special delivery, please add an additional 65c and plants will be sent insured, special handling parcel post.

Order Begonias Directly From This Ad

RHIZOMATOUS BEGONIAS \$1.00 each — Leaves 35c each

'Alfreana', 'Erythrophylla' (Beefsteak), 'Black Jewell', 'Brocade', 'Alice-Mac', 'Bow-Nigra', 'Bunchii', 'Carol Star', 'Cleopatra', 'Chantilly Lace', 'Decker's Select', 'Enchantment', 'Gi-Gi', 'Joe Hayden', 'Laguna', 'Merry Merry', 'Norah Bedson', 'Pebble Lane', 'Persian Brocade', 'Silver Star', 'Spaulding', 'Zadia', 'Zee Bowman', *masoniana* (Iron Cross), 'Aqua Marine', 'Catalina', 'Isley', 'Pearli'

RHIZOMATOUS BEGONIAS \$1.25 each

'Angie', 'Leo Rowan', 'Leslie Lynn', 'Missouri', 'Ricky Minter', *heracleifolia nigricans*, 'Randy', 'Roberta', 'Ricinifolia', 'Regency', 'Wilda', 'Vernon', 'Gay Star', 'Raspberry Parfait'.

FIBROUS BEGONIAS \$1.00 each

'Annabelle', 'Argenteo-Guttata', 'Bleeding Heart', 'Peach Leaf', *echinosepala*, 'Green Medora', 'Helen', 'Helena', *incarnata*, 'Jean Pernet', 'Medora', 'Spring Song', 'Sir Arthur', *acida*, 'Corbeille de Feu', 'Digswelliana', 'Thurstonii', 'Blue Lake', 'Gray Feather'

FIBROUS BEGONIAS \$1.25 each

'Otto Hacker', 'Elaine', 'Frances Lyons', 'Pinafore', 'Robinson's Peach', *coccinea rosea*, 'President Carnot', 'Sophie Cecile', 'Ross Swisher', 'John R.', 'Alasco', 'Nora Hanson', 'Tingley Mallet', 'Tempelina'

HAIRY FIBROUS BEGONIAS \$1.25 each

'Alto Scharff', 'Chocolate Soldier', 'Conbow', 'Credneri', 'Campenes', 'Dwarf Houghtonii', *Hugellii*, 'Margarita', 'Nelly Bly', *metallica*, *prunifolia*, 'Irene', 'Raphael'

REX BEGONIAS \$1.00 each — Leaves 35c each

'Amy', 'American Beauty', 'Black King', 'Bertha McGregor', 'Blushing Ole', 'Cardoza Gardens', 'Crimson Glory', 'Cora Miller', 'Curly Stardust', 'Dottie', 'Evergreen', 'Fiesta', 'Fairy', 'Forty-Niner', 'Glory of St. Albans', 'Green Countess', 'Green Gold', 'Helen Lewis', 'Helen Teupel', 'Mikado', 'Jack Frost', 'Lillian', 'Les Matheson', 'Lucy Closson', 'Merry Christmas', 'Mountain Haze', 'Old Smokey', 'Peace', 'Shirt Sleeves', 'Sue Zug', 'Silver Lake', 'Sandy', 'Winter Gardens', 'White Lace', 'Venetian Red', 'Red Berry', 'Sir Roy Yewell', 'New Blue Bell', 'Purple Petticoat', 'Prince Charming'

Send 10c for a complete list of plants we grow.

BRANCH DIRECTORY

VISITORS ARE ALWAYS WELCOME AT THESE MEETINGS

BRITISH BRANCH

F. J. Bedson, Secy., Kent, England

BUXTON, BESSIE RAYMOND BRANCH

3rd Saturday, Homes of Members
Mrs. Herbert Hurley, Secy.
11 Woodland Rd., Lexington, Mass. 02173

CONNECTICUT BRANCH

4th Sunday of each month
Nellie Radtke, Secy.
24 Cooper St.,
Norwich, Conn. 06360

DALLAS COUNTY, TEXAS BRANCH

3rd Monday, 10 a.m., Members' Homes
Mrs. George W. Hopkins, Secy.
1619 S. Beckley Ave., Dallas, Texas 75224

EAST BAY BRANCH

2nd Thursday, 7:45 p.m., Willard School
Telegraph at Stuart, Berkeley, Calif.
Charles Badcock, Secy.
2325 Esmond, Richmond, Calif. 94804

EASTSIDE BRANCH

4th Wednesday, 7:30 p.m.
Natural Gas Co. Bldg.
Crossroads Shopping Center, Bellevue, Wash.
Edith Lange, Secy.
9905 Belfair Lane, Bellevue, Wash. 98004

EL MONTE COMMUNITY BRANCH

3rd Friday, Members' Homes
Mrs. Gladys Mattuket, Secy.
1801 Azalea Drive, Alhambra, Calif. 91801

FOOTHILL BRANCH

3rd Thursday, 8:00 p.m.
First Methodist Church, Marshall Hall
3205 D Street, La Verne, Calif.
Mrs. Madge Borden, Secy.
602 North Angelino, Azusa, Calif. 91740

FORT, ELSA BRANCH

1st Saturday, 1:00 p.m.
Miss Lola Price, Secy.
628 Beach Ave., Laurel Springs, N.J. 08044

GLENDALE BRANCH

2nd Tuesday, 8:00 p.m.
Glendale Federal Savings, 401 N. Brand
Mrs. Frances Perkins, Secy.
3712 Revere Ave., Los Angeles, Calif. 90039

GREATER BATON ROUGE BRANCH

Mrs. Charles H. Smith, Secy.
4177 Flannery Rd., Baton Rouge, La. 70814

HOUSTON TEXAS BRANCH

2nd Friday, 10:00 a.m.
Garden Center, 1500 Herman Drive
Mrs. E. H. Claggett, Secy.
4415 Austin
Houston, Texas 77004

INGLEWOOD BRANCH

2nd Wednesday, 7:30 p.m.
Western Federal Savings Bldg.
355 E. Manchester Blvd., Inglewood, Calif.
Lola Somes, Secy.
4849 W. 130th St., Hawthorne, Calif. 90250

KNICKERBOCKER BRANCH

3rd Tuesday, 7:30 p.m.
McAlpin Hotel, New York City
Mrs. Philip Sarna, Secy.
37 East 30th St., New York 10016

LONG BEACH PARENT CHAPTER

2nd Sunday, 1:30 p.m.
Glendale Fed. Sav. & Loan Bldg.
5535 Stearns St. Cor. Bellflower, Long Beach, Calif.
Mrs. Bernita McClanahan, Secy.
1020 Poppy Ave., Compton, Calif. 90221

LOUISIANA CAPITAL BRANCH

1st Friday, Sear's Garden Center
6201 Florida St., Baton Rouge
Mrs. Wilma Simpson, Secy.
3105 Belmont St., Baton Rouge, La. 70808

MESQUITE BRANCH

Mrs. Billie Lyles, Secy.
928 Calle Reale, Mesquite, Texas 95149

MIAMI BRANCH

4th Tuesday, 8:00 p.m.
Simpson Memorial Garden Center
Miss Rosamond Meriweather, Secy.
1552 Plascencia Ave., Coral Gables, Fla. 33134

MISSOURI BRANCH

3rd Tuesday, 11 a.m.
Members' Homes
Kansas City, Mo.
Mrs. Lynne K. Wood, Secy.
626 W. Charles, Independence, Missouri 64055

NORTH LONG BEACH BRANCH

3rd Tuesday, 7:30 p.m.
American Legion Post No. 560
East 59th and Orange, Long Beach
Ruth Hurd, Secy.
2942 Sawyer St., Long Beach, Calif. 90805

ORANGE COUNTY BRANCH

2nd Thursday, 7:30 p.m.
Garden Grove Grange Hall, Century and Taft Sts.
Garden Grove, Calif.
Mrs. O. L. Simmons, Secy.
2611 Westhaven Drive
Anaheim, California 92804

PHILOBEGONIA BRANCH

2nd Friday, Members' Homes
Mrs. Anne Stiles, Secy.
East Delaware Trail, R. D. No. 2, Medford, N.J. 08055

PORTLAND BRANCH

Mrs. Lavene Jenkins, Secy.
9920 S. W. 53rd Ave., Portland, Oregon 97219

REDONDO AREA BRANCH

4th Friday, 7:30 p.m.
R. H. Dana School Cafetorium
135th St. and Aviation Blvd., Hawthorne, Calif.
Mrs. Dora Aaron, Secy.
4820 W. 135th, Hawthorne, Calif. 90250

RHODE ISLAND BRANCH

1st Saturday, Homes of Members
Mrs. Robert Northup, Secy.
555 Kingstown Road, Peace Dale, R.I. 02883

RIVERSIDE BRANCH

2nd Wednesday, 6:30 p.m.
Dales Recreation Center
3936 Chestnut St., Riverside, Calif.
Mrs. Tim Smith, Secy.
8631 Clearview Pl., Riverside, Calif. 92509

ROBINSON, ALFRED D. BRANCH

3rd Friday, 12 noon, Homes of Members
Constance D. Bower, Corr. Secy.
1609 W. Lewis St., San Diego, Calif. 92103

SACRAMENTO BRANCH

3rd Tuesday, 8:00 p.m., Garden Center
3300 McKinley Blvd., Sacramento, Calif.
Mrs. Dora Hale, Secy.
9770 Carmencito Ave., Sacramento, Calif. 95823

SAVE AUGUST 15-16 FOR THE
CONVENTION & SHOW

CALENDAR

SAN FRANCISCO BRANCH

1st Wednesday, 8:00 p.m.
Garden Center, Golden Gate Park
9th Ave. and Lincoln Way
Mr. Allen Sweet, Secy.
139 Beverly St., San Francisco, Calif. 94132

SAN GABRIEL VALLEY BRANCH

2nd Friday, 8:00 p.m.
Los Angeles State and County Arboretum
501 N. Baldwin Ave., Arcadia, Calif.
Mrs. Virginia Barnett, Secy.
1213 Mullender Ave., West Covina, Calif. 91790

SAN MIGUEL BRANCH

2nd Wednesday, Porter Hall 7:30 p.m.
University & La Mesa Blvd., La Mesa
Mrs. H. W. Condon, Secy.
9219 Stoyer Dr., Santee, Calif. 92071

SANTA BARBARA BRANCH

2nd Thursday, 7:30 p.m.
Santa Barbara Museum of Natural History
2559 Puesta Del Sol
Mrs. Helen Yost, Secy.
888 La Milpita Rd., Santa Barbara, Calif. 93105

SEATTLE BRANCH

3rd Tuesday, 7:45 p.m., Loyal Heights Field House
21st Ave., N.W. and N.W. 77th St.
Virginia Level, Secy.
13770 1st Avenue N.E., Seattle, Wash. 98125

SHEPHERD, THEODOSIA BURR BRANCH

1st Tuesday, 7:30 p.m.
Y.M.C.A. Bldg., 5200 Telegraph Rd., Ventura, Calif.
David Dichter, Secy.
3280 San Luis St., Ventura, California 93003

SMOKY VALLEY BRANCH

4th Thursday, 7:30 p.m., Members' Homes
Miss Verna Fowler, Pres.
920 Sheridan, Salina, Kansas 67401

SOUTH CAROLINA BRANCH

Mrs. Leonard Thomas
333 Harrow Dr., Columbia, S. C. 292910

SOUTH SEATTLE BRANCH

4th Tuesday, 7:30 p.m., Wm. Moshier Field House
430 So. 156th Burien
Sally Harding, Secy.
11632 1st Ave. S., Seattle, Wash. 98168

TARRANT COUNTY BRANCH

2nd Monday, 10:00 a.m., Members' Homes
Mrs. R. M. Benson, Secy.
Rt. 2 Box 155, Dickinson, Texas 77539

TEXAS STATE BRANCH

4th Thursday, Sabine National Bank Bldg.
Port Arthur, Texas
Mrs. R. J. Wilson, Secy.
4620 Evergreen St., Port Arthur, Texas 77640

TEXASTAR BRANCH

3rd Thursday, 10 a.m., Garden Center
1500 Herman Dr., Houston, Texas
Mrs. V. O. Harman, Secy.
306 Cody, Houston, Texas 77009

WESTCHESTER BRANCH

1st Thursday, 7:30 p.m., Westchester Women's Club
8020 Alverstone St., Los Angeles, Calif.
Barbara Mack, Secy.
424 Oregon St., El Segundo, Calif. 90245

WESTERN PENNSYLVANIA BRANCH

2nd Wednesday, 11:00 a.m. every other month
Pittsburg Garden Center, 1059 Shady Ave., Pittsburg, Pa.
Mrs. Irene Fediaczko, Secy.
125 Arlington Ave., Butler, Pa. 16001

WHITTIER BRANCH

1st Thursday, 7:30 p.m.
Palm Park Community Center
5703 S. Palm Ave., Whittier
Phyllis Ferguson, Secy.
10722 Wiatt Way, La Habra, Calif. 90631

WILLIAM PENN BRANCH

4th Tuesday, Noon, Homes of Members
Mrs. Murdock Davis, Secy.
256 Broughton Lane, Villanova, Pa. 19085

June 4 — Westchester Branch, 6:30 p.m.
Pot Luck. Speaker, Dorothy Behrends:
"Add Zing to the Shade Garden".

June 9 — Glendale Branch, 8:00 p.m.
Speaker, Jean Kerlin.

June 11 — Orange County Branch, 7:30
p.m. Mr. E. O. Sherer will talk about
Gesneriads.

June 14 — Long Beach Parent Chapter
1:30 p.m. Speaker, Malcom Rich "Any
Old Neophyte".

June 16 — North Long Beach Branch
6:30 p.m. Pot Luck. Speaker, Mrs. Ruth
Pease — "Hybrid Begonias".

June 16 — Sacramento Branch, 8:00 p.m.
Speaker, Elmer Thomas — "The Joy of
Growing Pelargoniums and Geraniums".

June 16 — Seattle Branch, 7:00 p.m.
Regular meeting, Loyal Heights, Recrea-
tion Center, Seattle, Wash.

June 22 — ABS Board, 8:00 p.m. South
Gate City Auditorium, 4900 Southern
Ave., South Gate, Calif. Meetings are
always open to members.

July 2 — Westchester Branch, 7:30 p.m.
Speaker, Jean Kerlin — "What's New in
Fibrous Begonias".



The revised Member-
ship Roster is off the
press. Order your copy
from the Membership
Secretary. \$1.25

Pearl Benell

10331 S. Colima Rd., Whittier, Calif. 90604

"THE BEGONIAN" ADVERTISING RATES

	Once	Monthly
Full Page	\$30.00	\$25.00
Half Page	18.50	15.00
Quarter Page	10.00	8.50
Per Inch	3.00	2.50

SECOND CLASS MAIL

American Begonia Society
10331 South Colima Road
Whittier, California 90604

24 Different *Begonia* leaves and cuttings
\$5.50 AIR MAIL post paid

Seeds: Coccinea type, Orange Rubra;
Nelumbifolia (Pond Lily) \$1.00 ea. pk.

ALICE E. MUSY
BOX 7, VALRICO, FLA. 33594
FREE PRICE LIST

Bronze leaf Double Begonias: Lady Frances
(pink), Carol (red), Carmen (rose)

6 for \$5 postpaid—3 for \$2.75 postpaid
No less than 3 shipped.

Packed to arrive in good condition

WALT'S NURSERY
549 Resor Avenue, Harahan, La 70123

BEGONIAS, GERANIUMS, FERNS
RHAPSODIE AFRICAN VIOLETS

Catalog 10c

FLORA GREENHOUSES
Box 1191, Burlingame, California 94010

New Begonia Price List Available
REX HYBRID BEGONIA SEED

\$1.00 per packet

RUDOLF ZIESENHENNE

1130 North Milpas Street
SANTA BARBARA, CALIFORNIA 93103

SPOONIT
FLOWER FOOD

Send Post Card for Information and Sample

PLANTSMITH

Box 818 Palo Alto, Calif. 94302

LOWE'S NURSERY

Specializing in *Rex Begonias*: 110 varieties
listed. Rhizomatous, Angel Wing and other
odd and rare *Begonias*.

BROMELIADS and ORCHIDS
Wholesale and Retail — Price List 10c

23045 S. W. 123 Rd., Goulds, Florida 33170

**BEGONIAS — AFRICAN VIOLETS
EPISCIAS**

Send for FREE price list

WILSON'S GREENHOUSE
OZARK, MISSOURI 65721

ANTONELLI BROTHERS

2545 Capitola Road

SANTA CRUZ, CALIFORNIA 95060

36-page color catalog 25 cents

"Schultz-Instant"
LIQUID PLANT FOOD 10-15-10
7 DROPS to a quart of water
"starts and feeds" all plants
Available at your store
or send \$1.25 for 2 bottles, prepaid to
SCHULTZ COMPANY
11730 NORTHLINE, ST. LOUIS, MO. 63042
Send for our Fund-Raising Offer



GREEN HILLS NURSERY

Exotic & Hardy Ferns

Open Saturdays and Sundays
10 a.m. to 4 p.m. or by appointment

2131 Vallejo Street St. Helena, Calif. 94574
Mrs. E. Bolduc

BEGONIAS, GERANIUMS, EXOTICS
FERNS, OXALIS, CACTI, HERBS

New 75th anniversary catalog, with more color—50c

LOGEE'S GREENHOUSES

(Est. 1892)

55 North Street, Danielson, Connecticut 06239

GRO-LUX LAMPS—BLACK LIGHT

All sizes of lamps and fixtures
for residence or business.

FLUORESCENT TUBE SERVICE

13107 S. Broadway, Los Angeles, Calif. 90061

Phone (213) 321-6900